

## #UP1005

### Oversized blazer

This summer blazer is the perfect addition to your wardrobe. Its oversized fit is crafted with welt pockets, a double breast closure, and a short sleeve which is sure to make a statement. Create your own custom blazer now!

**1 cm seam allowance included!**

Front



Back



#### Material

- 225 x 150 cm suiting fabric (twill, gabardine, crêpe ...) or linen
- 90 x 150 cm fusible interfacing
- 15 x 90 cm broadcloth or light cotton poplin
- Universal needle
- All-purpose thread
- 2x buttons (2 cm wide)
- OPTIONAL : bias tape and shoulder pads

#### Print & Assemble

- First, be sure to use ACROBAT READER to open your PDF sewing patterns. It's free!
- Then, open your file and click on the LAYERS icon (left side of the screen) and uncheck all the sizes you won't need.
- Now, click on the PRINT icon at the top of the screen. The print settings will appear, so verify that the ACTUAL SIZE option is checked. Click on the PRINT button!
- A 5 x 5 cm (and 2 x 2") control square is provided to ensure that your pattern is true to size.
- To ASSEMBLE, cut the sheets at the bottom and right margins, as indicated. Each sheet is labelled with a letter and a number (A1, B2...), so tape them together in numerical and alphabetical order. The sheets on one row should have the same letter, and the ones on the same column should have the same number.

#### Sizing Guide

	XXS	XS	S	M	L	XL	XXL
<b>Bust</b>	85 cm	89 cm	93 cm	99 cm	105 cm	113 cm	121 cm
<b>Waist</b>	64 cm	68 cm	72 cm	78 cm	84 cm	92 cm	100 cm
<b>Hips</b>	92 cm	96 cm	100 cm	106 cm	112 cm	120 cm	128 cm

#### Garment measurements

- **Length:** approx. 79 cm

This pattern is drafted according to a standard height of **1.64 m**.

## #UP1005

## Oversized blazer

---

### Pattern Pieces

- Breast pkt, 1x fabric 1x interfacing
- Front, 2x fabric
- Welt, 4x fabric 4x interfacing
- Flap, 4x fabric 4x interfacing
- Top pocket lining, 2x lining
- Lower pocket lining, 2x lining
- Back, 2x fabric
- Collar, 2x fabric 1x interfacing
- Frt facing, 2x fabric 2x interfacing
- Bk facing, 1x fabric 1x interfacing
- Sleeve, 2x fabric

### Sewing Assembly

Unless otherwise specified, sew using a **1 cm** wide seam allowance.

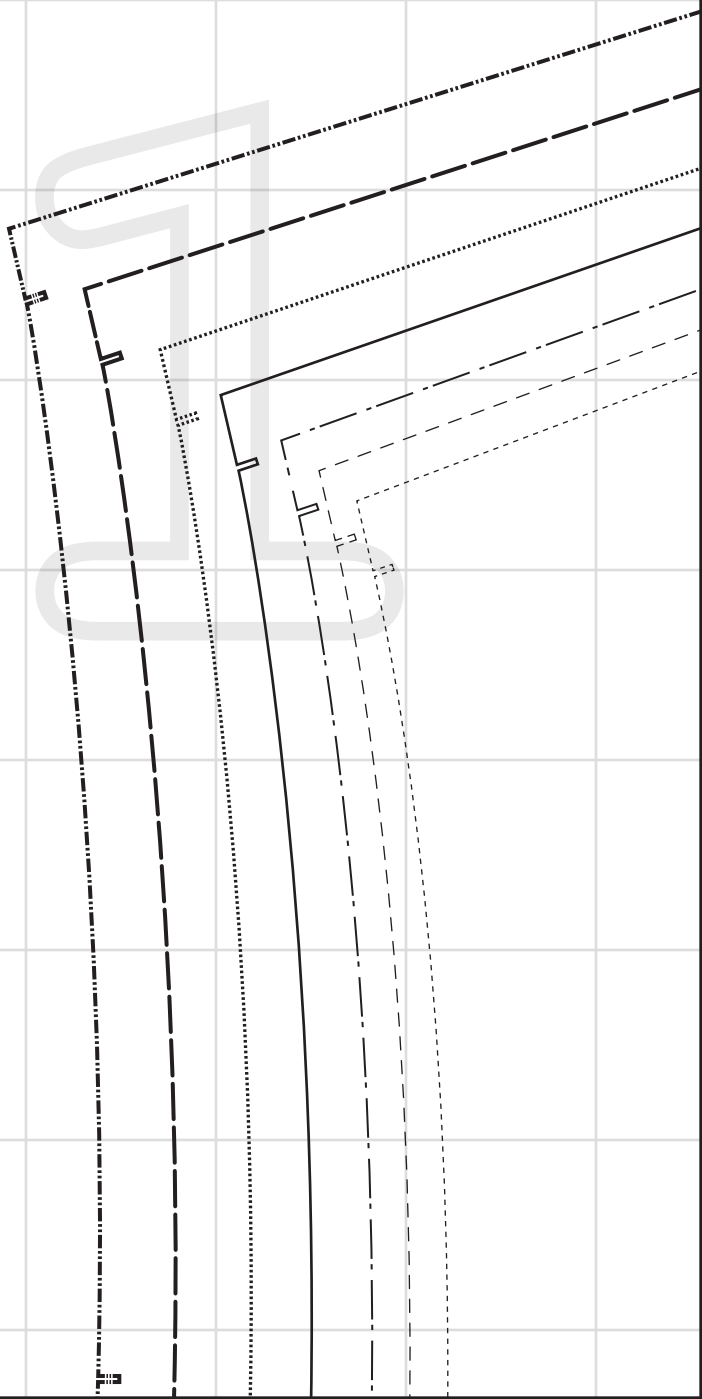
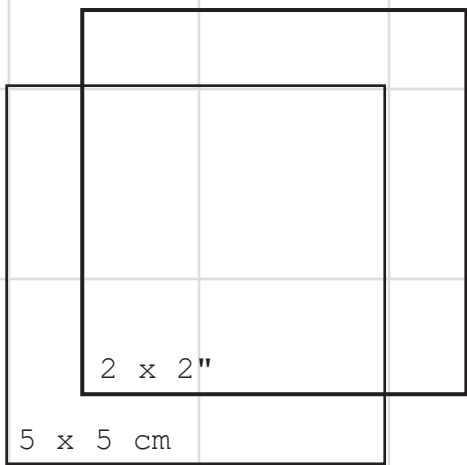
1. Fuse the facings, welt, breast pocket, one collar piece, and flaps.
2. Make the mock breast pocket and sew it to the left-hand side front (see markings on the pattern).
3. Sew the welt pockets with the flaps on the front panels (see markings on the pattern).
4. Sew the center back. OPTIONAL: finish the raw edges with bias tape.
5. Sew the side and shoulder seams.
6. Make the collar and attach it to the neckline (see notches).
7. Sew the facings at the shoulders. OPTIONAL: finish the outer edges of the facing with bias tape.
8. Sew the facing to the garment.
9. Turn the facing inside. Press the seamed edges.
10. Baste the facings to the garment at the armholes.
11. Sew the underarm seams on each sleeve.
12. Ease the cap of the sleeves and attach the sleeves to the garment, catching also the facing.
13. Hem the bottom of the garment and the bottom of the sleeves (turn twice, first at 1 cm then 3 cm).
14. Add the buttons and buttonholes (see placement on the front pattern). Right-hand panel should overlap the left-hand one.
15. If you wish to add shoulder pads, sew them now.



Share a photo of you  
wearing proudly  
your new oversized blazer  
with

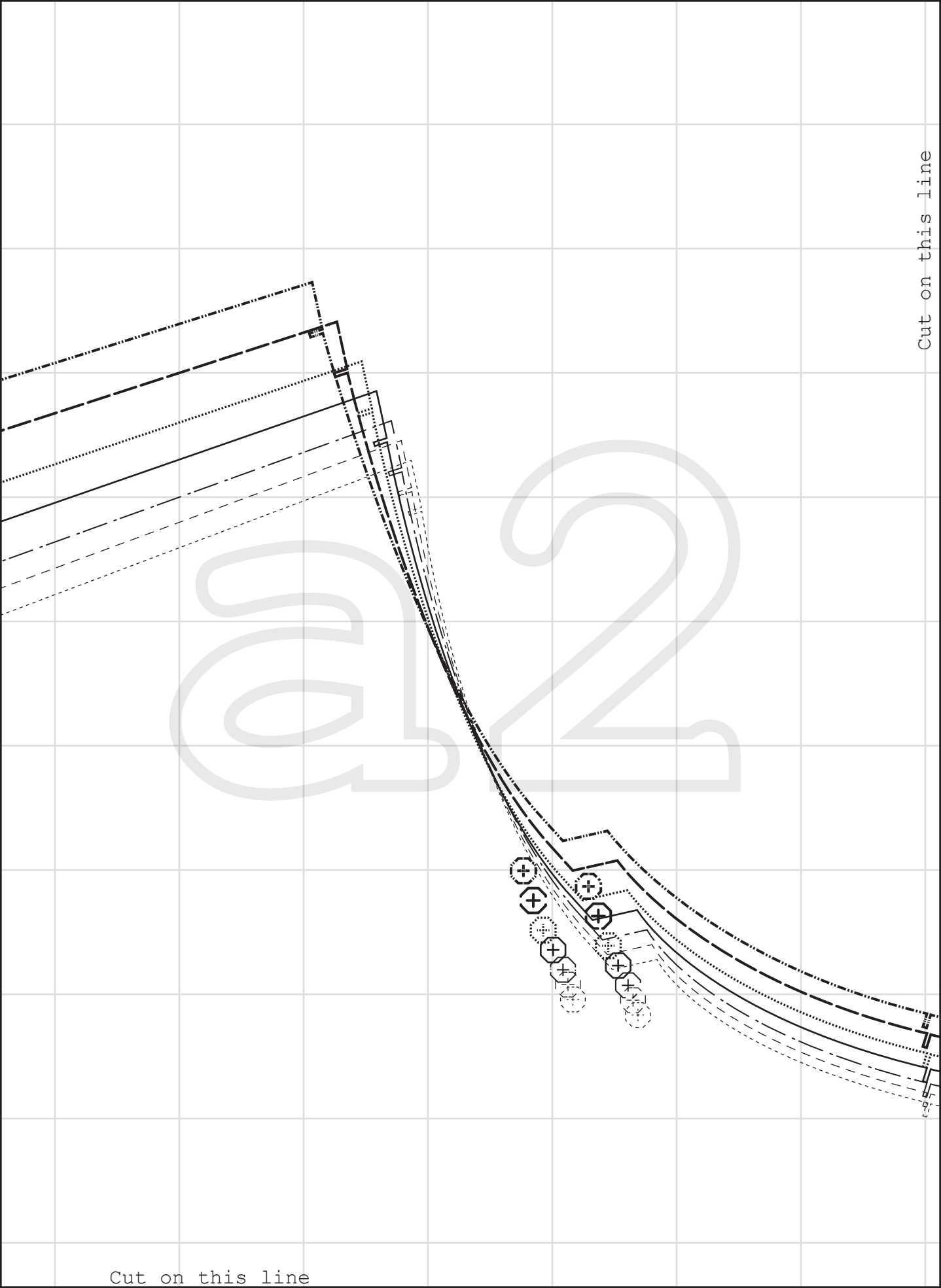
**#unfetteredpatterns!**





Cut on this line

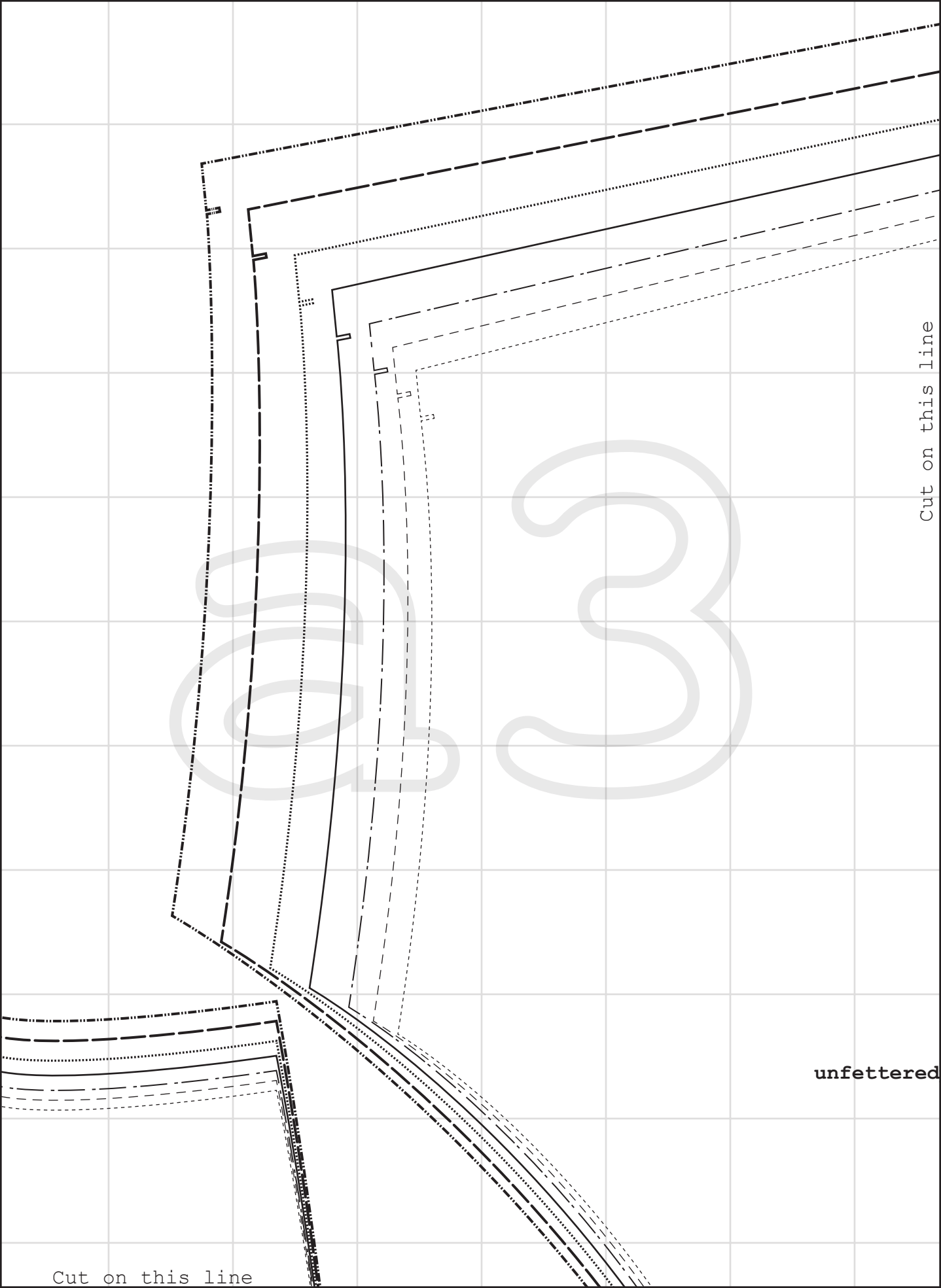
Cut on this line



Cut on this line

Cut on this line

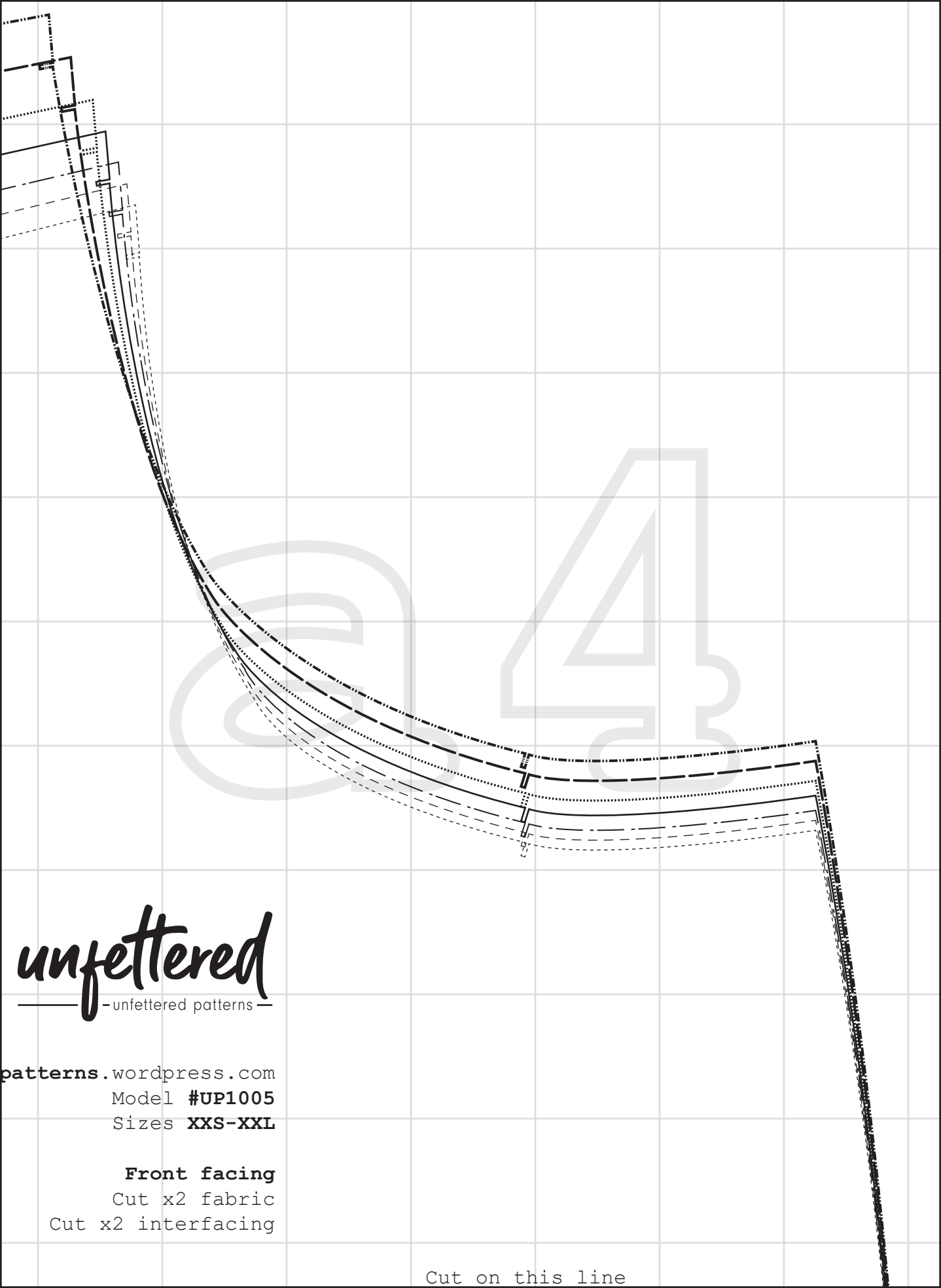




Cut on this line

Cut on this line

unfettered



**unfettered**  
— unfettered patterns —

patterns.wordpress.com

Model **#UP1005**

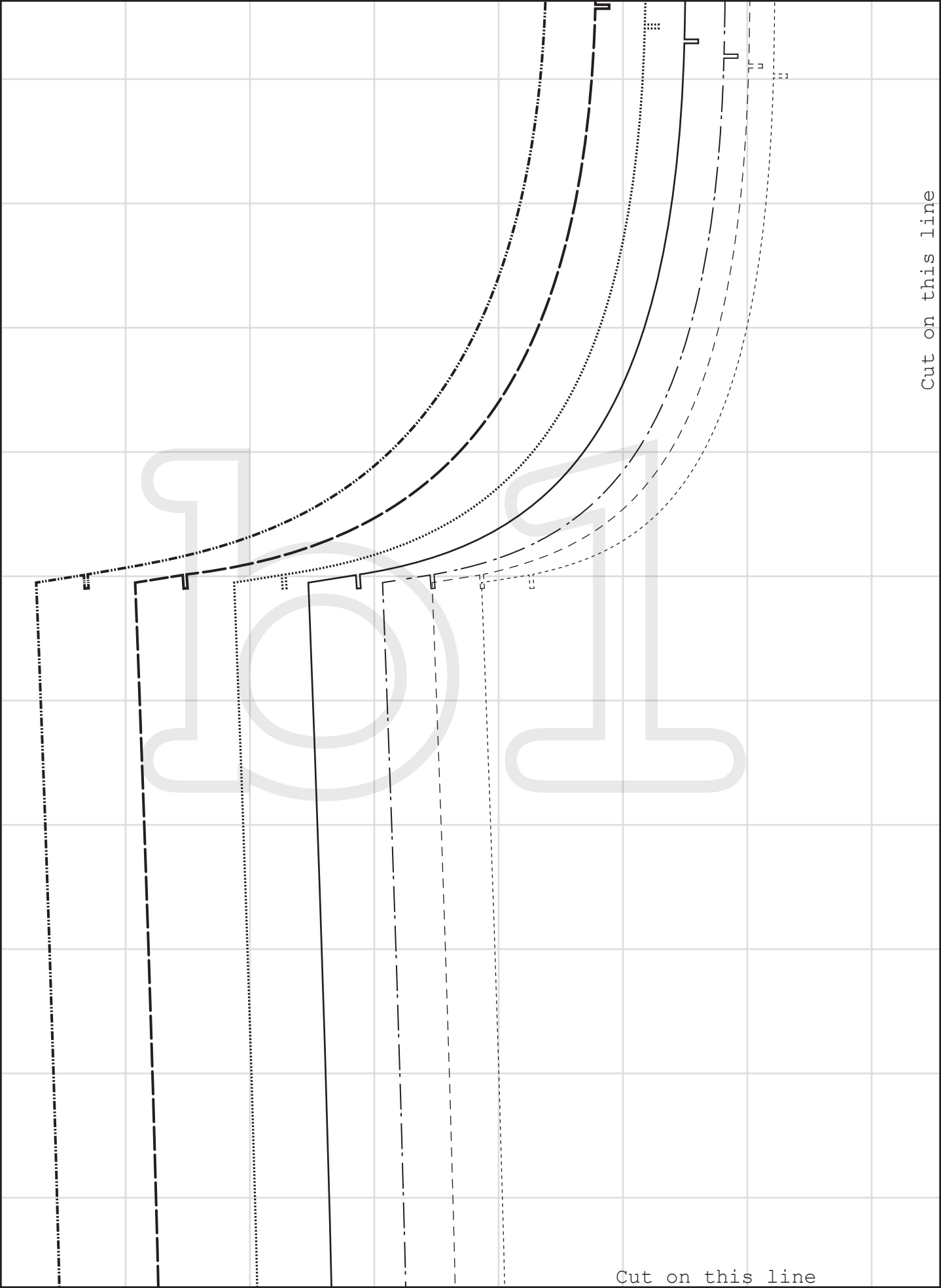
Sizes **XXS-XXL**

**Front facing**

Cut x2 fabric

Cut x2 interfacing

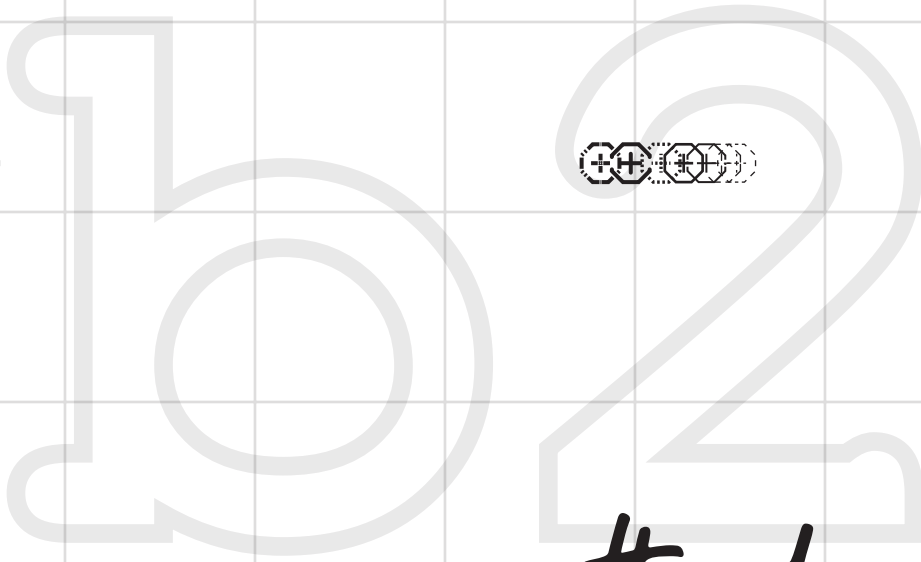
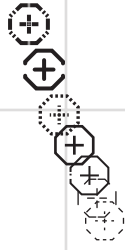
Cut on this line



Cut on this line

Cut on this line

Cut on this line



*unfettered*  
— unfettered patterns —

**unfetteredpatterns.wordpress.com**

Model **#UP1005**

Sizes **XXS-XXL**

**Front**

Cut x2 fabric

Cut on this line

103

Cut on this line

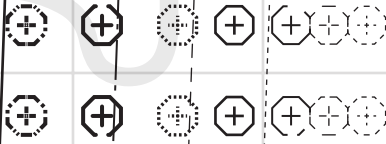
Cut on this line



Grainline

Cut on this line

Cut on this line



SIZE

XXL

XL

L

M

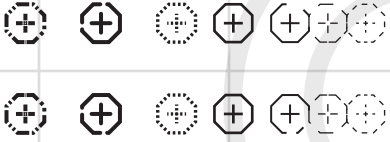
S

XS

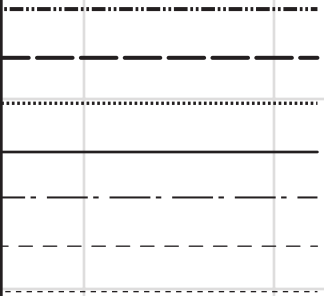
XXS

Cut on this line

X



KEY





Cut on this line



unfetteredpatterns.wordpress.com

Model #UP1005

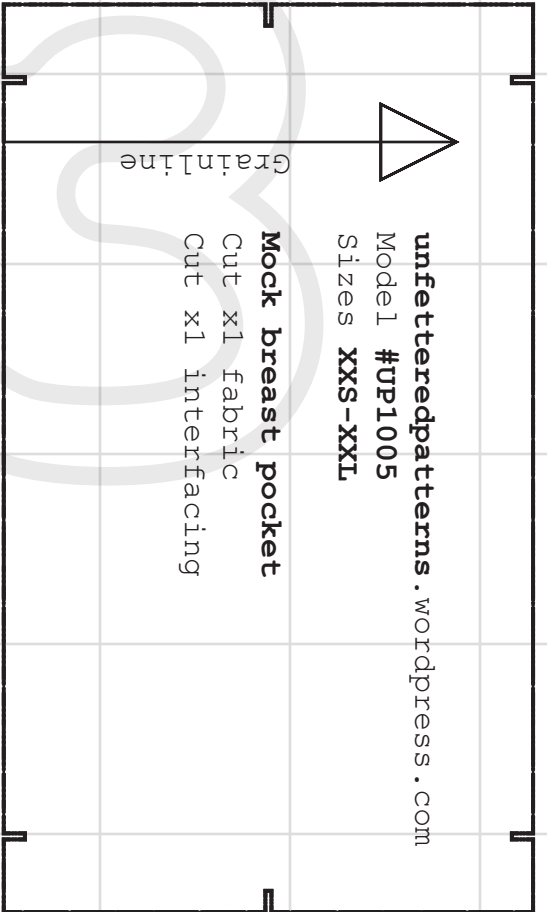
Sizes **XXS-XXL**

**Mock breast pocket**

Cut x1 fabric

Cut x1 interfacing

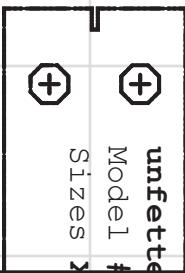
Grainline



unfetteredpatterns.wordpress.com

Model #UP1005

Sizes **XXS-XXL**



Cut on this line





Cut on this line

Cut on this line

Hem allowance

Cut x1 interfacing

Cut on this line

# unfettered

—unfettered patterns—

unfetteredpatterns . WOR

Model #UP1005

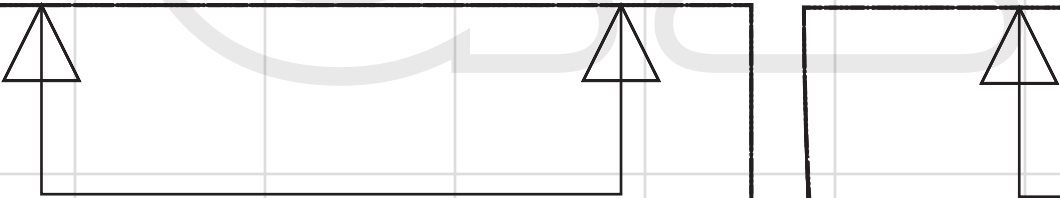
Sizes **XXS-XXL**

## Collar

Cut x2 fabric

Cut x1 interfacing

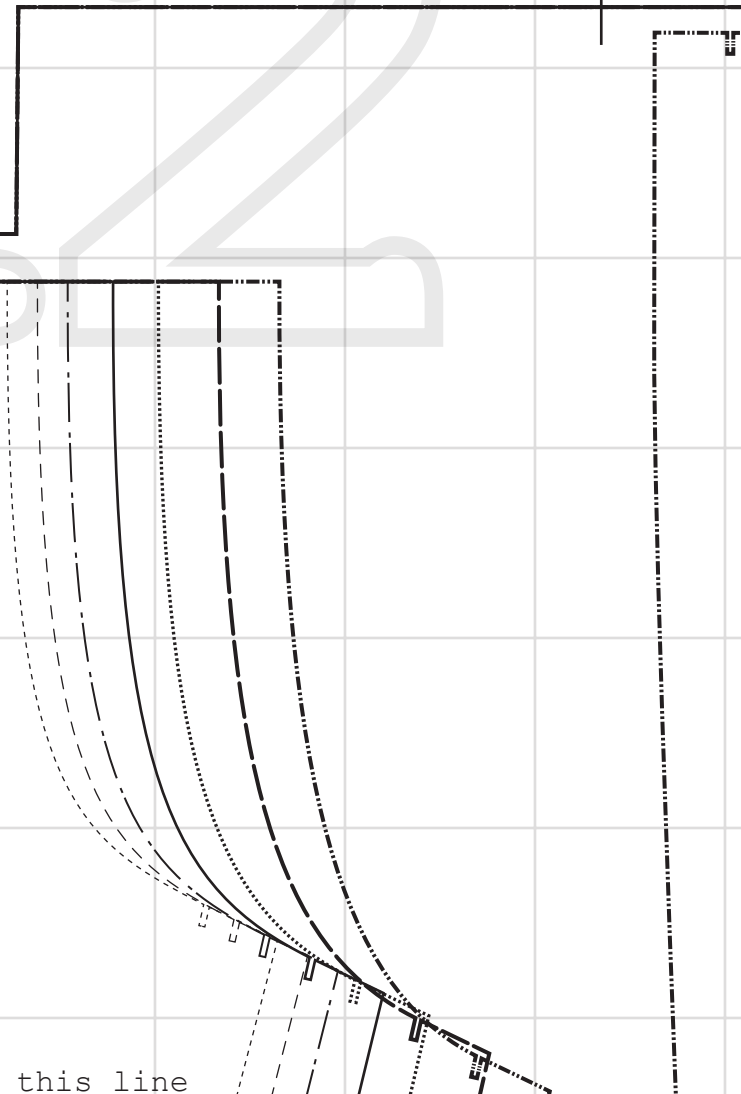
Grainline



Cut on this line

4 cm

Grainline



Cut on this line

*unfettered*  
— unfettered patterns —

unfetteredpatterns . w

Model #UP1005

Sizes XXS-XXL

Back Facing

Cut on fabric

Cut on this line

unfetteredpatterns.wordpress.com

Model #UP1005

Sizes **XXS-XXL**

**Flap**

Cut x4 fabric

Cut x4 interfacing

unfetteredpatterns.wordpress.com

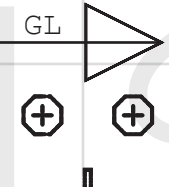
UP1005

XXS-XXL

**Welt**

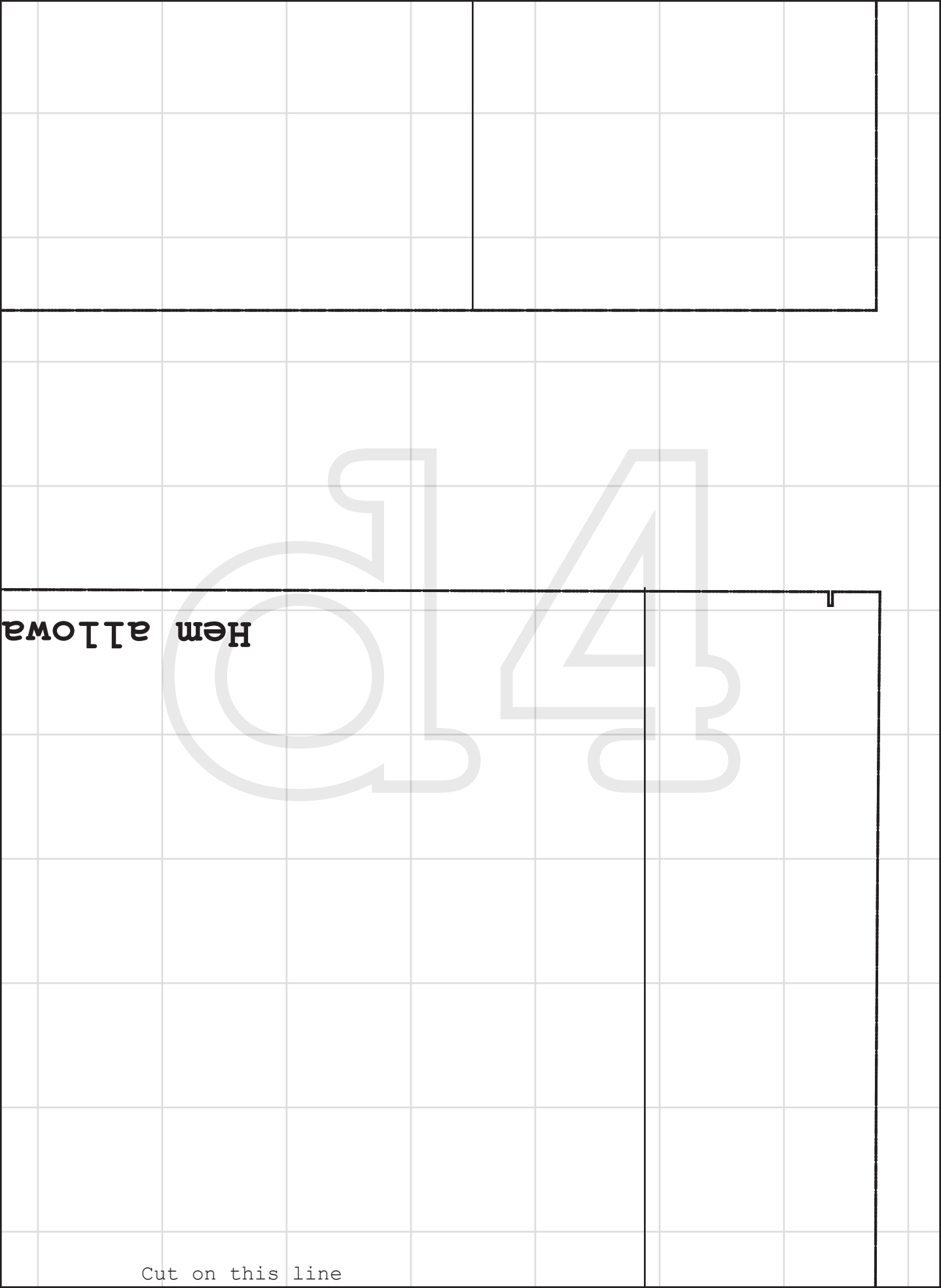
Cut x4 fabric

Cut x4 interfacing



nce 4 cm

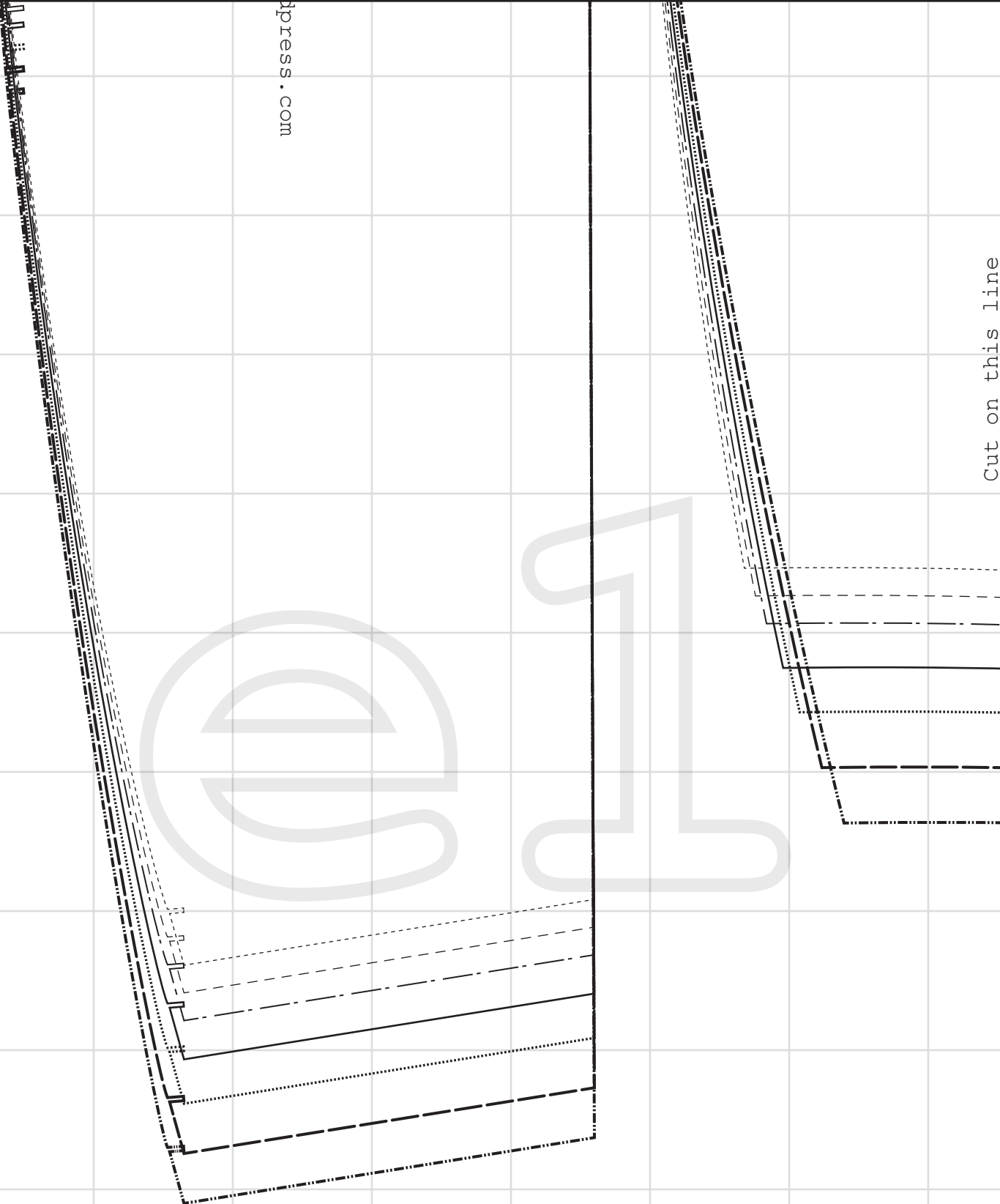
Cut on this line



© 14

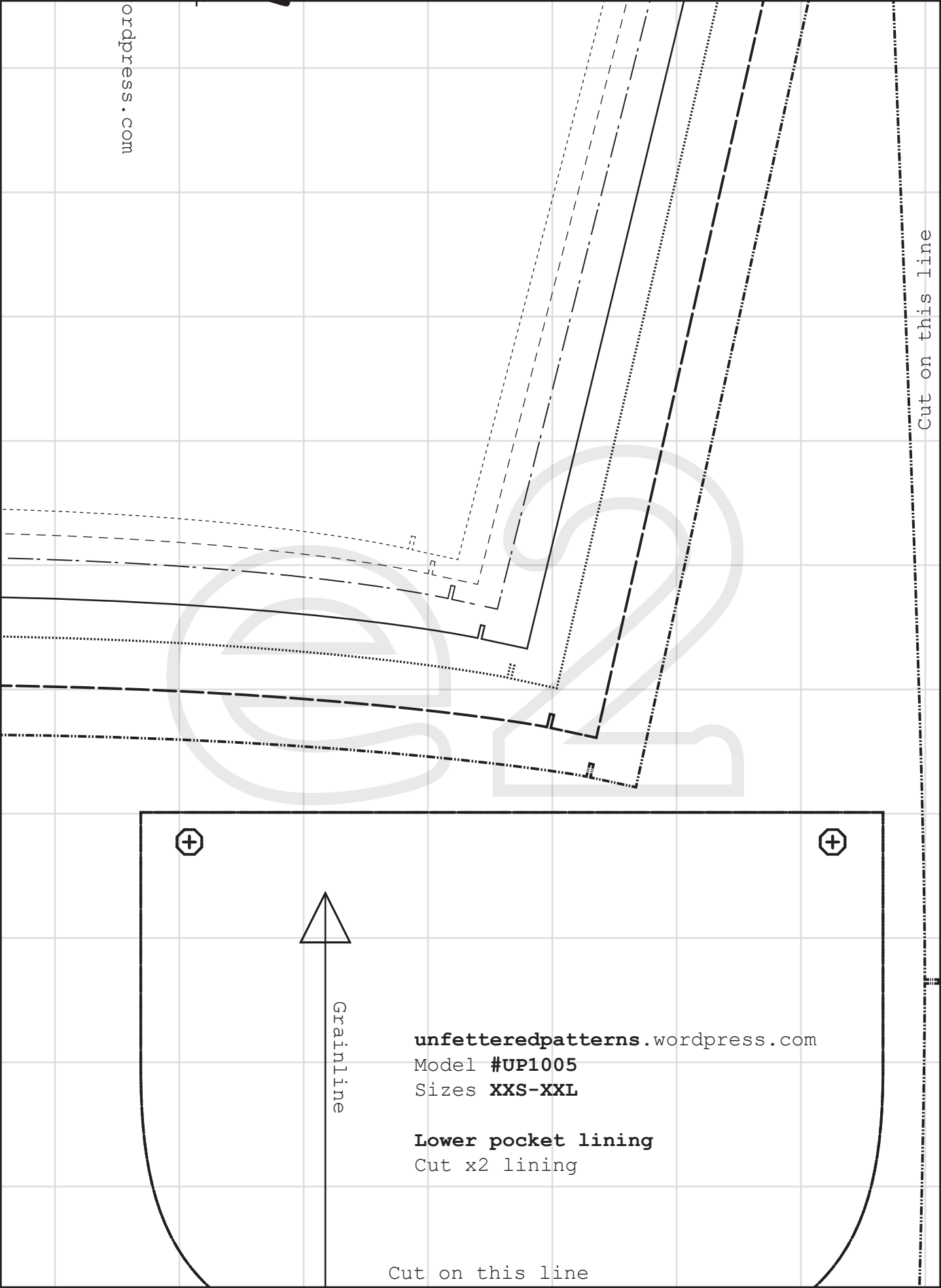
Hem allowance

Cut on this line



Cut on this line

Cut on this line



Grainline

unfetteredpatterns.wordpress.com

Model #UP1005

Sizes **XXS-XXL**

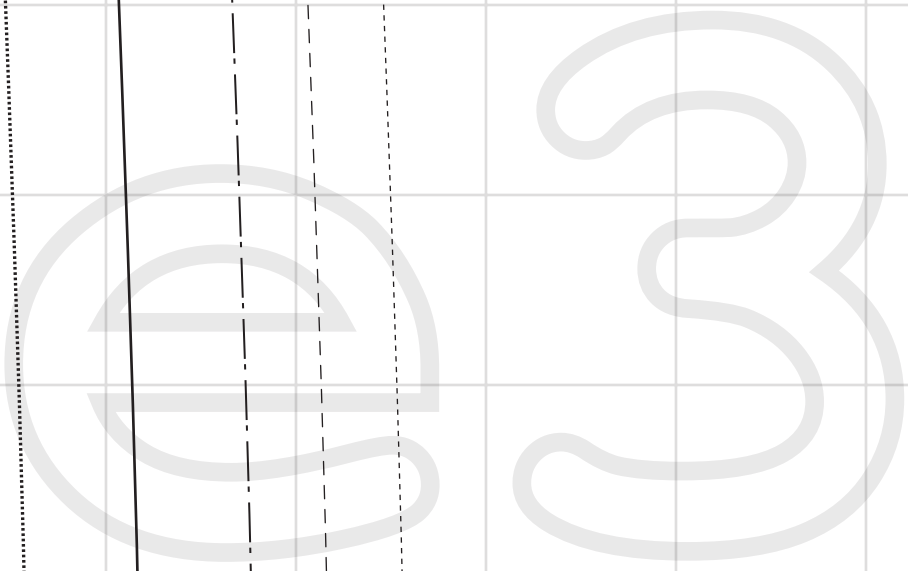
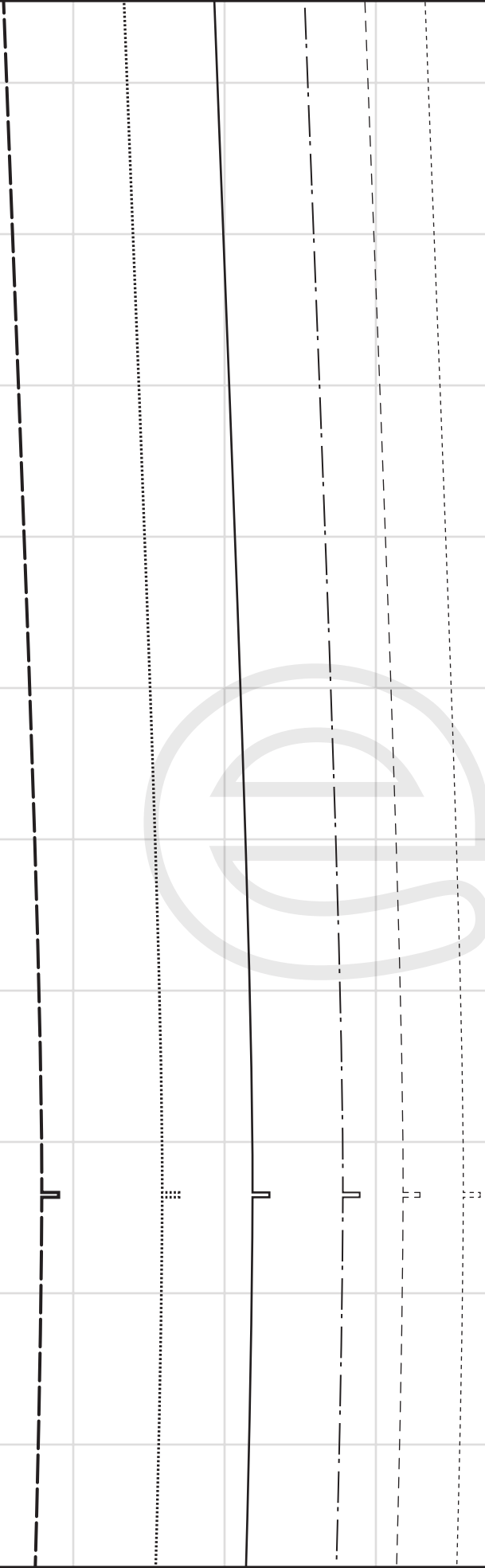
**Lower pocket lining**

Cut x2 lining

Cut on this line

Cut on this line



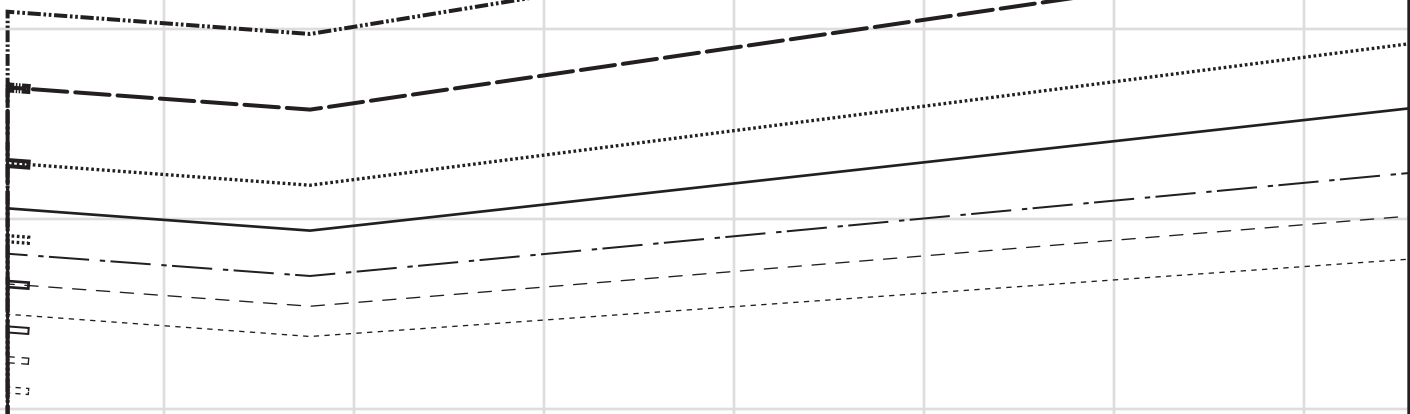


Cut on this line

Cut on this line



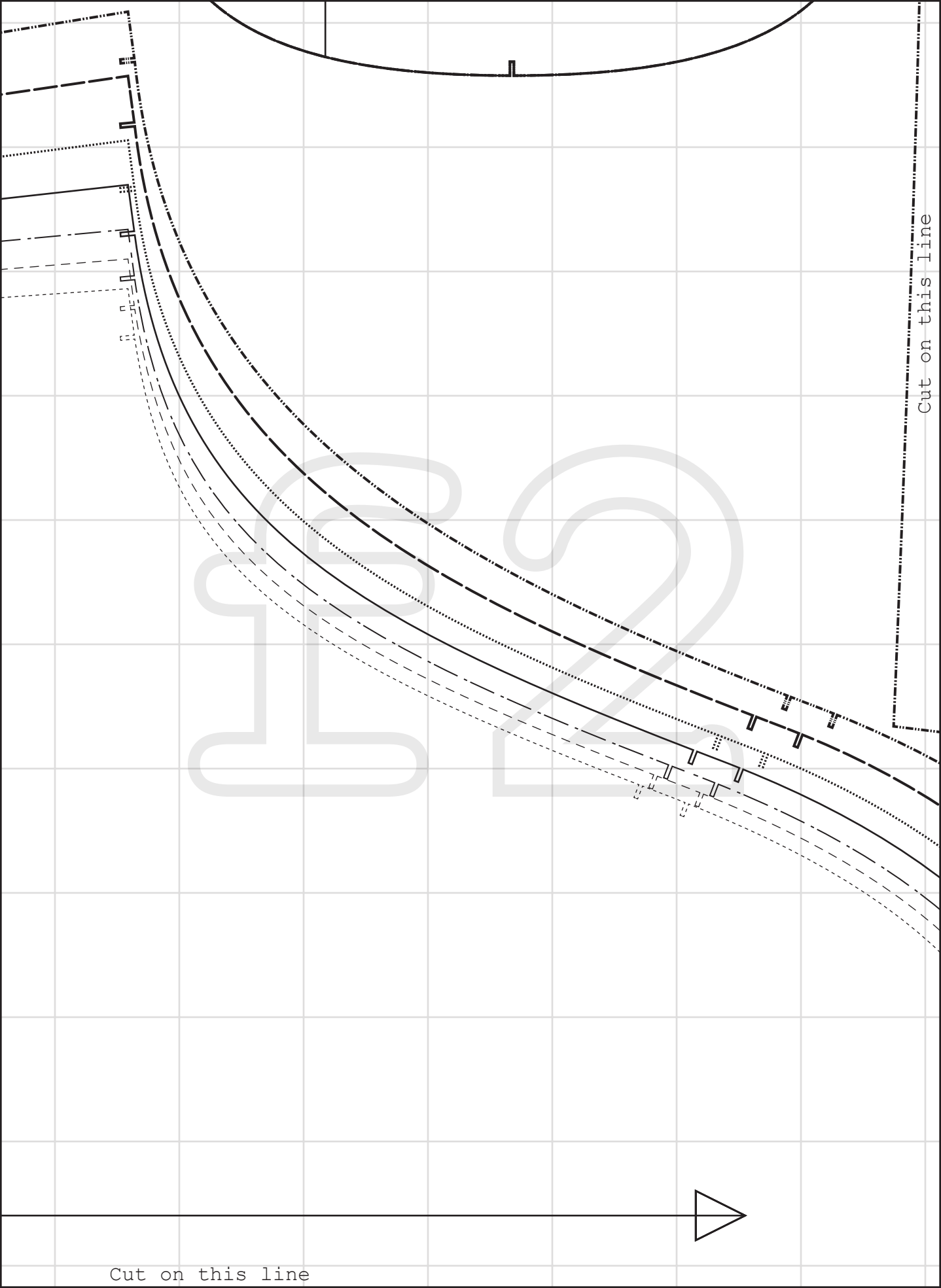
Cut on this line



Cut on this line

Grainline

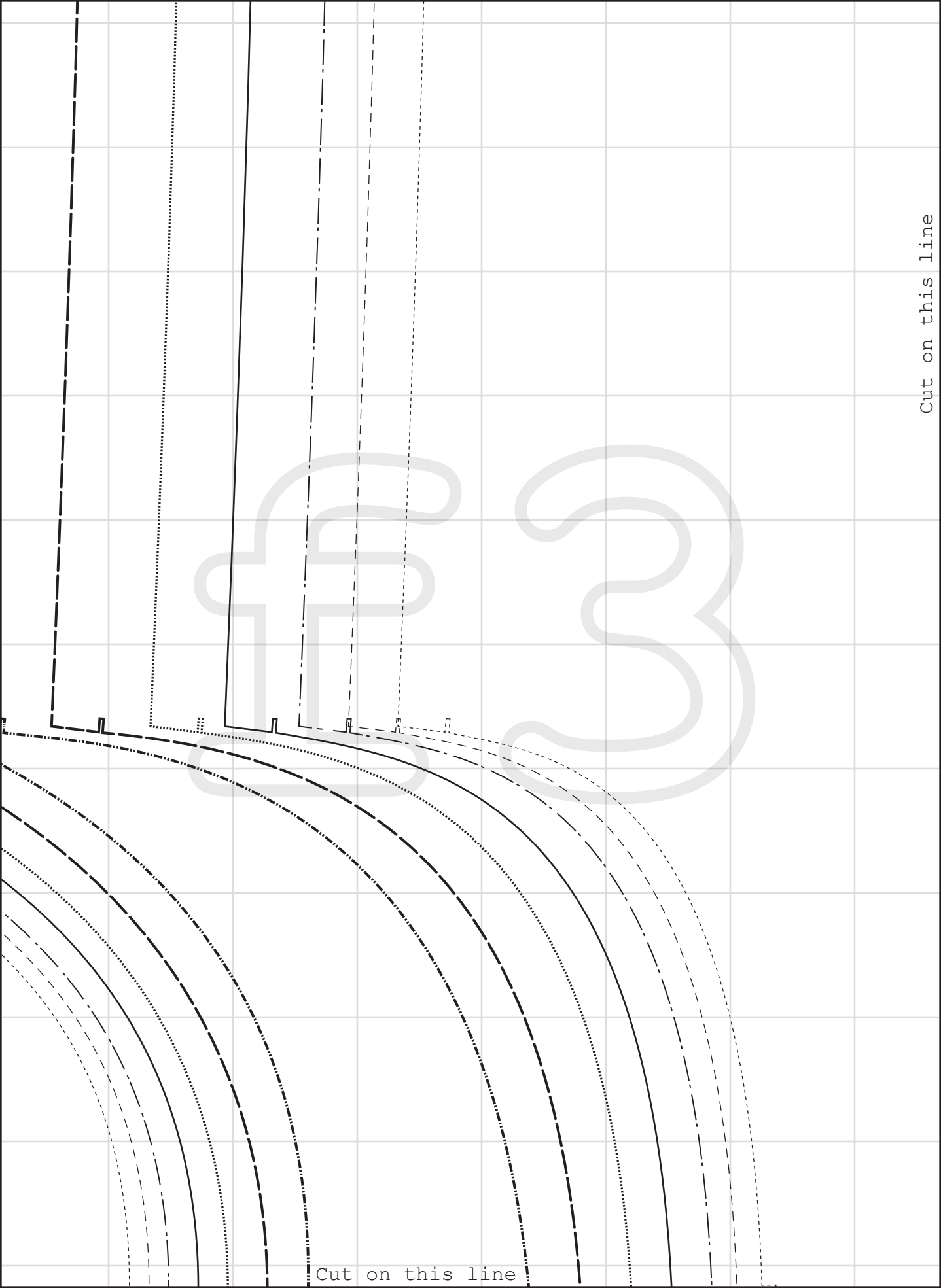
Cut on this line



Cut on this line

Cut on this line





Cut on this line

Cut on this line

-----	SXX
-----	SX
-----	S
-----	M
-----	L
-----	XL
-----	XXL

SIZE KEY



Grainline

Back  
Cut x2 fabric

Sizes **XXS-XXL**  
Model #**UP1005**

[unfetteredpatterns.wordpress.com](http://unfetteredpatterns.wordpress.com)

*unfettered*  
—unfettered patterns—

Cut on this line



Model #UPI005

Sizes **XXS-XXL**

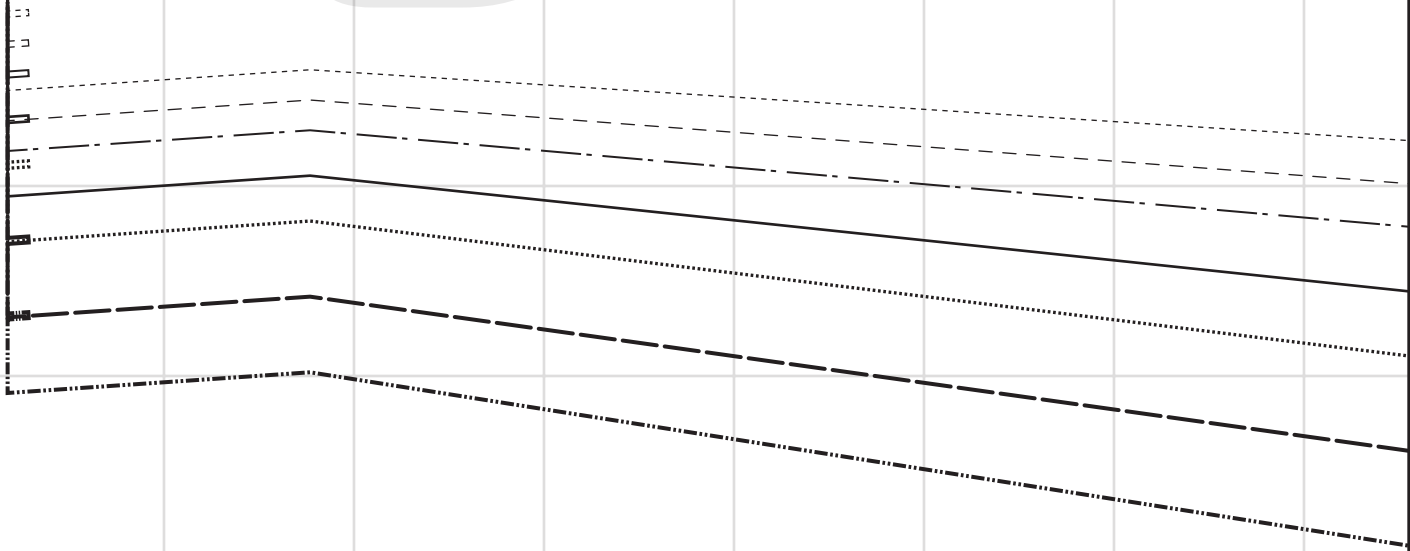
Cut on this line

**Sleeve**  
Cut x2 fabric

SIZE KEY

XXXL	-----
XXL	-----
L	.....
M	_____
S	-----
XS	-----
XXS	.....

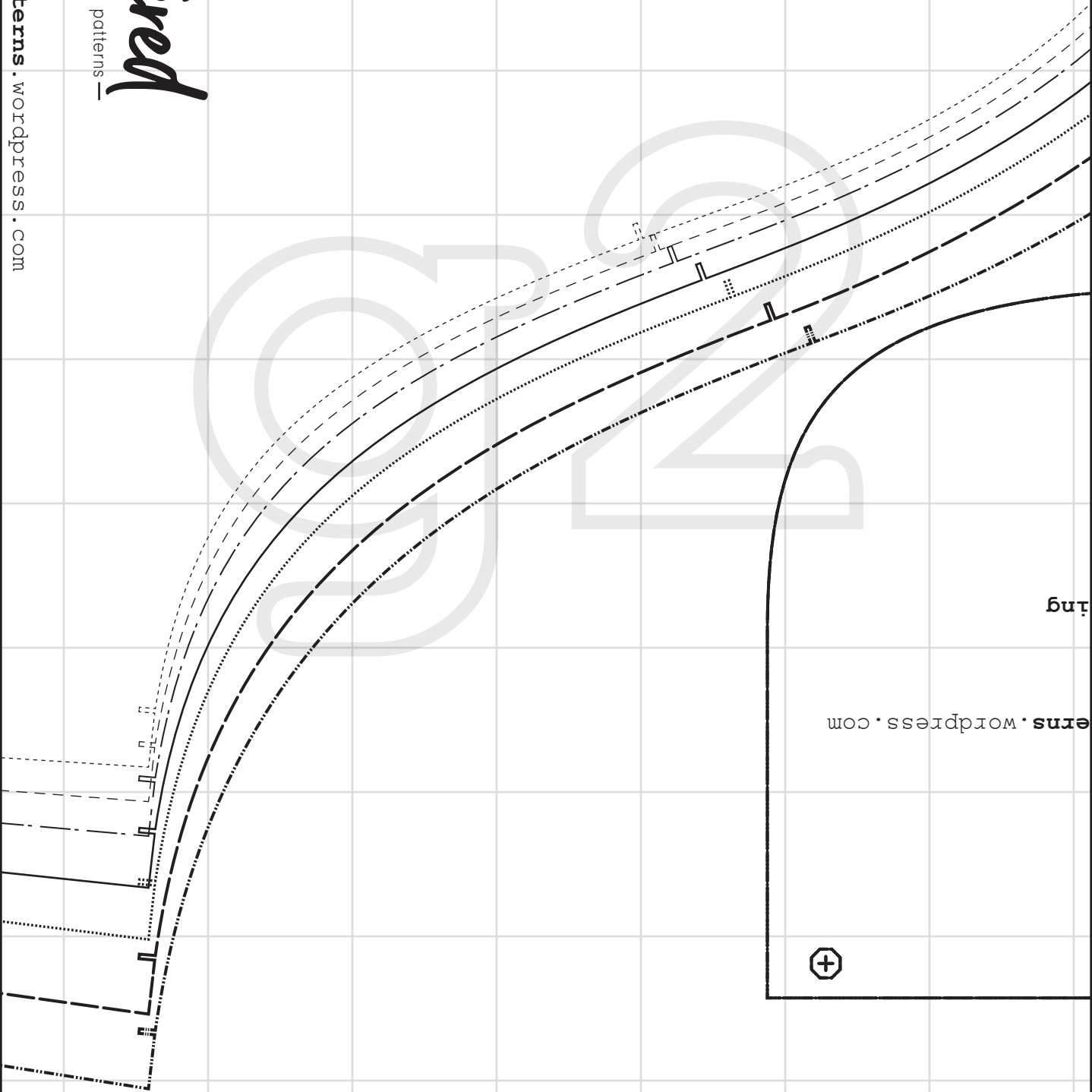
**Hem allowance 4 cm**



Cut on this line

but

erns.wordpress.com



*unfettered*  
— unfettered patterns —

unfetteredpatterns.wordpress.com



unfetteredpat  
Model #UP1005  
Sizes XXS-XXL  
Top pocket lin  
Cut x2 lining

Grainline



Cut on this line

g4

