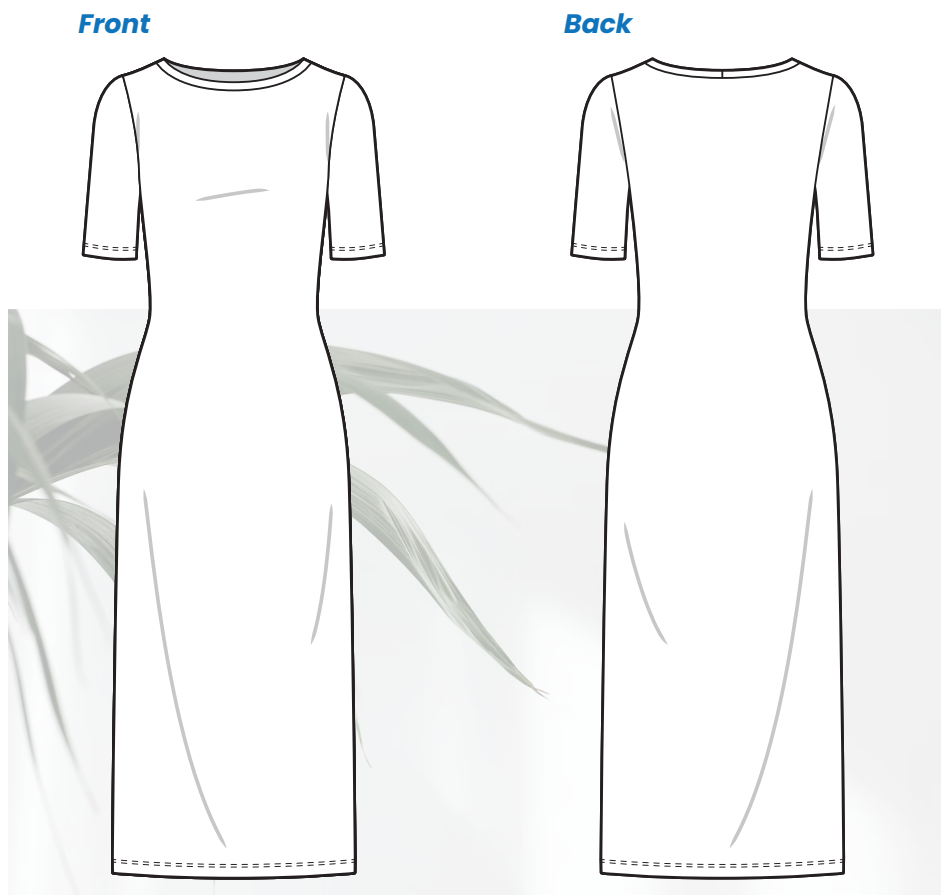


## #UPI007 Long dress

This long, breezy dress with short sleeves is designed for jersey fabrics, making it an enjoyable sewing project. Its relaxed silhouette is easy to fit, so make it yours now!

**1 cm seam allowance included!**



### Material

- 160 x 150 cm of 30-40% stretch jersey with spandex
- All-purpose thread
- Stretch needle
- Twin stretch needle

### Print & Assemble

- First, be sure to use ACROBAT READER to open your PDF sewing patterns. It's free!
- Then, open your file and click on the LAYERS icon (left side of the screen) and uncheck all the sizes you won't need.
- Now, click on the PRINT icon at the top of the screen. The print settings will appear, so verify that the ACTUAL SIZE option is checked. Click on the PRINT button!
- A 5 x 5 cm (and 2 x 2") control square is provided to ensure that your pattern is true to size.
- To ASSEMBLE, cut the sheets at the bottom and right margins, as indicated. Each sheet is labelled with a letter and a number (A1, B2...), so tape them together in numerical and alphabetical order. The sheets on one row should have the same letter, and the ones on the same column should have the same number.

### Sizing Guide

	XXS	XS	S	M	L	XL	XXL
<b>Bust</b>	85 cm	89 cm	93 cm	99 cm	105 cm	113 cm	121 cm
<b>Waist</b>	64 cm	68 cm	72 cm	78 cm	84 cm	92 cm	100 cm
<b>Hips</b>	92 cm	96 cm	100 cm	106 cm	112 cm	120 cm	128 cm

This pattern is drafted according to a standard height of **1.64 m**.

### Garment measurements

- **Length:** approx. 110 cm

## #UP1007

### Long dress

---

#### Sewing Assembly

Unless otherwise specified, sew using a **1 cm** wide seam allowance.

1. Sew the shoulders.
2. Make and attach the neckband (stretch to fit).
3. Attach the sleeves.
4. Sew the front and back at the side and underarm seams.
5. Hem the bottom of the dress and the sleeves (turn once 3 cm).

#### Pattern Pieces

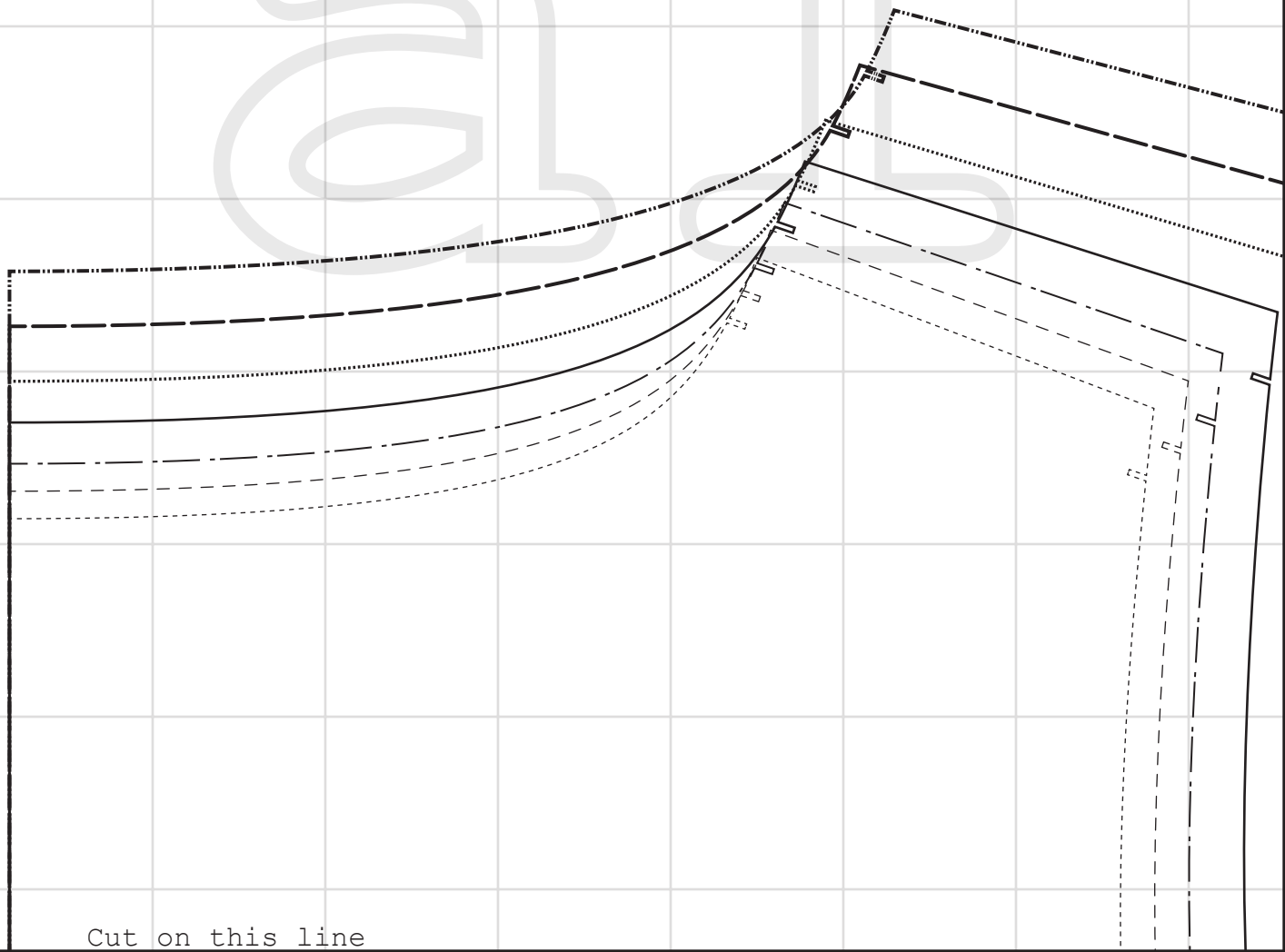
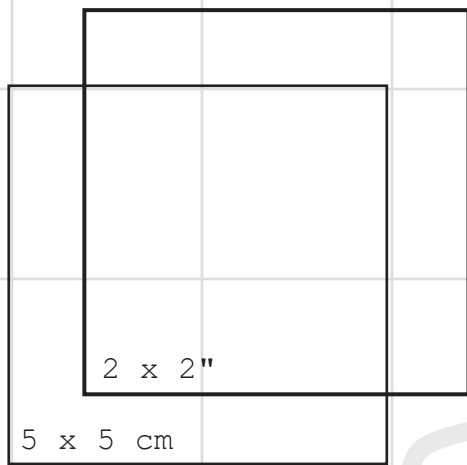
- Front, 1x fabric
- Back, 1x fabric
- Neckband, 1x fabric
- Sleeve, 2x fabric



Share a photo of you  
wearing proudly  
your new breezy dress  
with

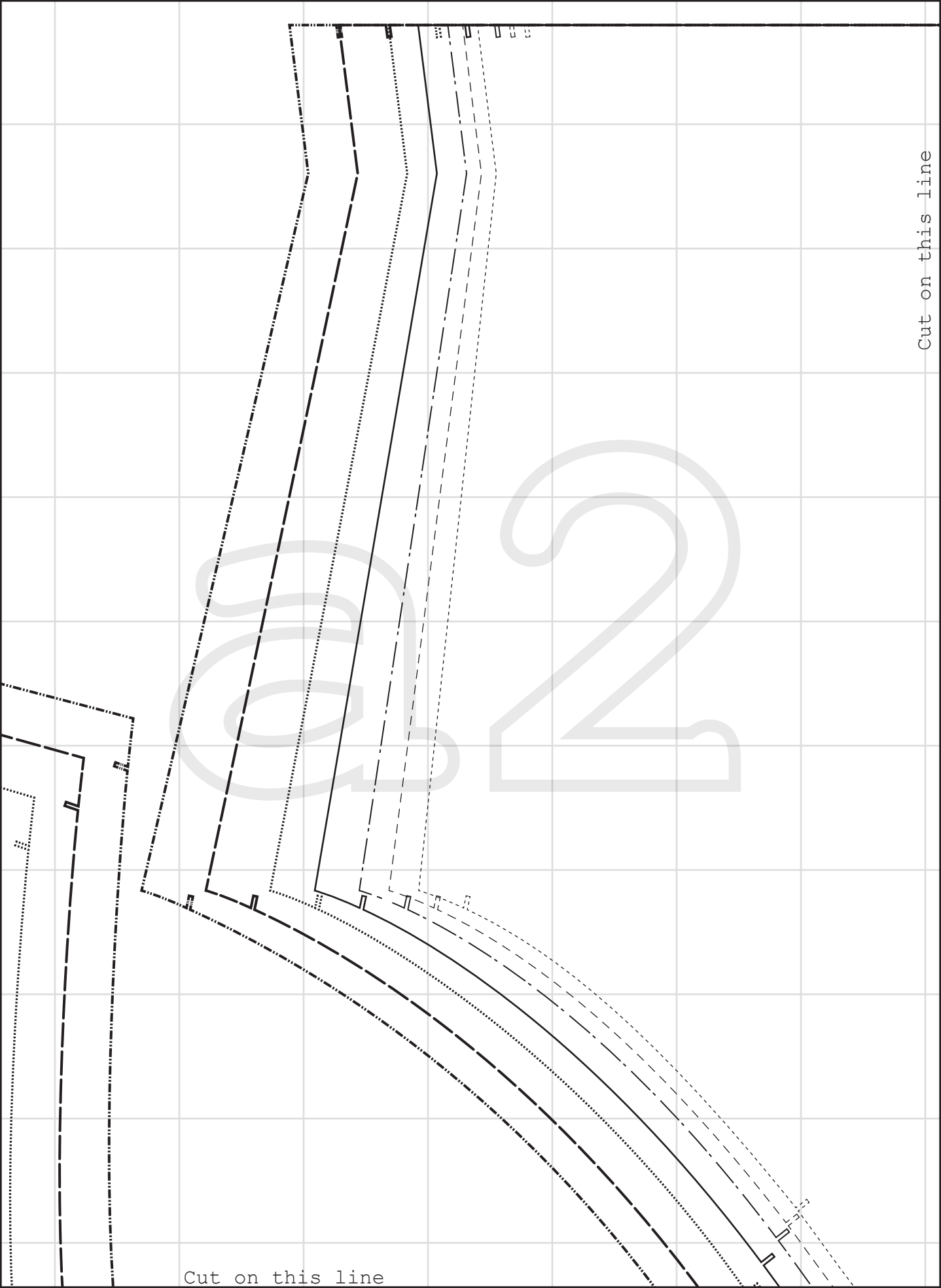
**#unfetteredpatterns!**





Cut on this line

Cut on this line



Cut on this line

Cut on this line

Hem allowance 3 cm

Cut on this line

Grainline

Sleeve  
Cut x2 fabric

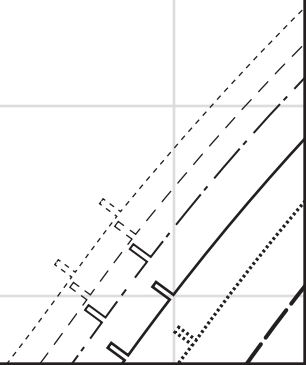
Sizes **XXS-XXL**  
Model #UP1007

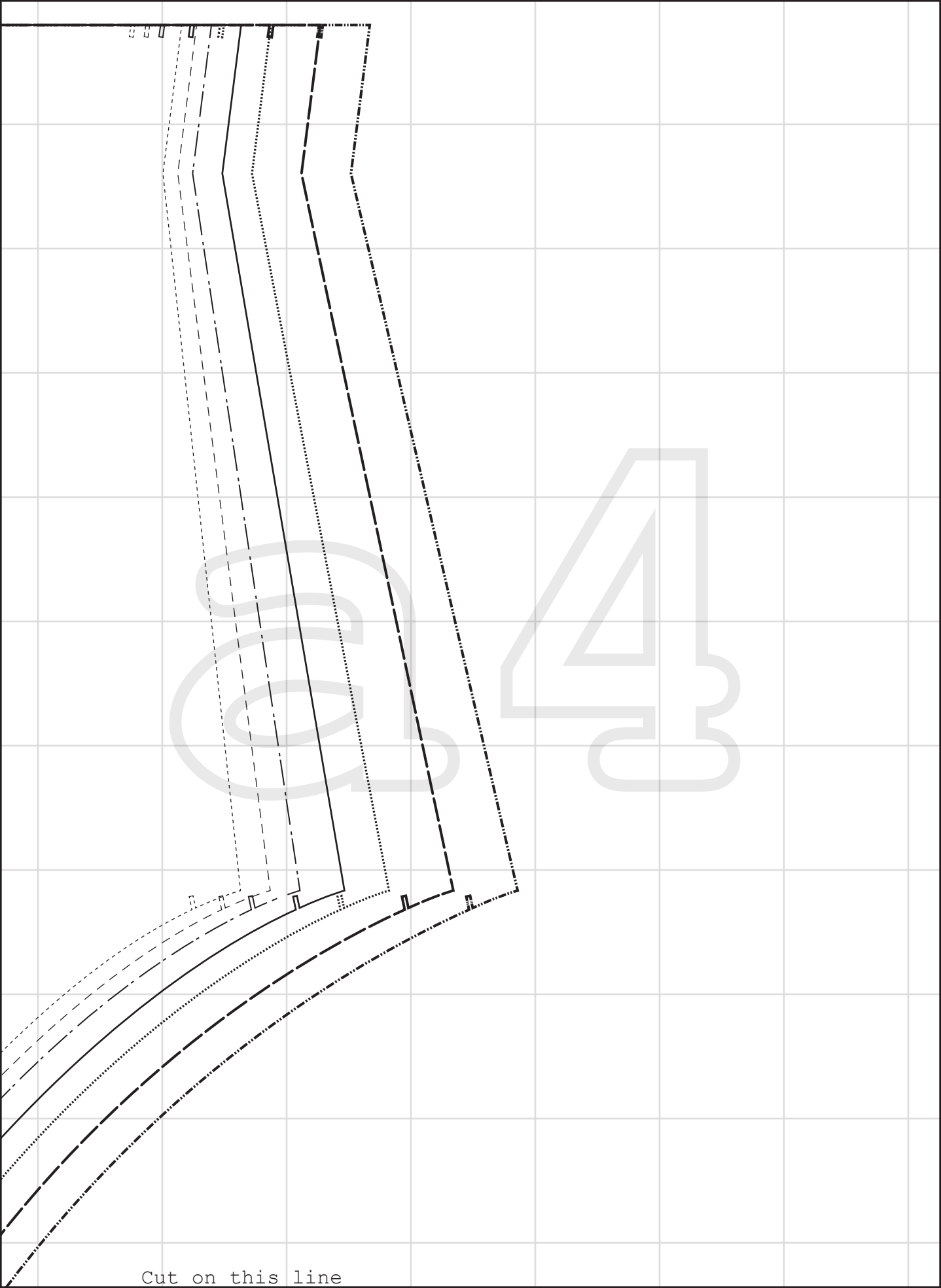
unfetteredpatterns.wordpress.com

unfettered  
—unfettered patterns—



Cut on this line





Cut on this line



*unfettered*  
— unfettered patterns —

[unfetteredpatterns.wordpress.com](http://unfetteredpatterns.wordpress.com)

Model #UP1007

Sizes **XXS-XXL**

**Back**

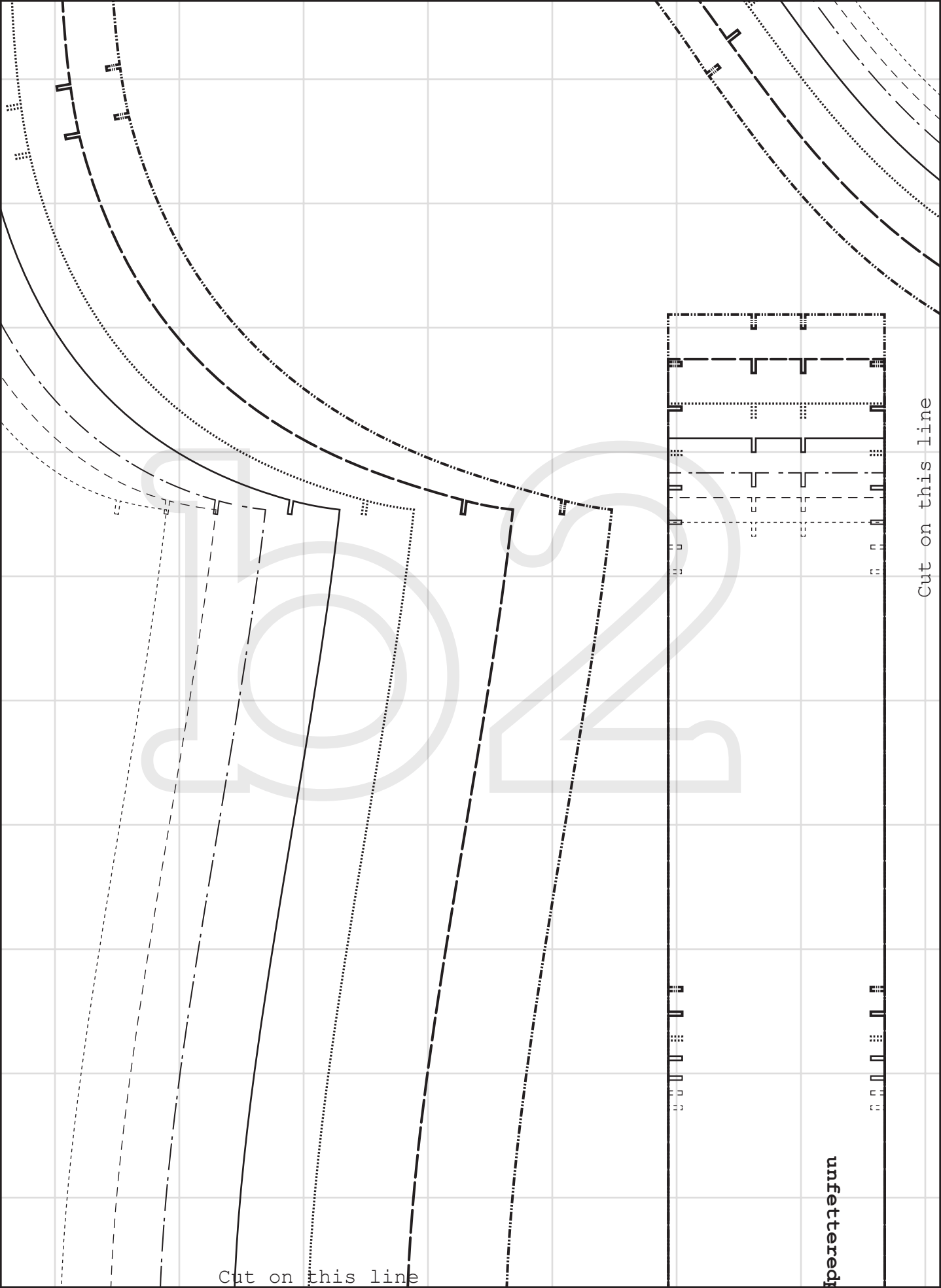
Cut x1 fabric



Cut on this line



Cut on this line



Cut on this line

Cut on this line

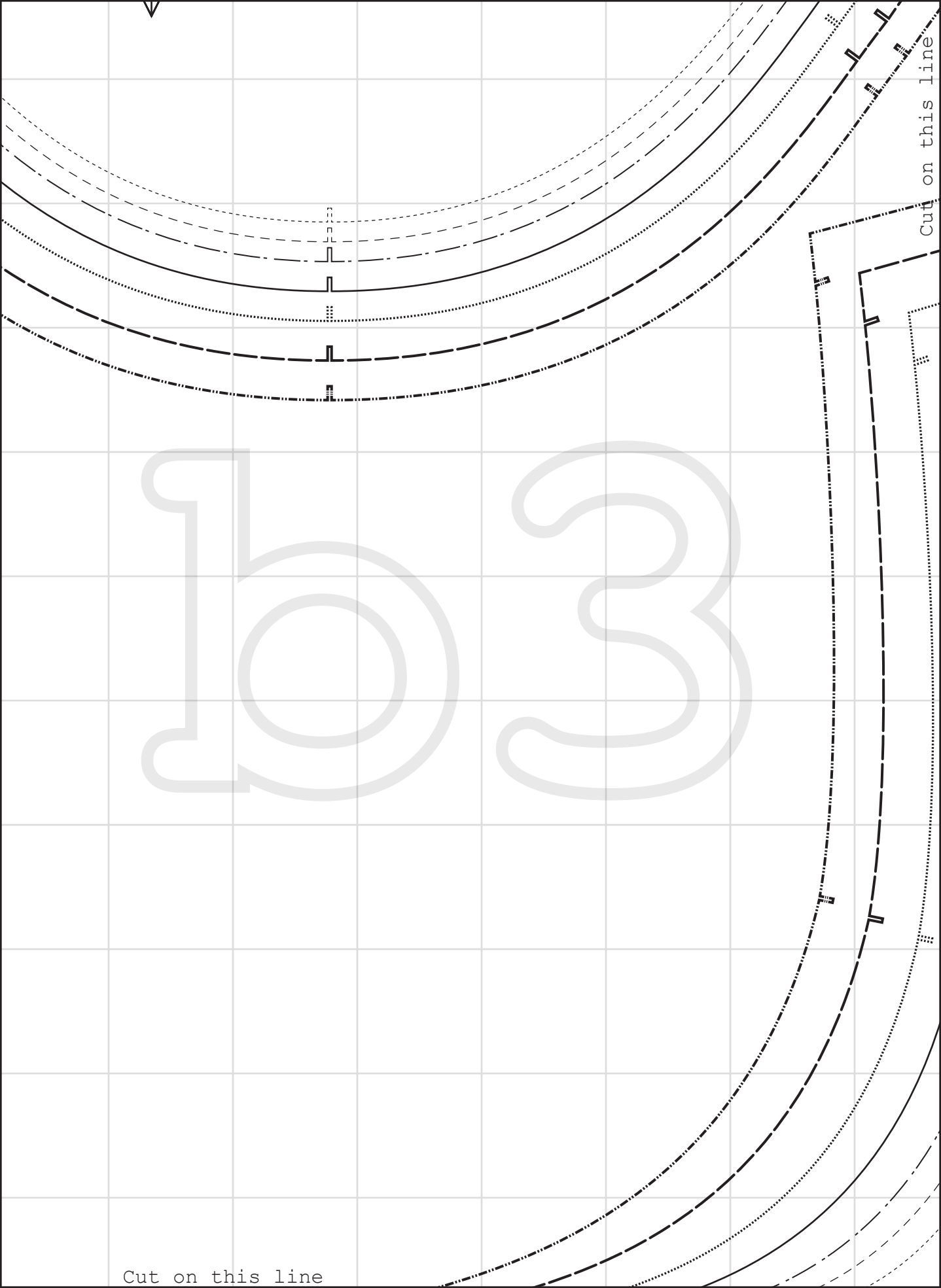
unfettered

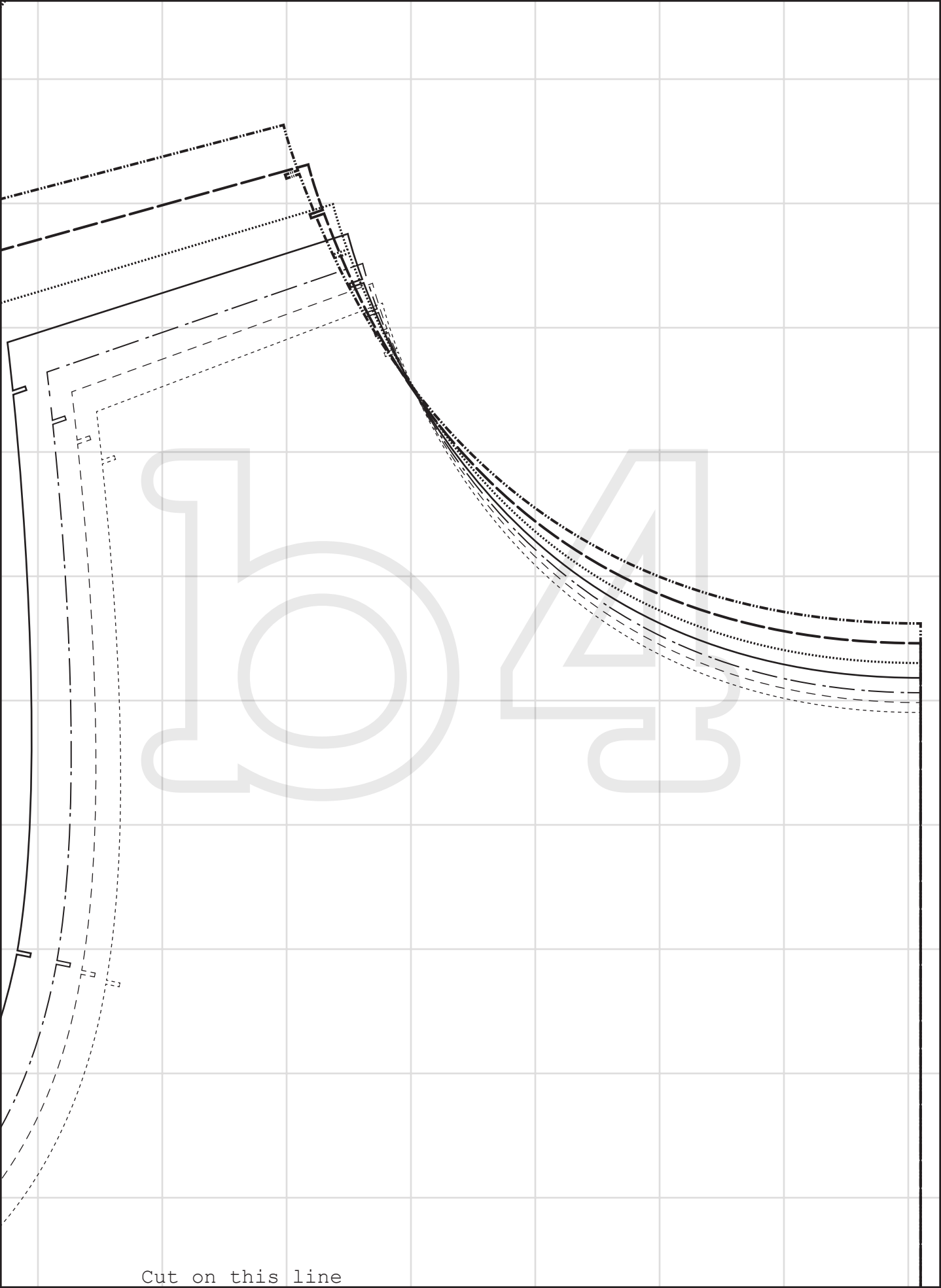


103

Cut on this line

Cut on this line





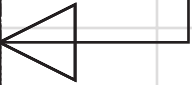
Cut on this line

Grainline

Cut on this line

### SIZE KEY

XXL	-----
XL	-----
L	-----
M	-----
S	-----
XS	-----
XXS	-----



Cut on this line

Cut on this line

patterns.wordpress.com

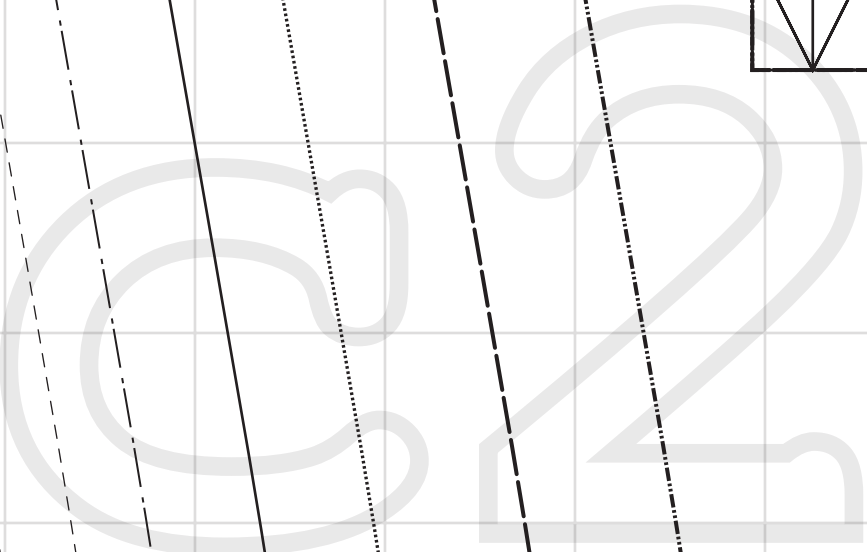
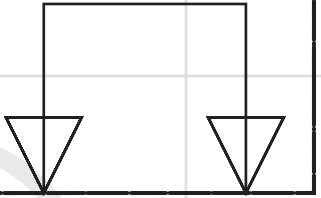
Model #UP1007

Sizes **XXS-XXL**

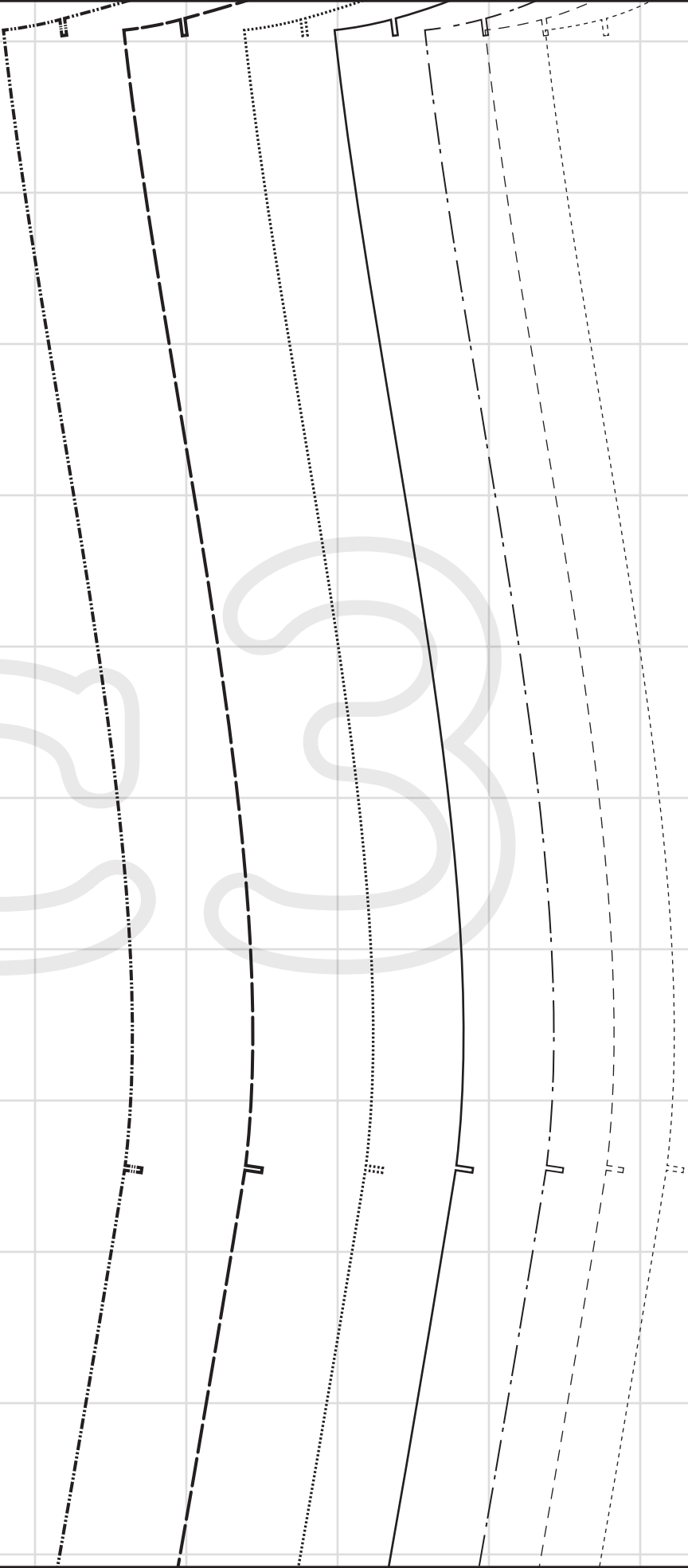
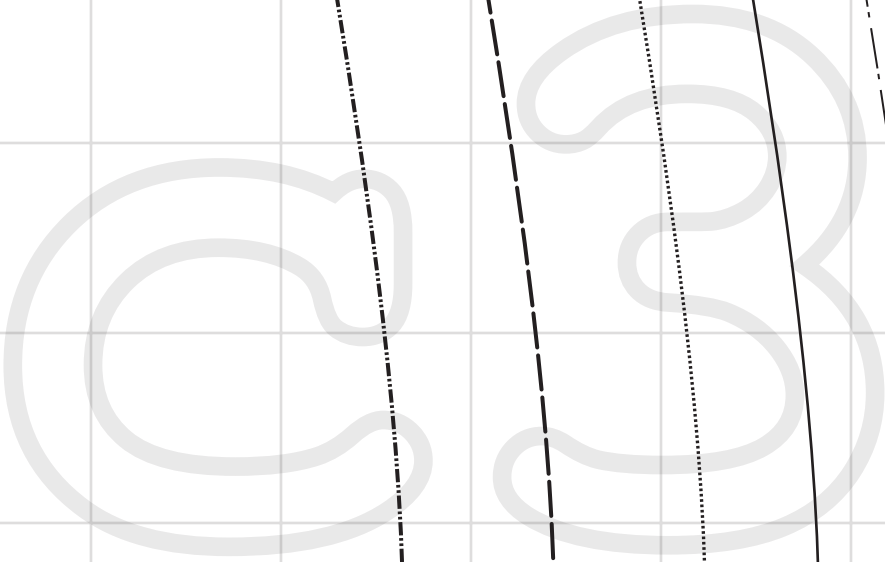
**Neckband**

Cut x1 fabric

Grainline



Cut on this line



Cut on this line

Cut on this line

# unfettered

— unfettered patterns —

[unfetteredpatterns.wordpress.com](http://unfetteredpatterns.wordpress.com)

Model #UP1007

Sizes **XXS-XXL**

**Front**

Cut x1 fabric

C4

Grainline

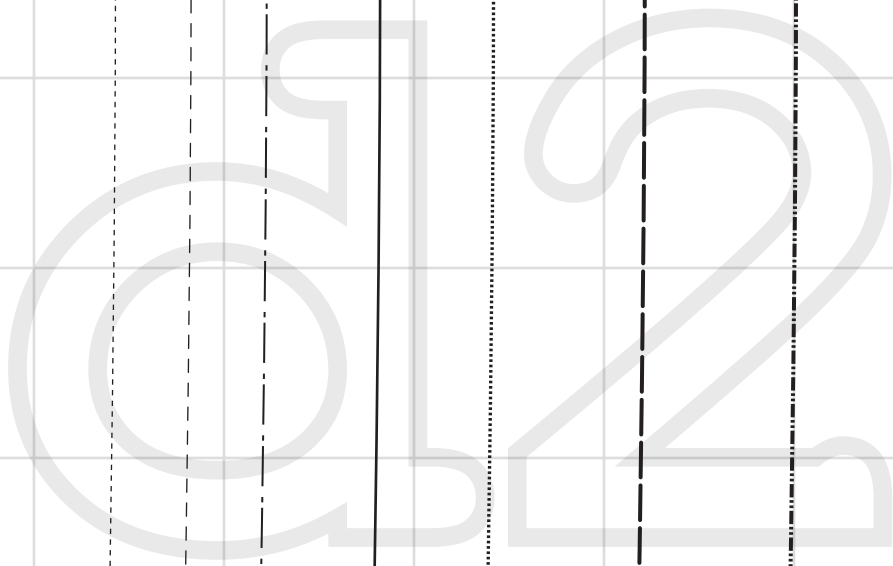
Cut on this line



Cut on this line

Cut on this line

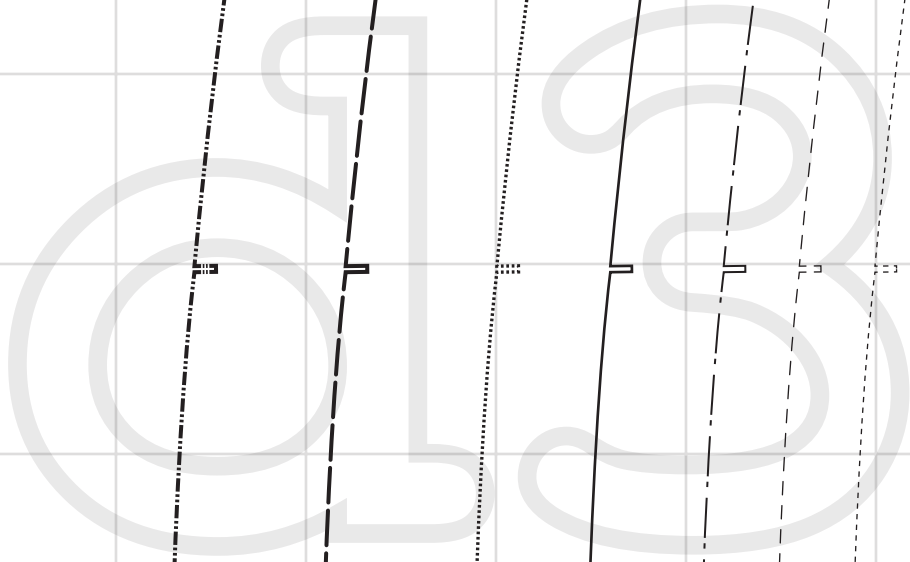
Cut on this line



Cut on this line



Cut on this line



Cut on this line

SIZE KEY

- XXL---
- - -XL-
- .....L.....
- \_\_\_\_\_M\_\_\_\_\_
- - -S-
- - -XS-
- XXS---

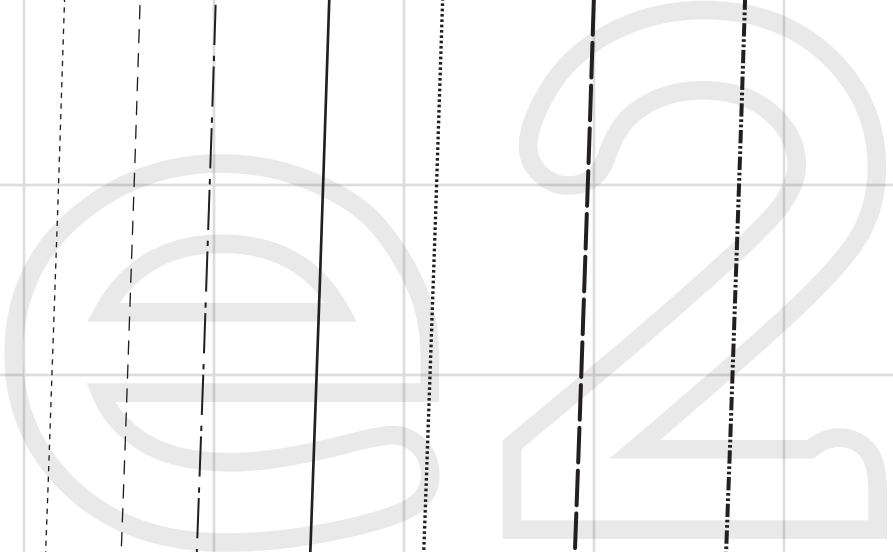


Cut on this line



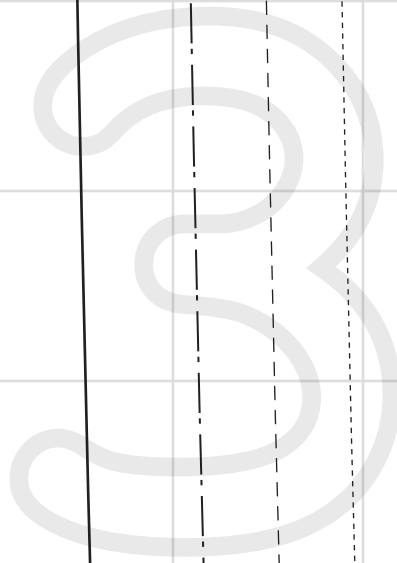
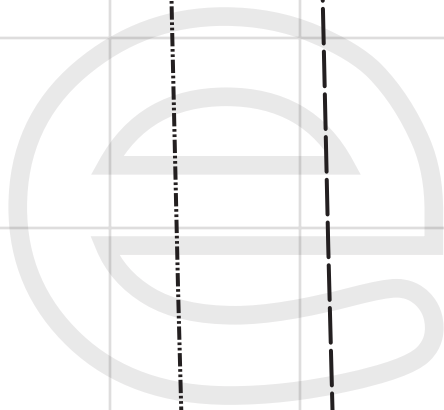
Cut on this line

**Hem allowance 3 cm**



Cut on this line

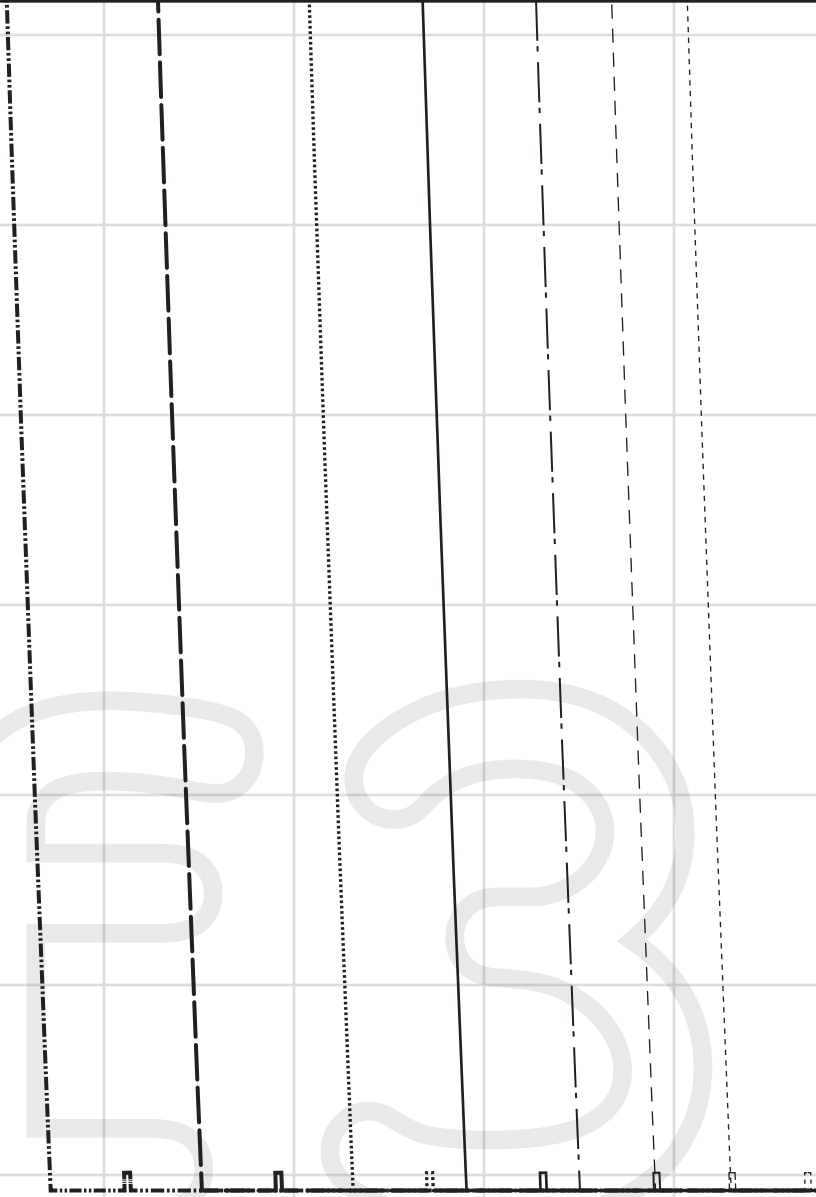
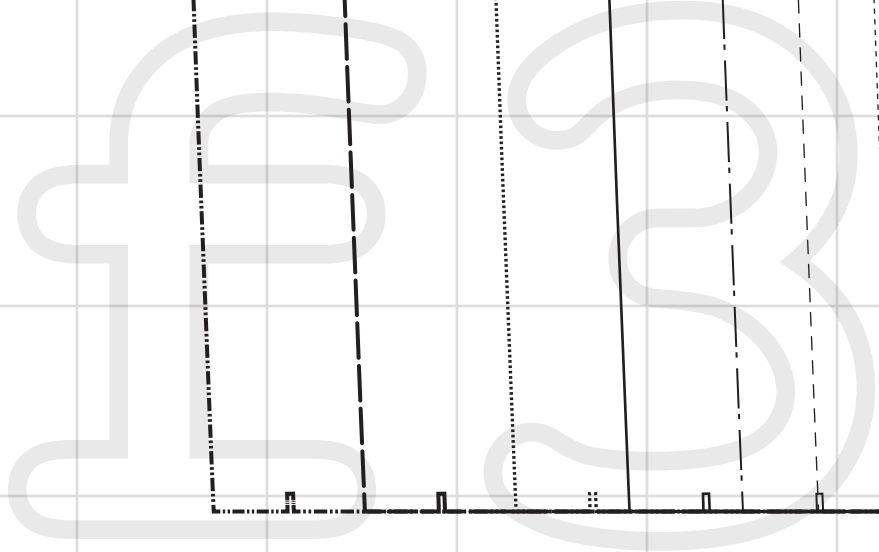
Cut on this line



Cut on this line



Cut on this line



Cut on this line

**Hem allowance 3 cm**

