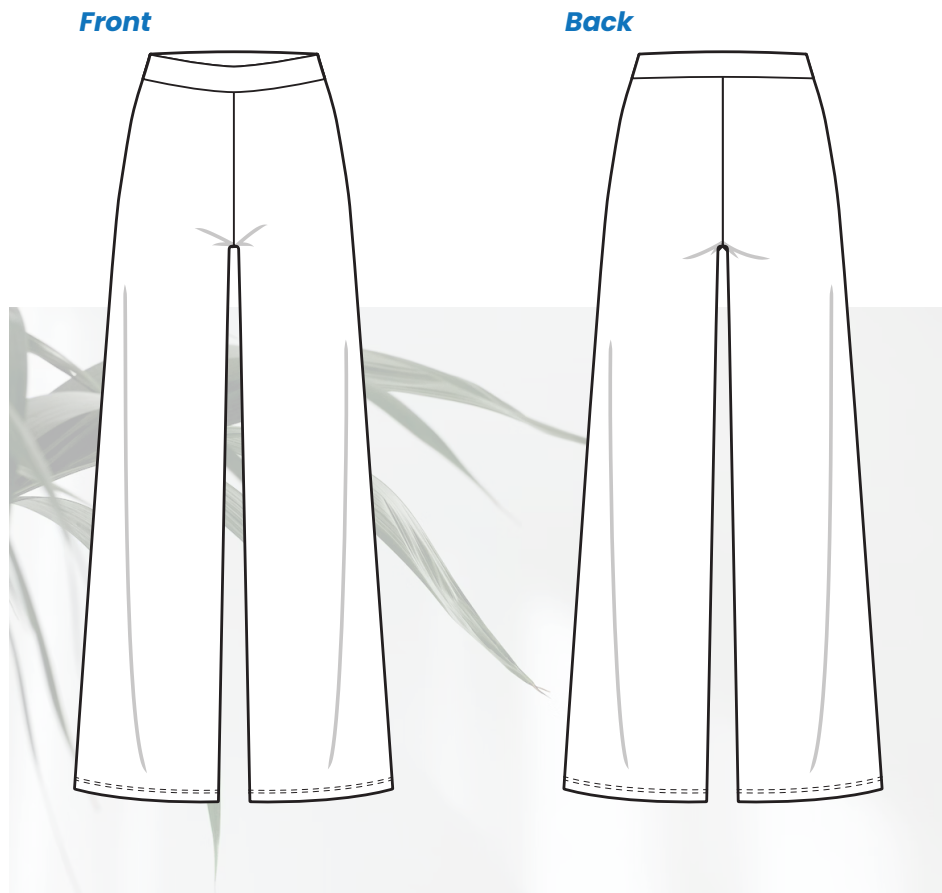


#UP1015 Lounge pants

Relax with style! Our lounge pants feature a wide leg designed for knits and a flat elastic waistband. Cozy, but stylish, these pants make for an easy sewing project suitable to beginners. Enjoy the comfort of these pants now!

1 cm seam allowance included!



Material

- 200 x 150 cm of 40–50% stretch jersey with spandex
- All-purpose thread
- Stretch needle
- Twin stretch needle
- Roughly 1 m of knitted elastic (4 cm wide)

Print & Assemble

- First, be sure to use ACROBAT READER to open your PDF sewing patterns. It's free!
- Then, open your file and click on the LAYERS icon (left side of the screen) and uncheck all the sizes you won't need.
- Now, click on the PRINT icon at the top of the screen. The print settings will appear, so verify that the ACTUAL SIZE option is checked. Click on the PRINT button!
- A 5 x 5 cm (and 2 x 2") control square is provided to ensure that your pattern is true to size.
- To ASSEMBLE, cut the sheets at the bottom and right margins, as indicated. Each sheet is labelled with a letter and a number (A1, B2...), so tape them together in numerical and alphabetical order. The sheets on one row should have the same letter, and the ones on the same column should have the same number.

Sizing Guide

	XXS	XS	S	M	L	XL	XXL
Bust	85 cm	89 cm	93 cm	99 cm	105 cm	113 cm	121 cm
Waist	64 cm	68 cm	72 cm	78 cm	84 cm	92 cm	100 cm
Hips	92 cm	96 cm	100 cm	106 cm	112 cm	120 cm	128 cm

This pattern is drafted according to a standard height of **1.64 m**.

Garment measurements

- **Rise:** approx. 27 cm
- **Inseam:** approx. 69 cm

#UP1015

Lounge pants

Pattern Pieces

- Front leg, 2x fabric
- Back leg, 2x fabric
- Elastic length, 1x knitted elastic
- Front waist, 1x fabric
- Back waist, 1x fabric

Sewing Assembly

Unless otherwise specified, sew using a **1 cm** wide seam allowance.

1. Sew the legs at the inseams and side seams.
2. Sew the legs together at the crotch.
3. Overlap the ends of the knitted elastic by 2 cm and sew in place (rectangle stitch or zigzag stitch).
4. Make the waistband and insert the elastic inside.
5. Attach the waistband to the pants. Use the “stitch in the ditch” technique to keep the elastic in place inside the waistband.
6. Hem the bottom of the legs (turn once 3 cm).



Share a photo of you
wearing proudly
your new lounge pants
with

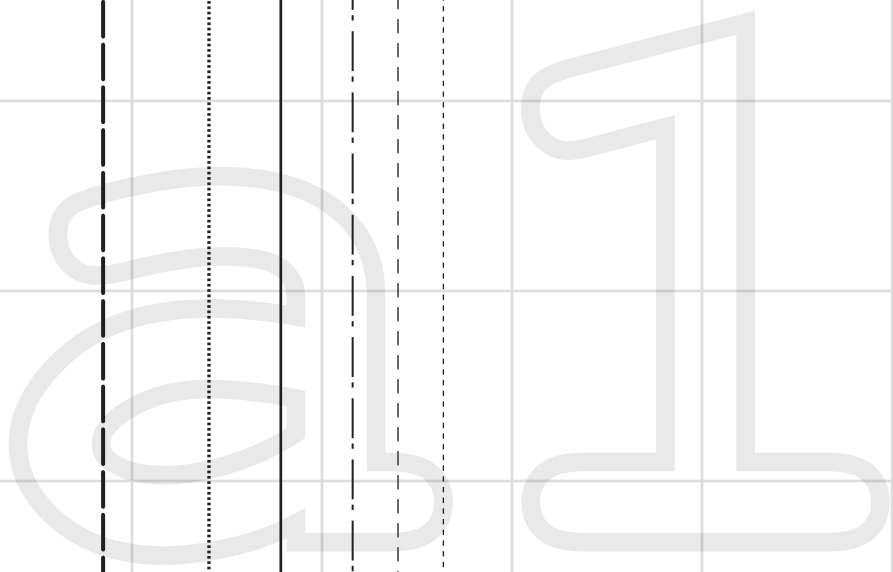
#unfetteredpatterns!



allowance 3 cm

Cut on this line

Cut on this line



unfetteredpatterns.wordpress.com

Model #UP1015

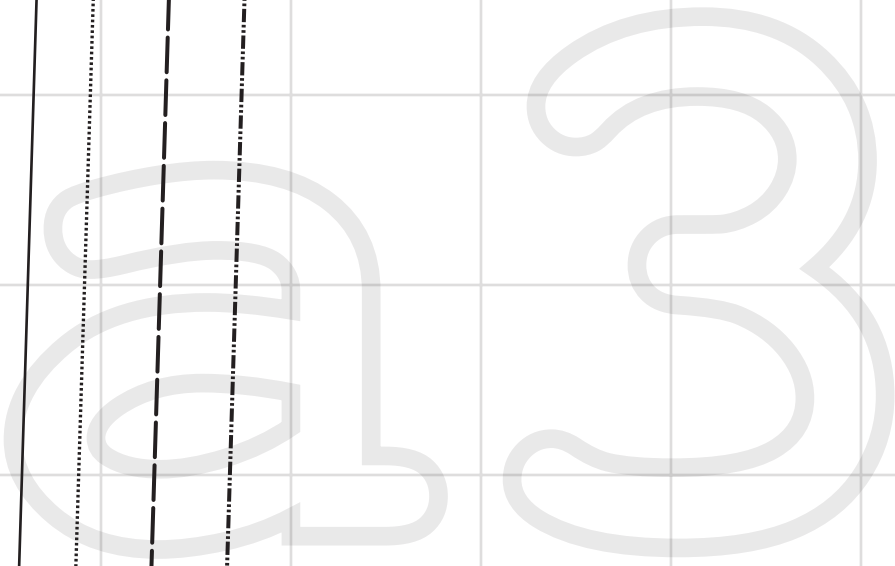
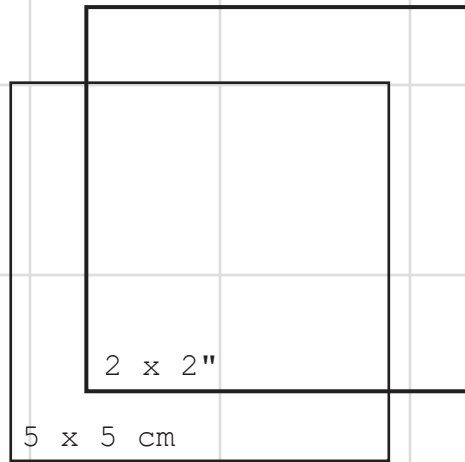
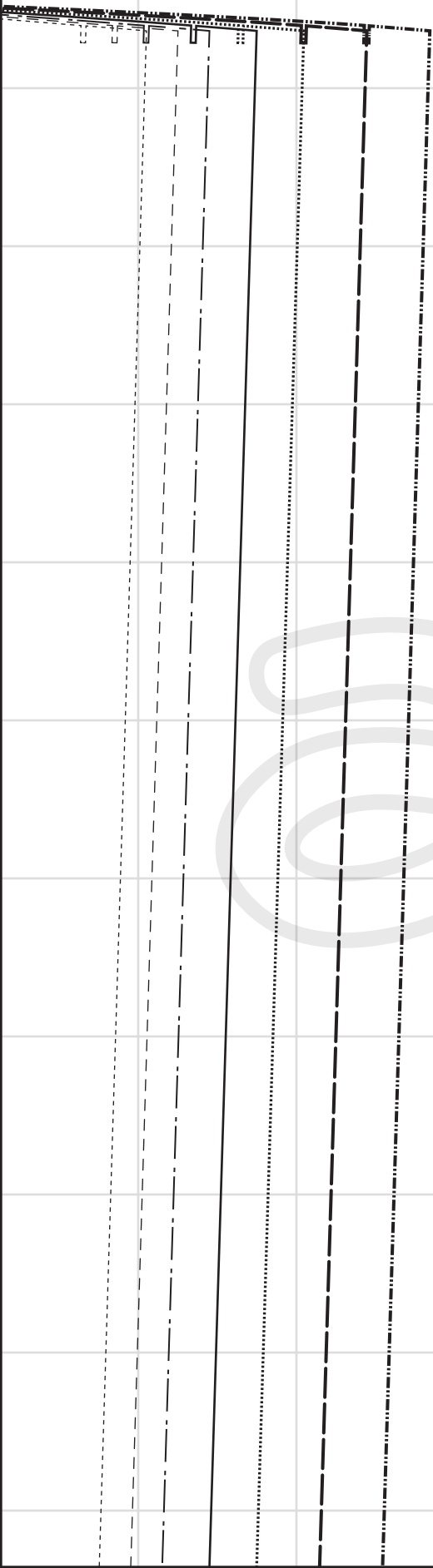
Sizes **XXS-XXL**

Hem all



Cut on this line

Cut on this line

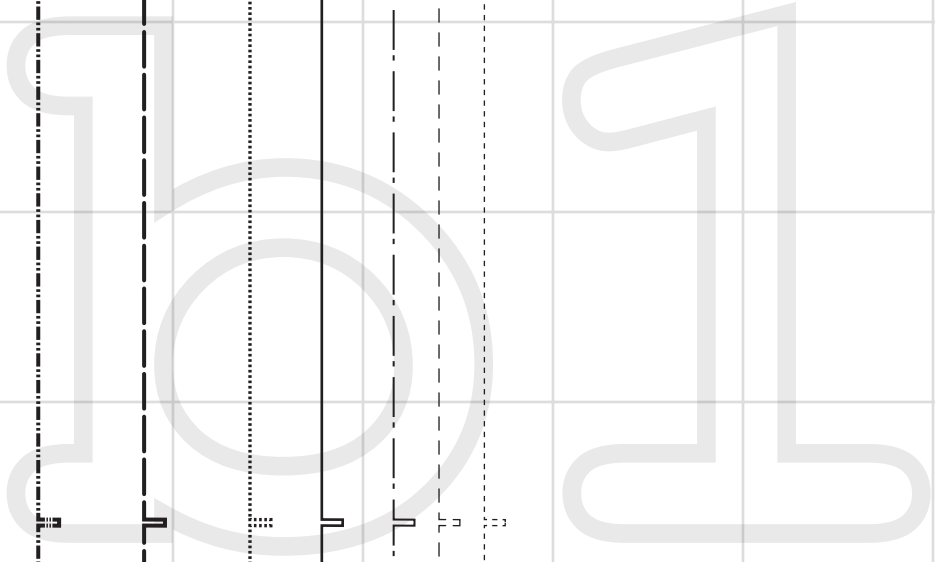


Cut on this line

Cut on this line

KEY

Cut on this line



Elastic length
Cut x1 knitted elastic (width 4 cm)



Grainline

Cut on this line

Cut on this line

SIZE
XXL
XX
IX
I
M
S
SX
SXX

unfettered

— - unfettered patterns —

unfetteredpatterns.wordpress.com

Model #UP1015

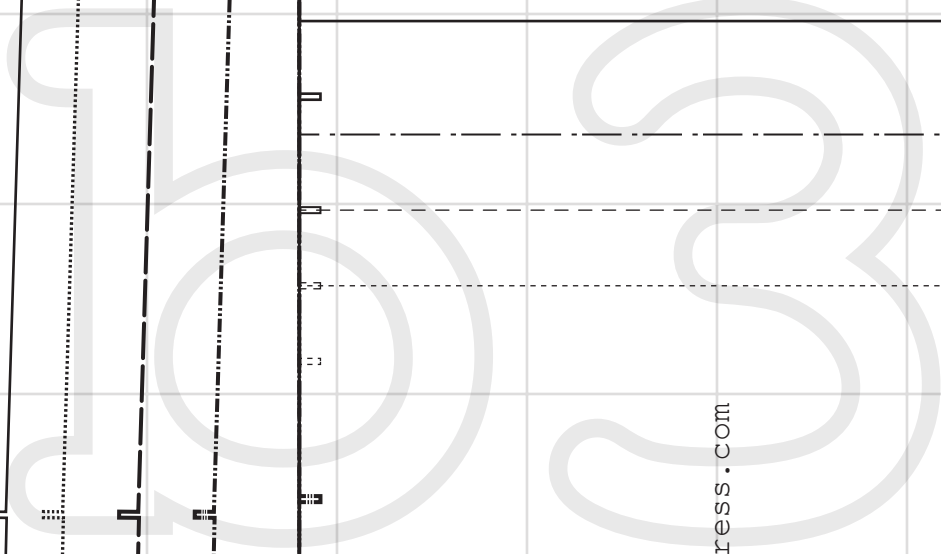
Sizes XXS-XXL

Back waist

Cut x1 fabric

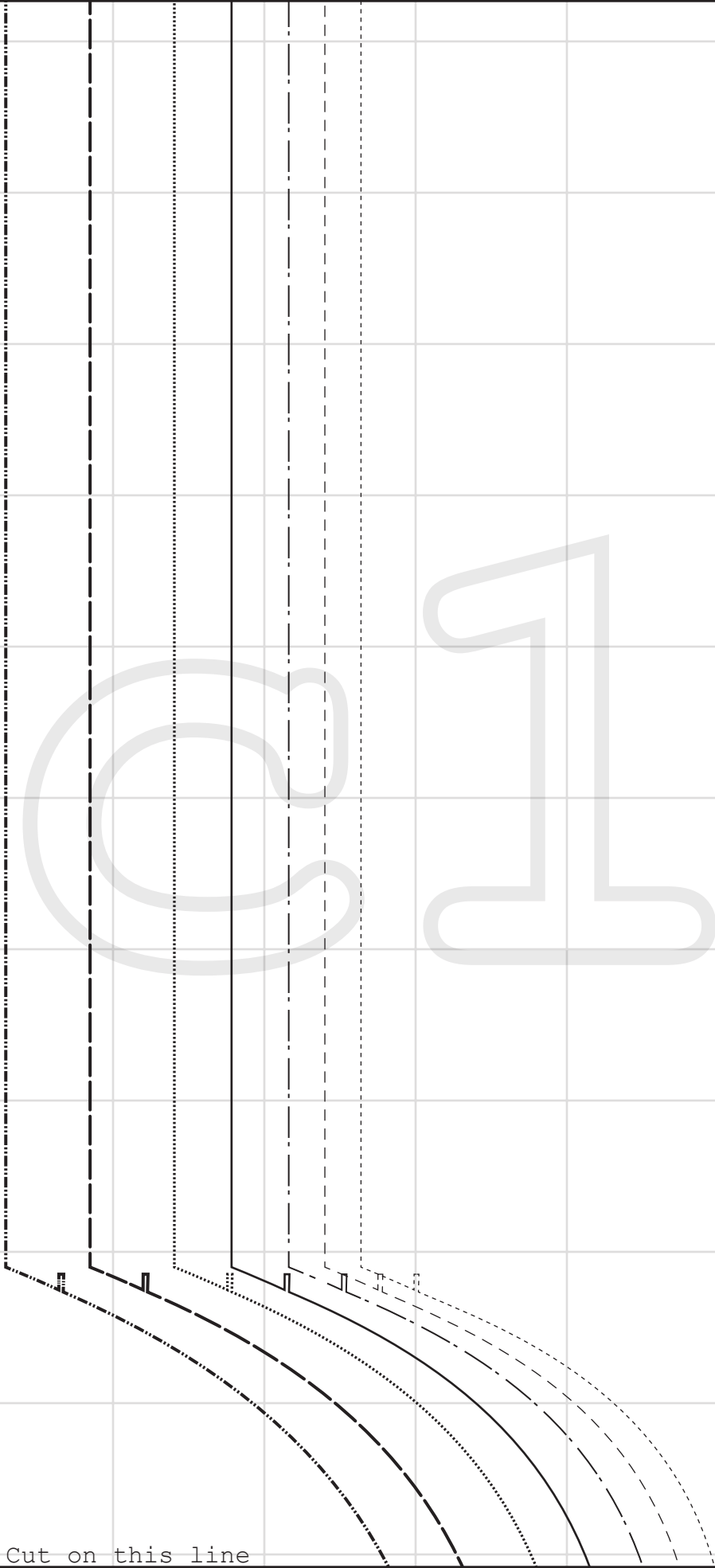
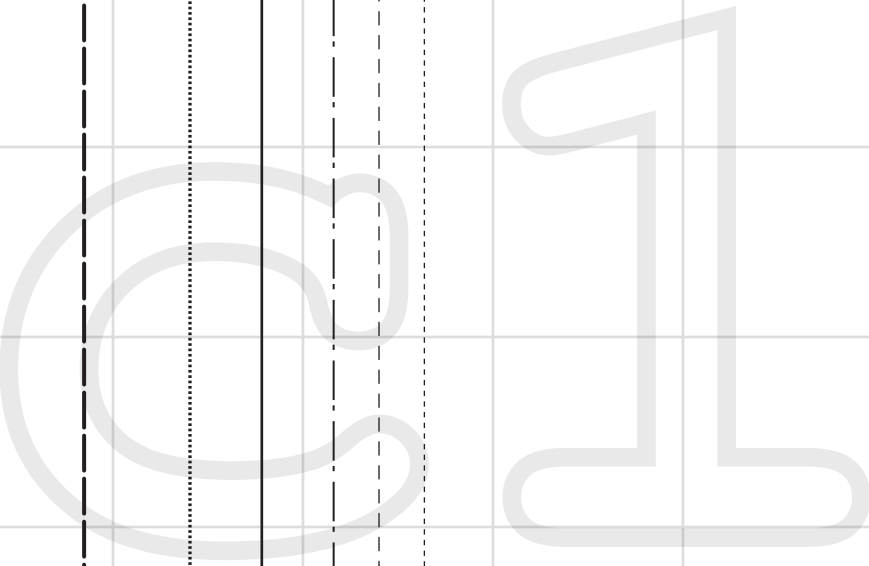
Grainline

Cut on this line



Cut on this line

Cut on this line



Cut on this line

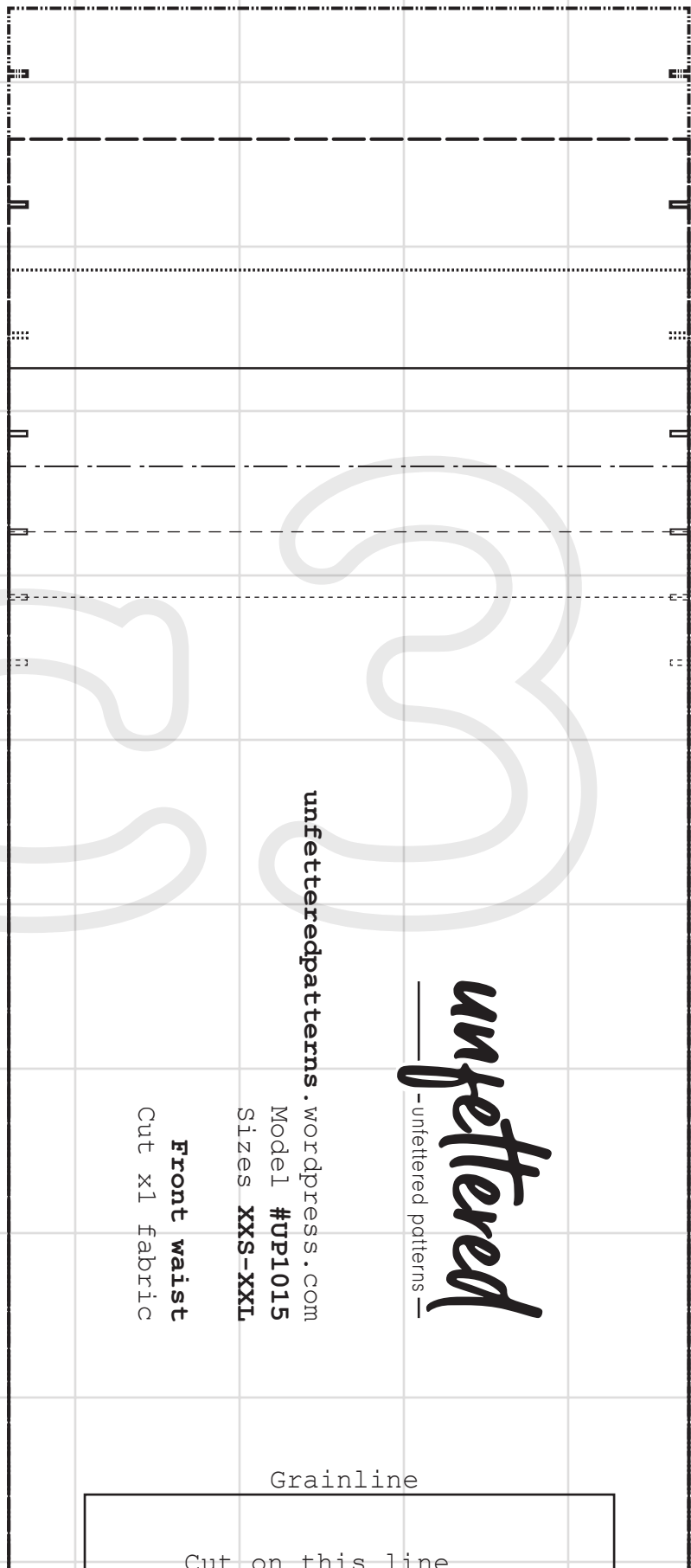
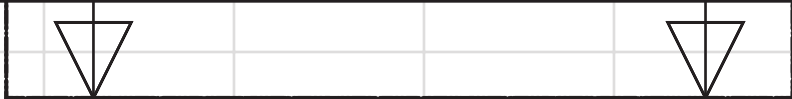
Front
Cut x2 fabric

Sizes **XXS-XXL**
Model #UP1015

unfetteredpatterns.wordpress.com

unfettered
—unfettered patterns—

Cut on this line



unfettered
—unfettered patterns—

unfetteredpatterns.wordpress.com

Model #UP1015

Sizes **XXS-XXL**

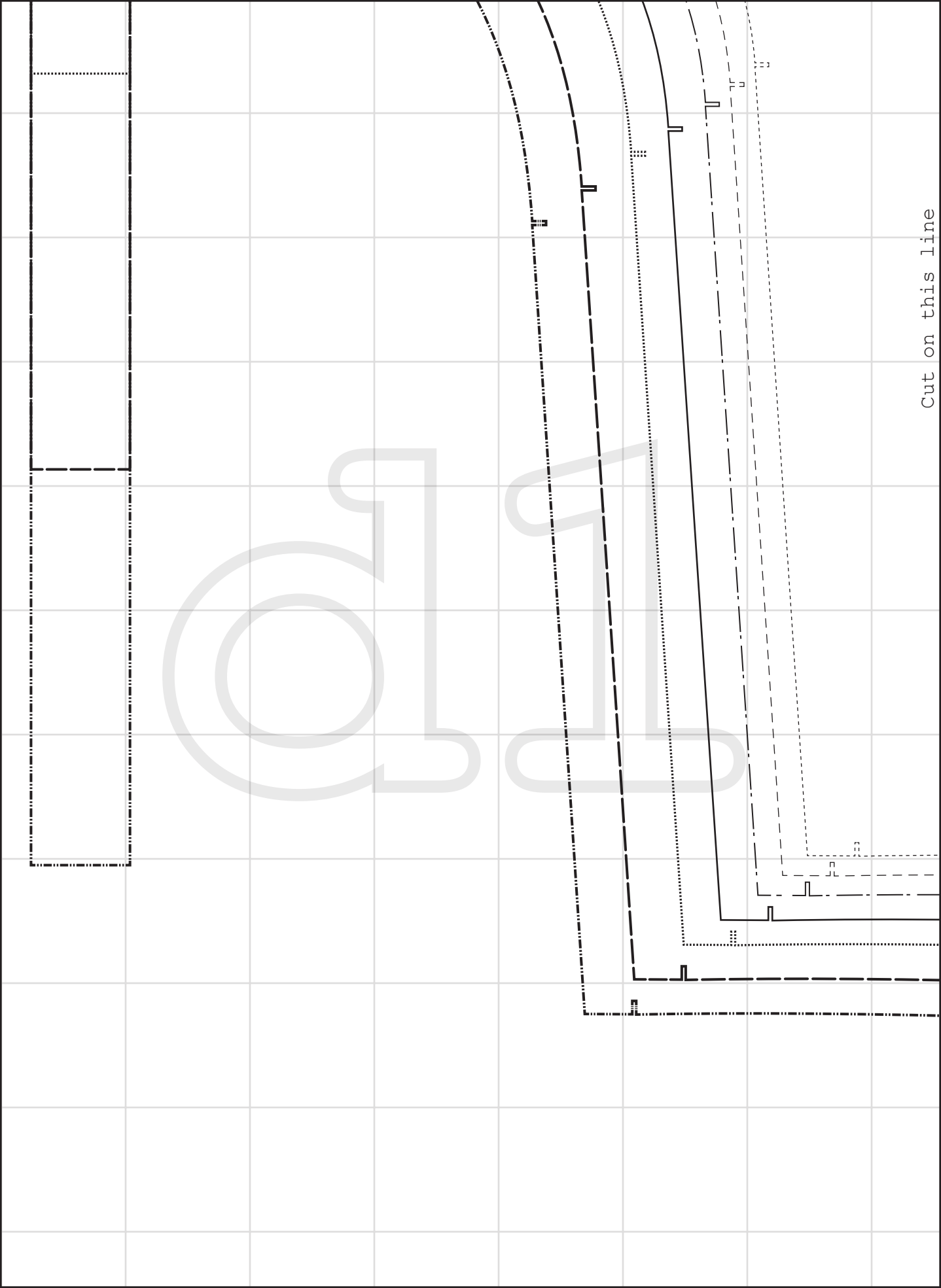
Front waist

Cut x1 fabric

Grainline

Cut on this line



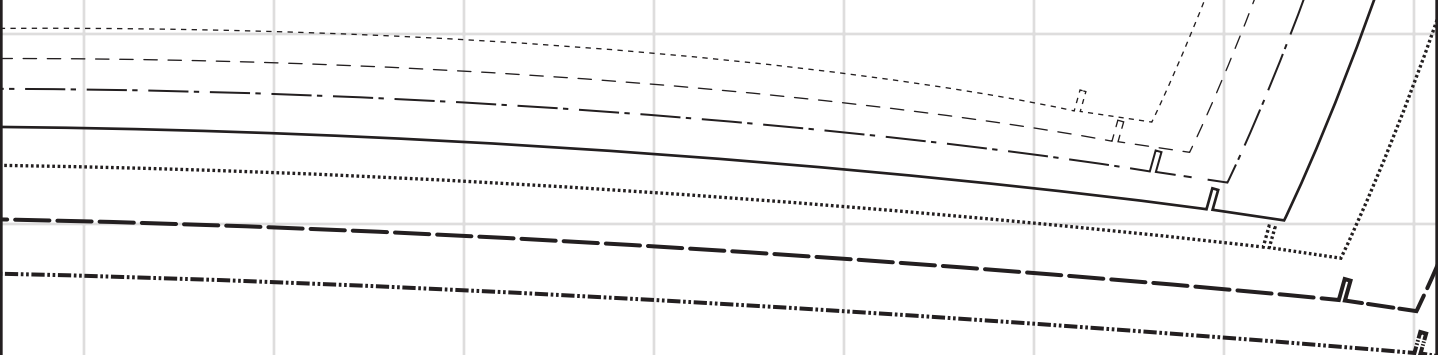


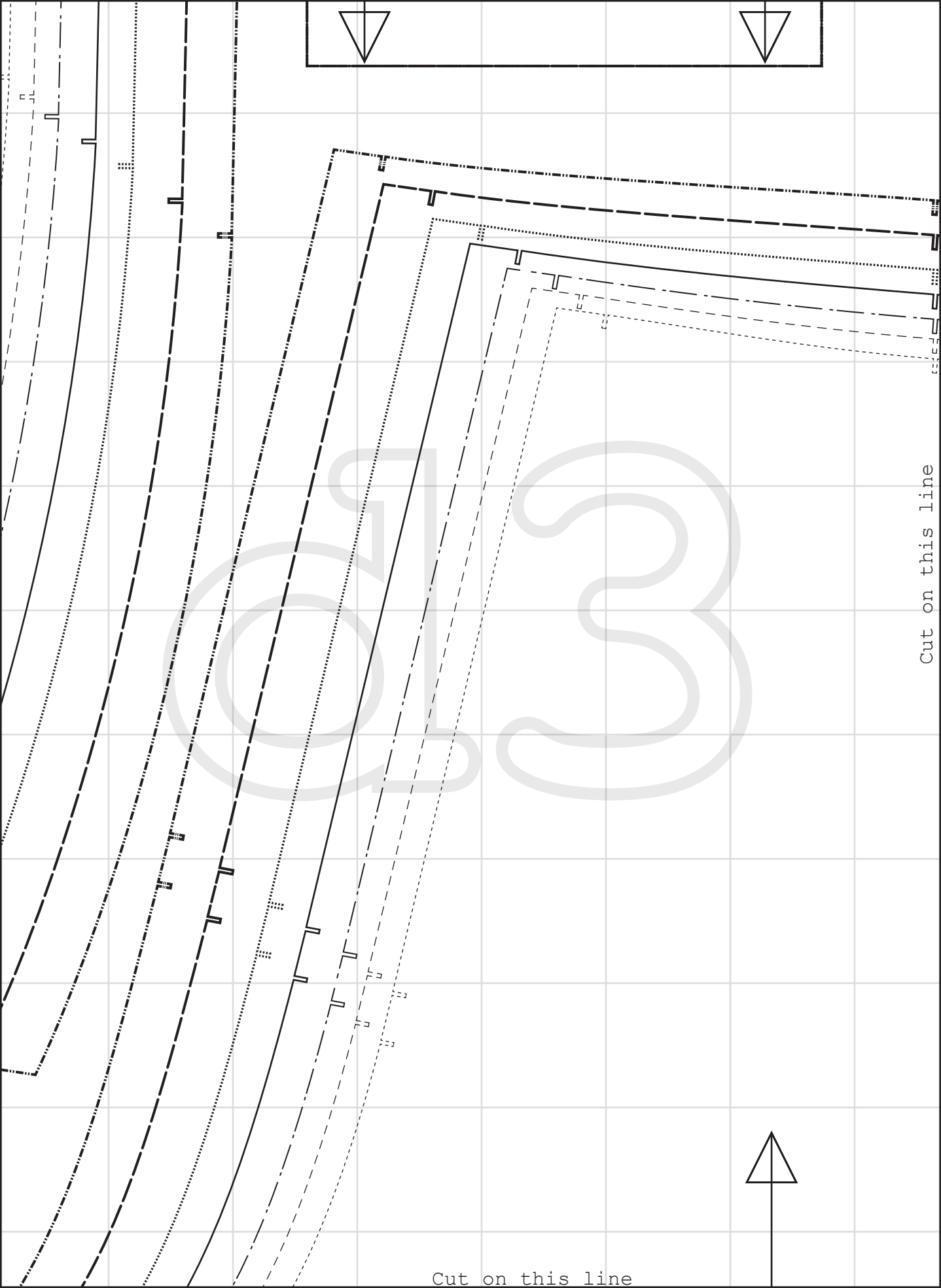
Cut on this line



Cut on this line

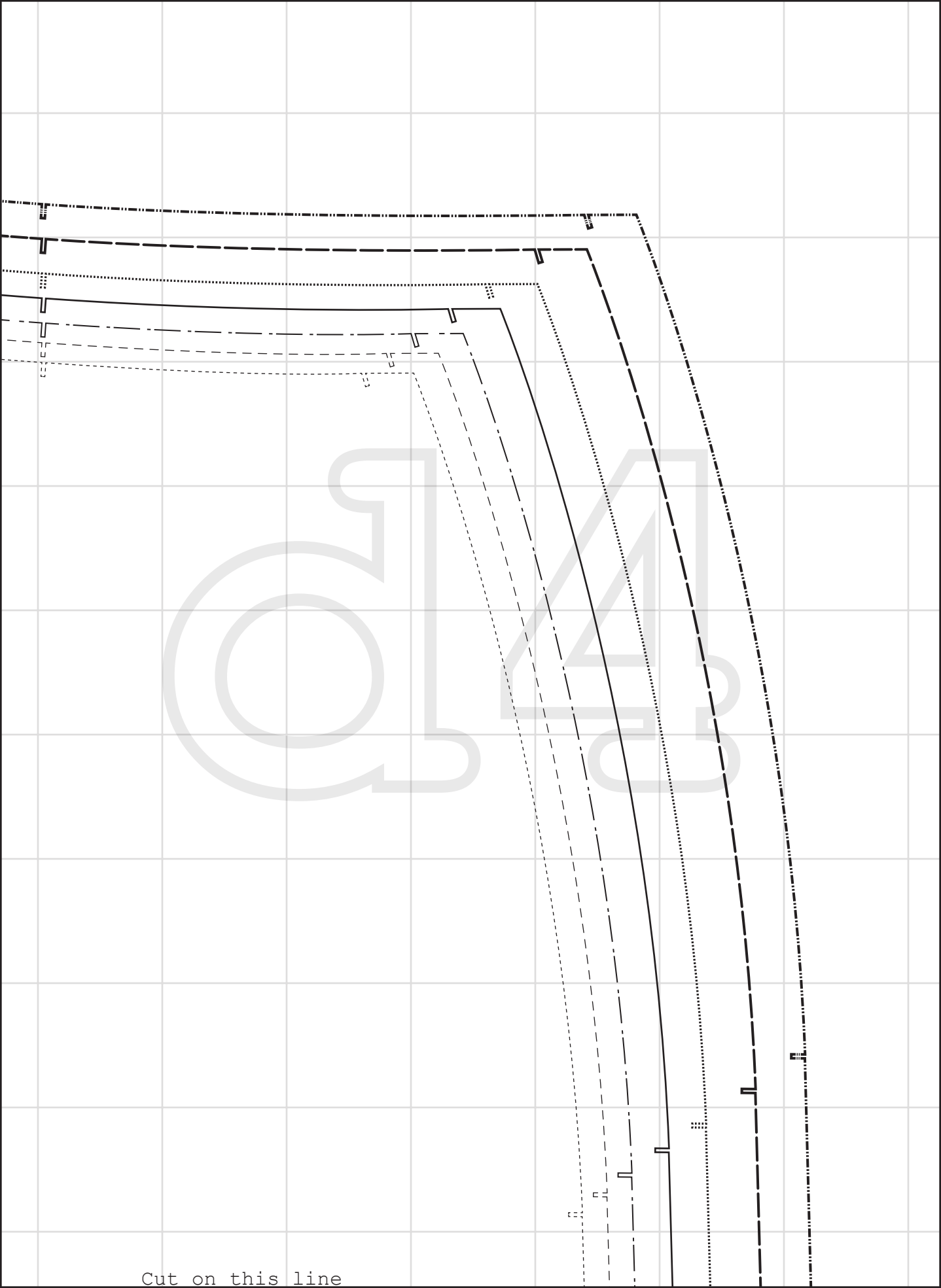
Cut on this line



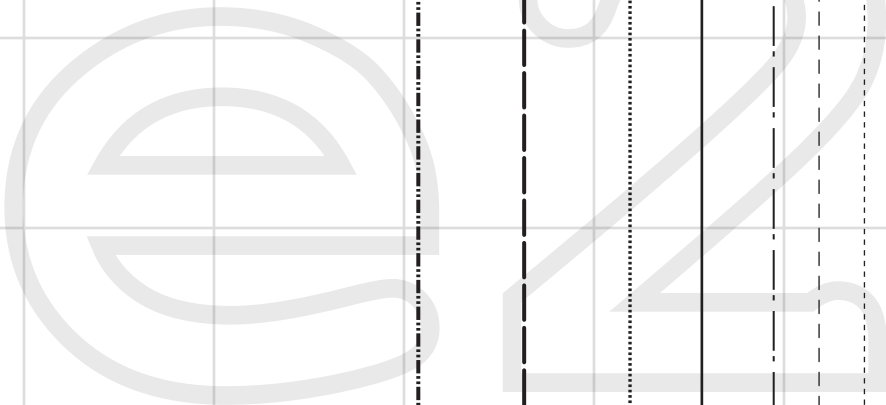


Cut on this line

Cut on this line

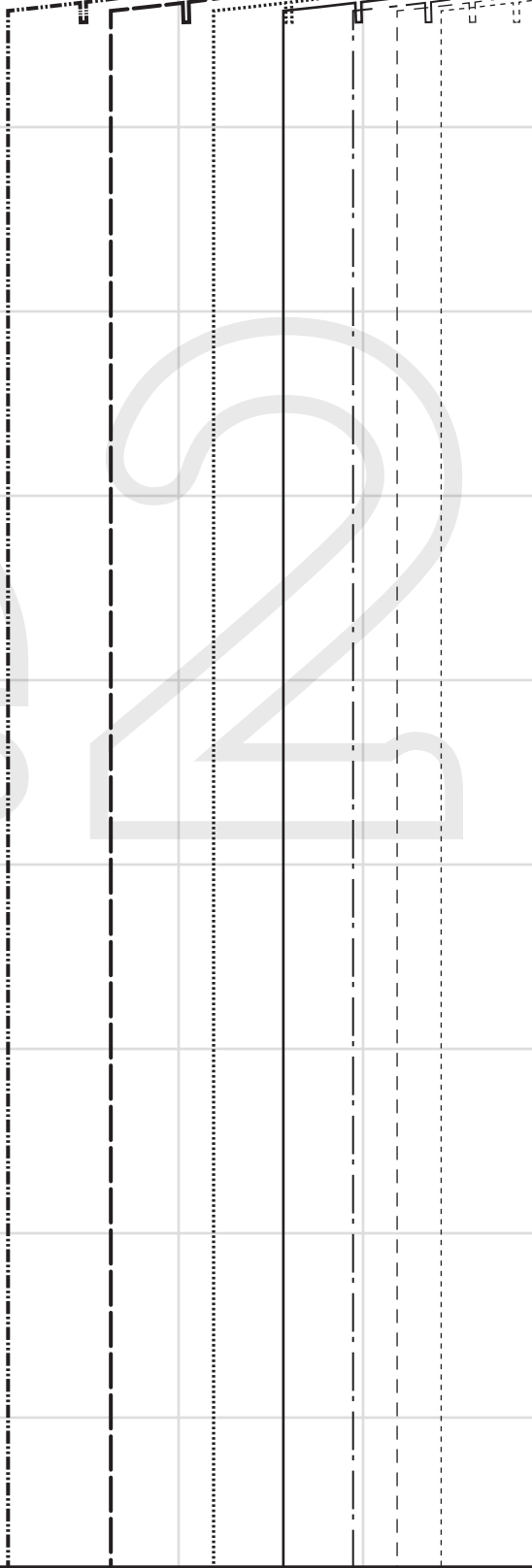


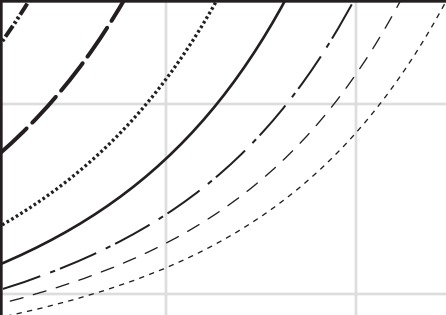
Cut on this line



Cut on this line

Cut on this line





Cut on this line

SIZE KEY

- XXL ---
- XL ---
- L ---
- M ---
- S ---
- XS ---
- XXS ---



UN

unfet
Model
Sizes

Back
Cut x

Cut on this line



fettered
— unfettered patterns —

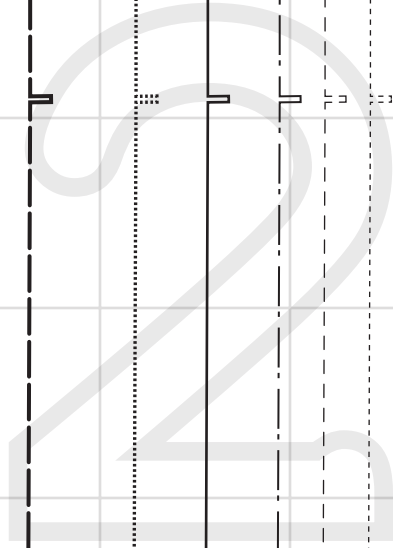
fetteredpatterns.wordpress.com

#UP1015

XXS-XXL

2 fabric

Cut on this line



Cut on this line

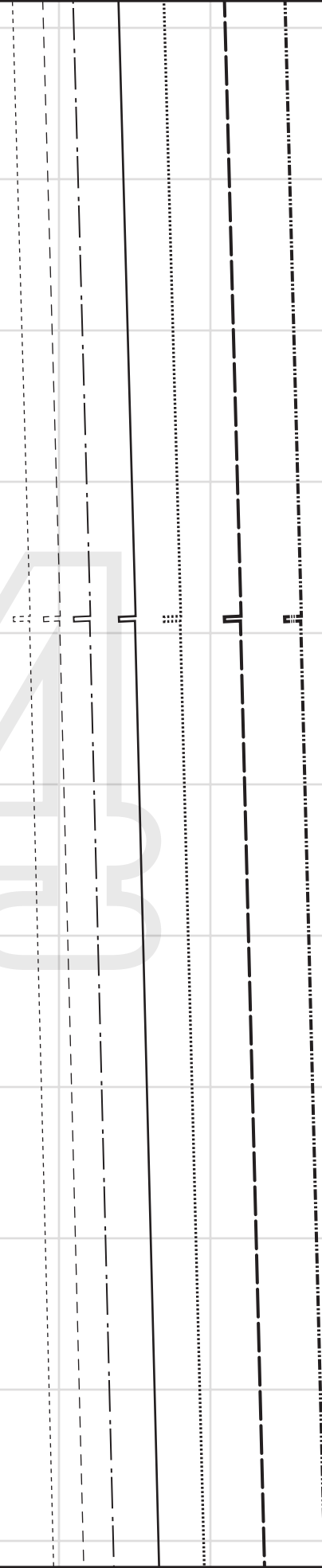
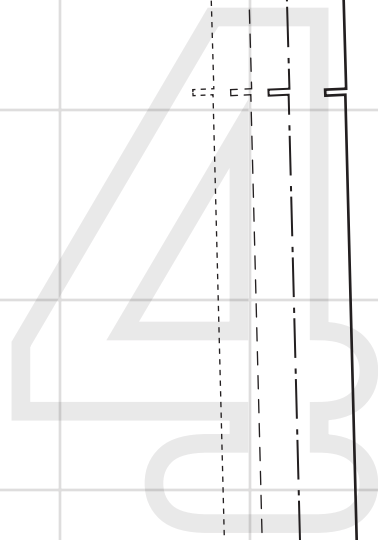
Cut on this line

Cut on this line

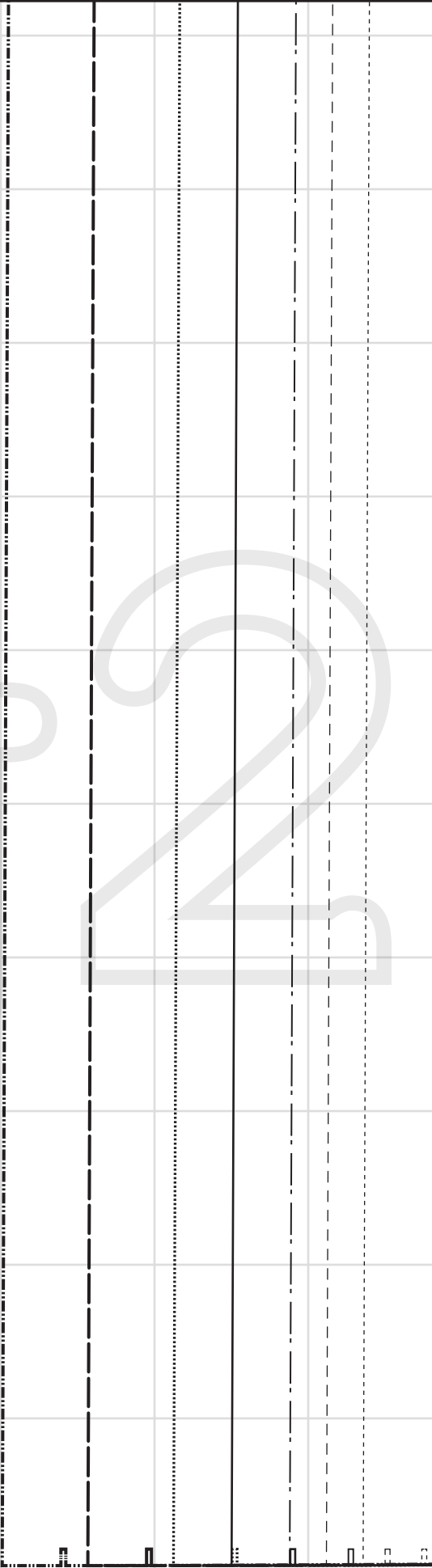
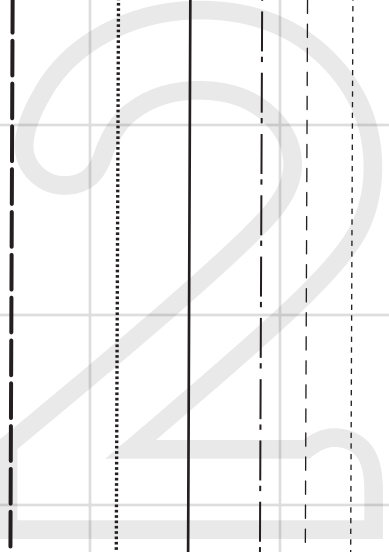
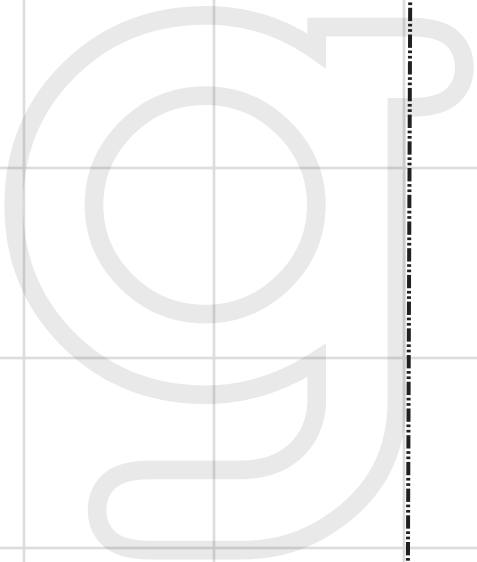


Grainline

Cut on this line



Cut on this line



Cut on this line



Hem allowance 3 cm

Cut on this line

94

