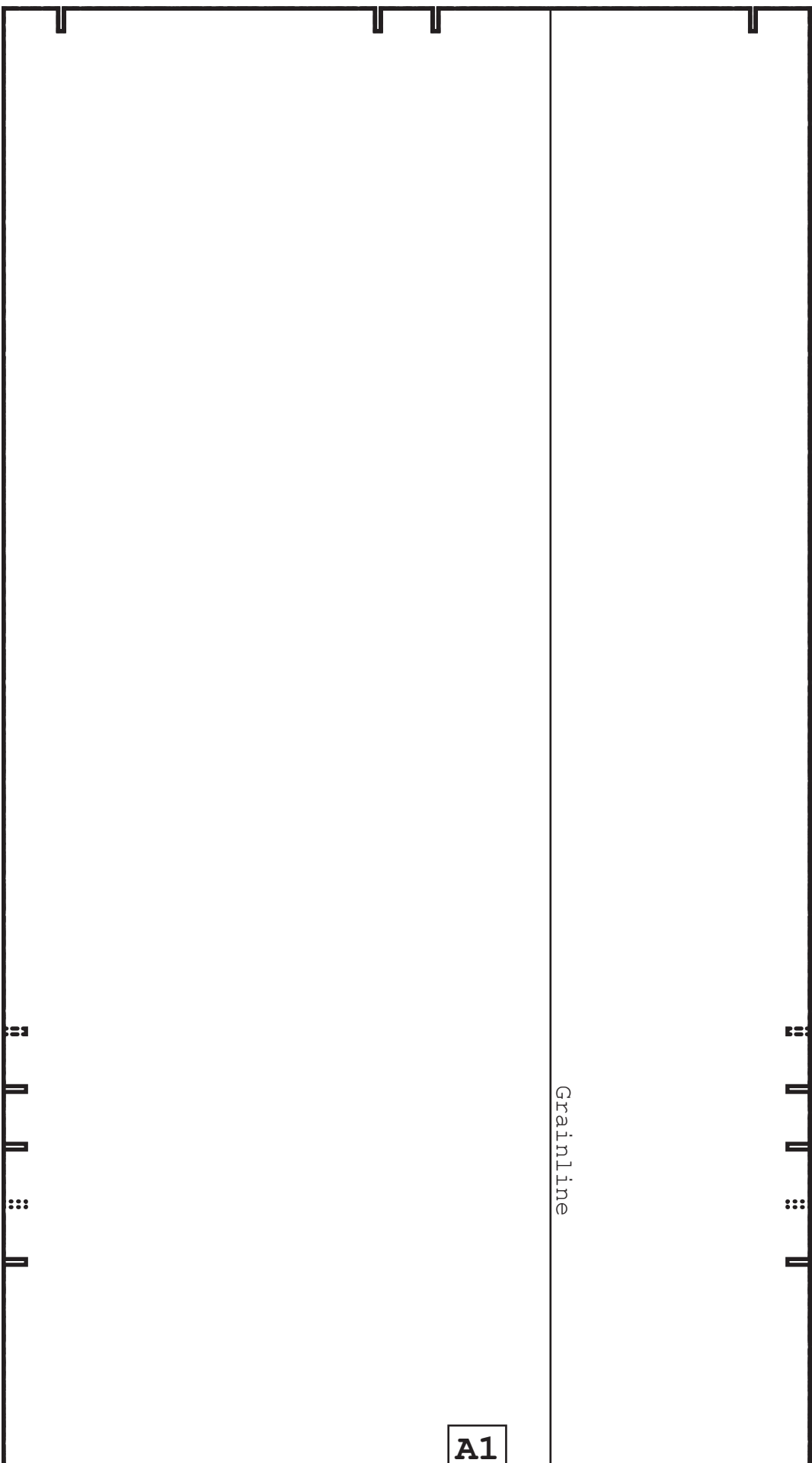
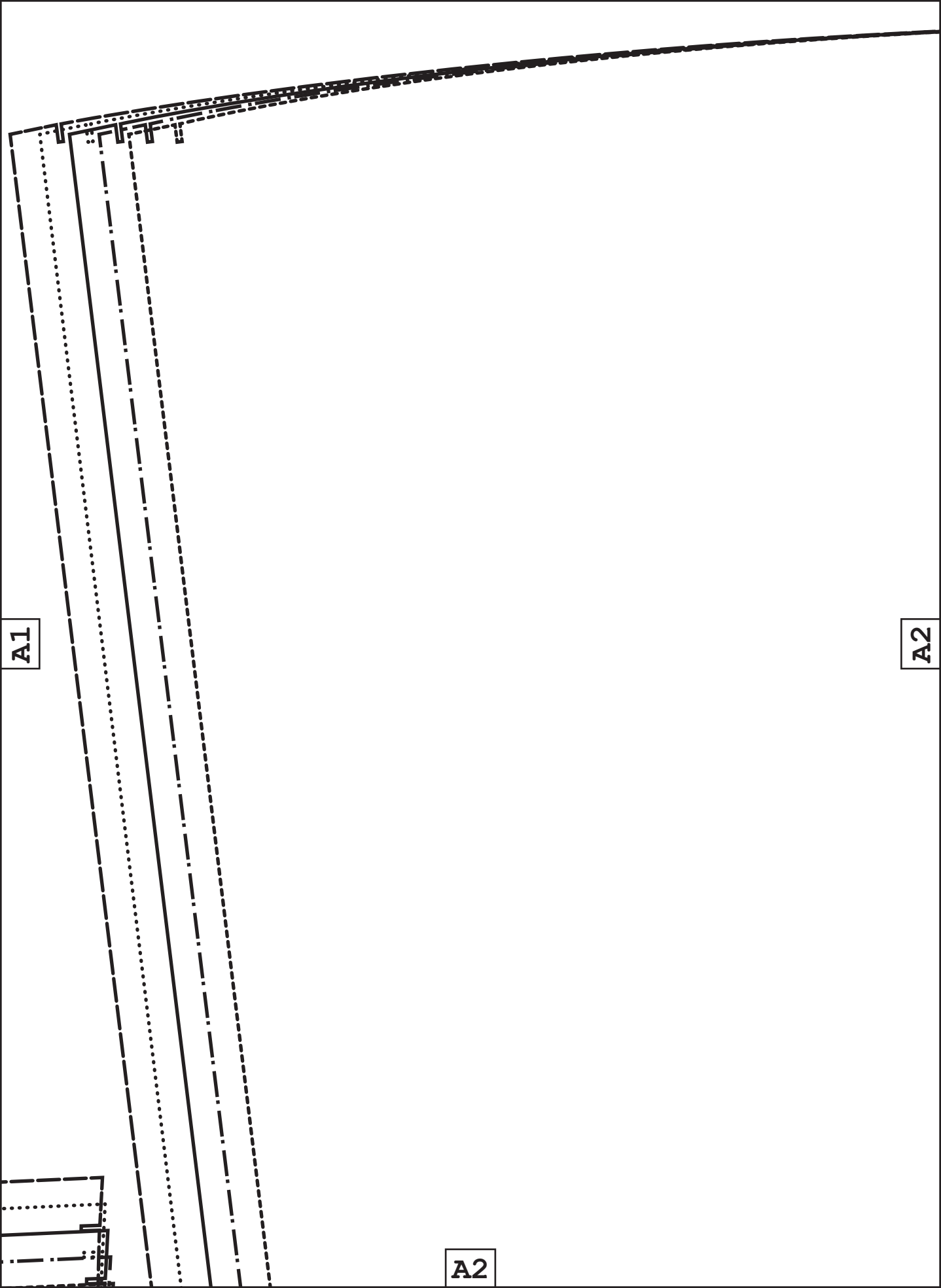


A1

Grainline

A1



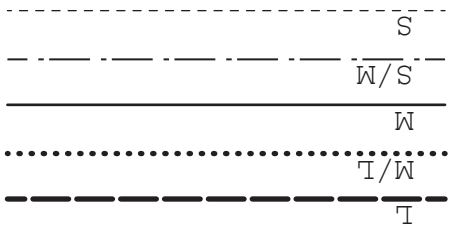


A1

A2

A2

Hem allowance 1 cm (3/8")



SIZE KEY

Grainline

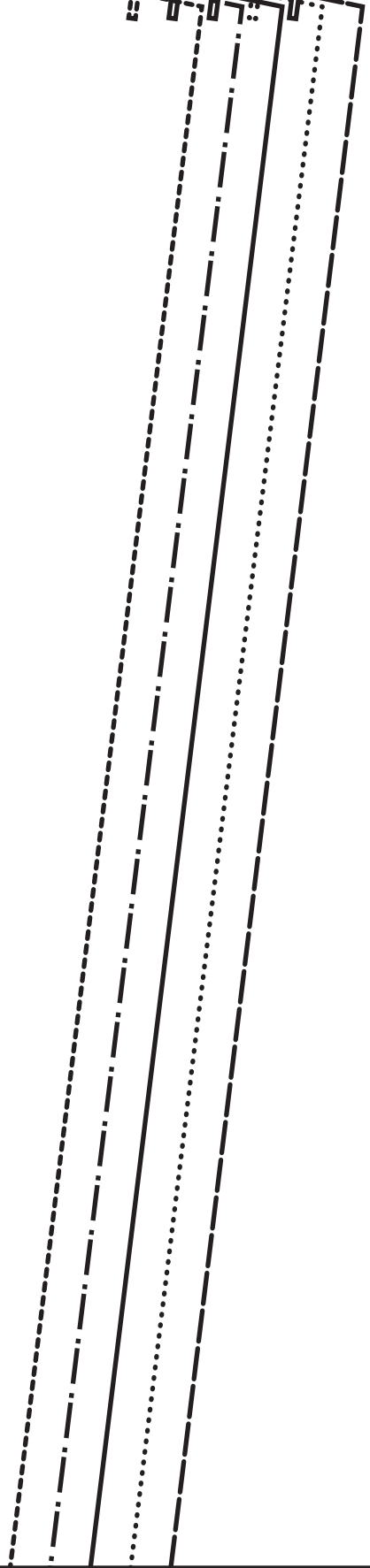
A2

A3

A3

A3

A4



**Front facing**

Cut x2 fabric

Cut x2 interfacing

**B1**



**A1**

*unfettered*  
— unfettered

**unfetteredpat**

Model #UP1029

Sizes S-L

**Belt**

Cut x2 fabric

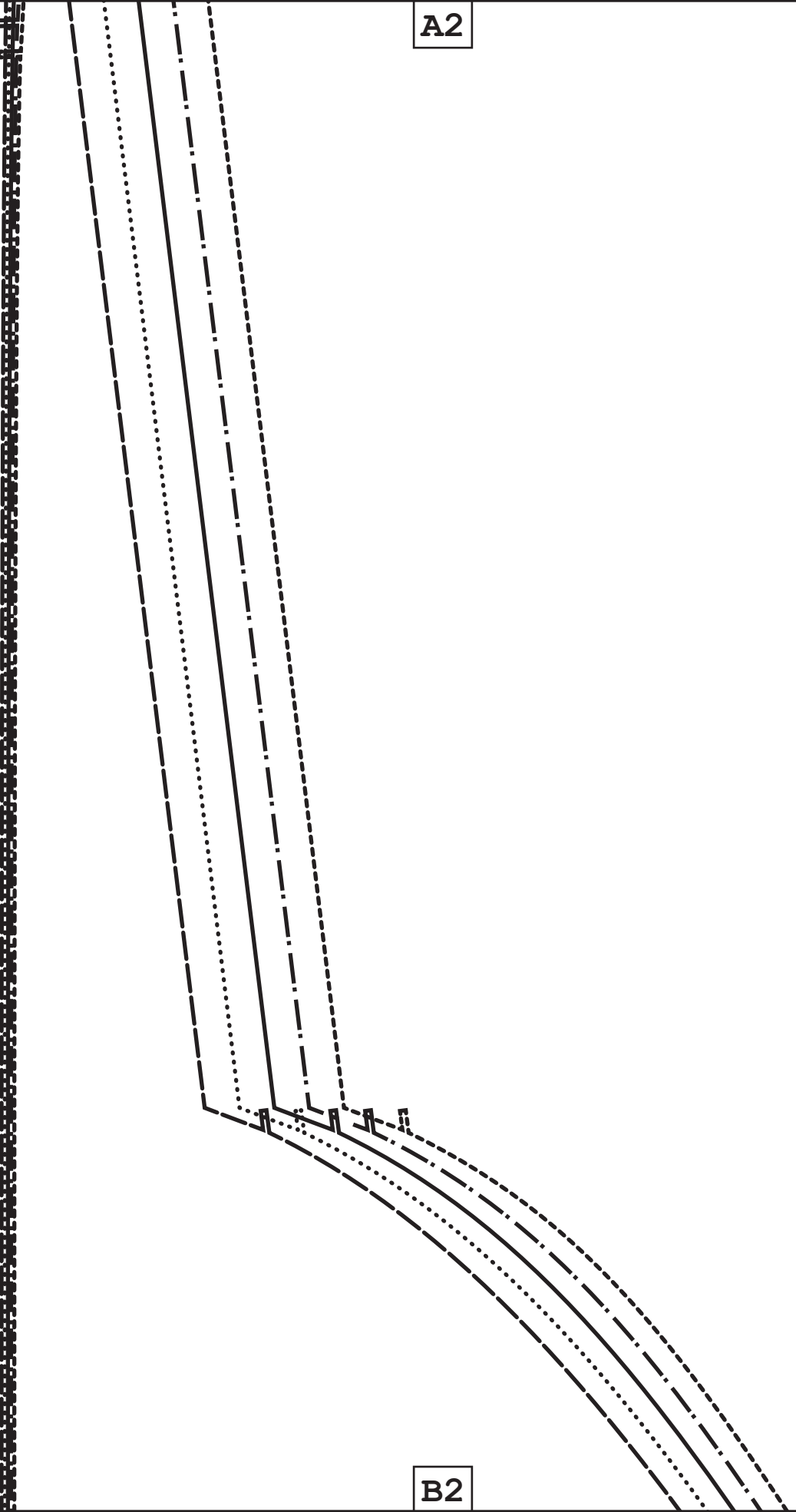
**B1**



B2

A2

B2



B1

unfetteredpatterns.wordpress.com  
Model #UP1029  
Sizes S-L

A3

Cut x2 fabric

Sleeve

Sizes S-L

Model #UP1029

unfetteredpatterns.wordpress.com



B3

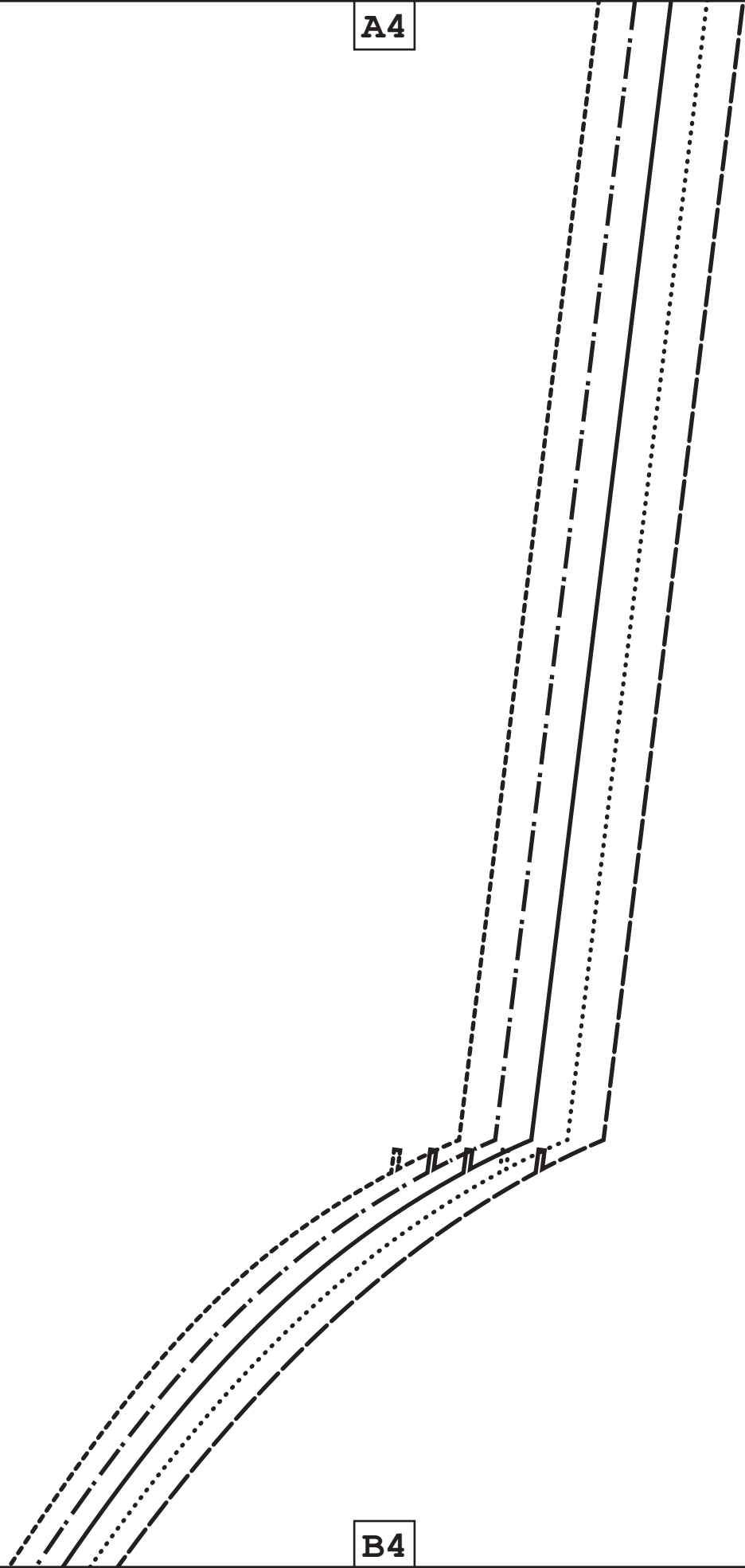
B3

B2

A4

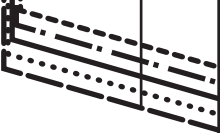
B3

B4

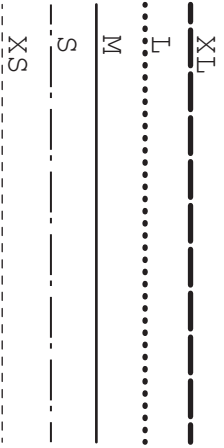




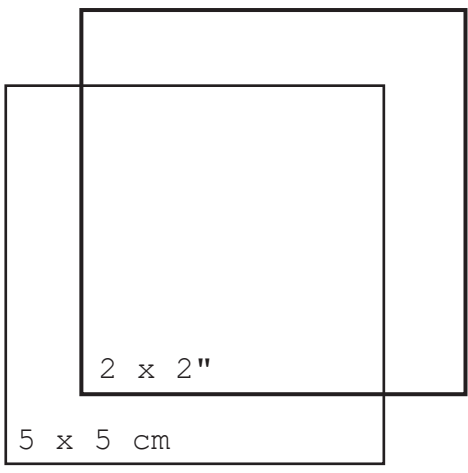
Center back



SIZE KEY



B2



C1

C2

SIZE KEY

XL 

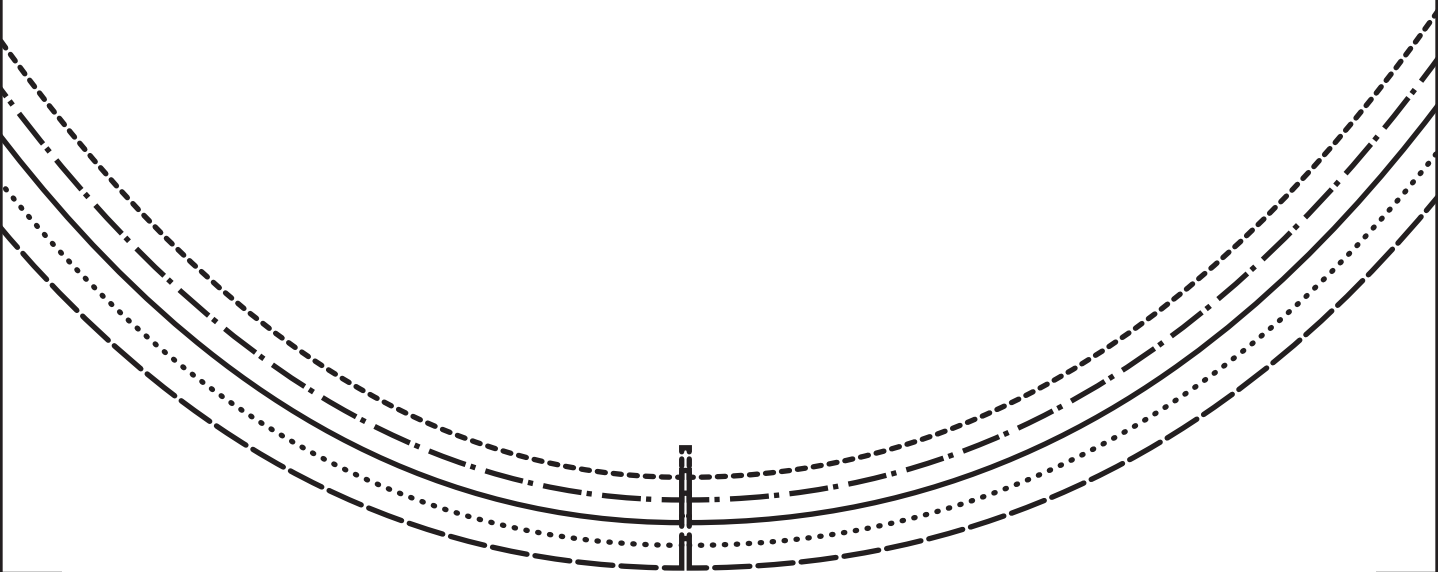
L 

M 

S 

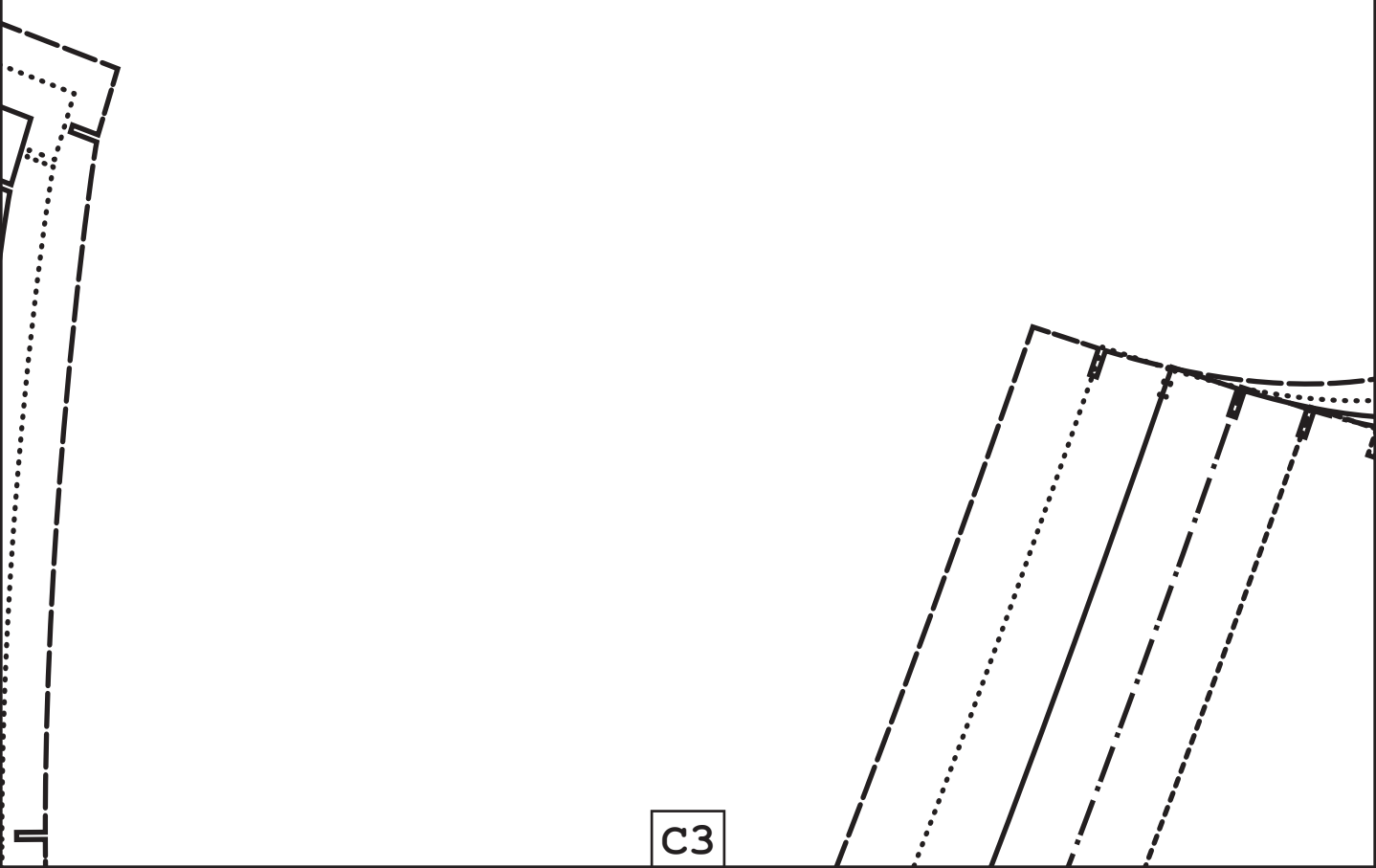
C2

B3



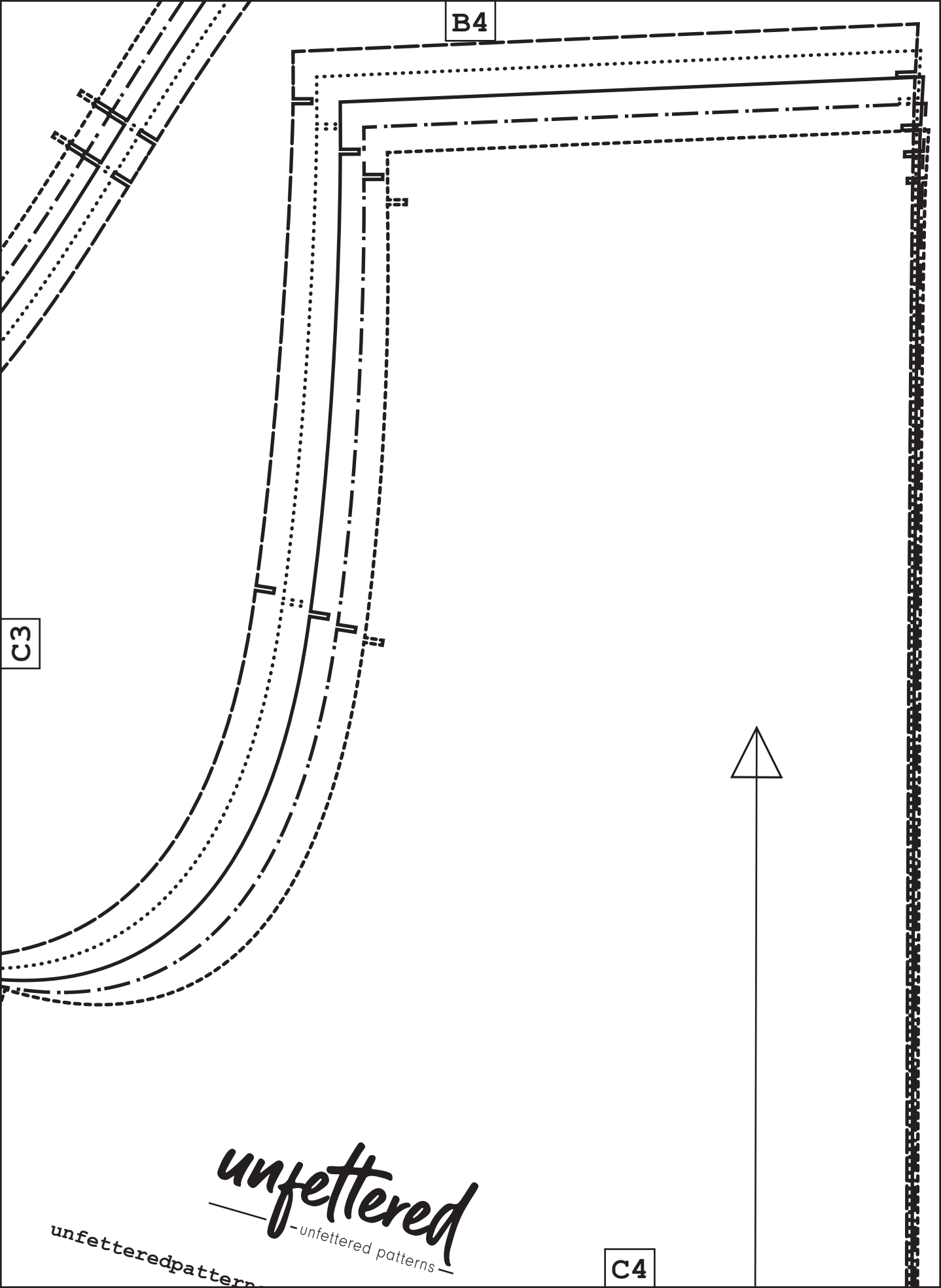
C2

C3



C3

B4



C3

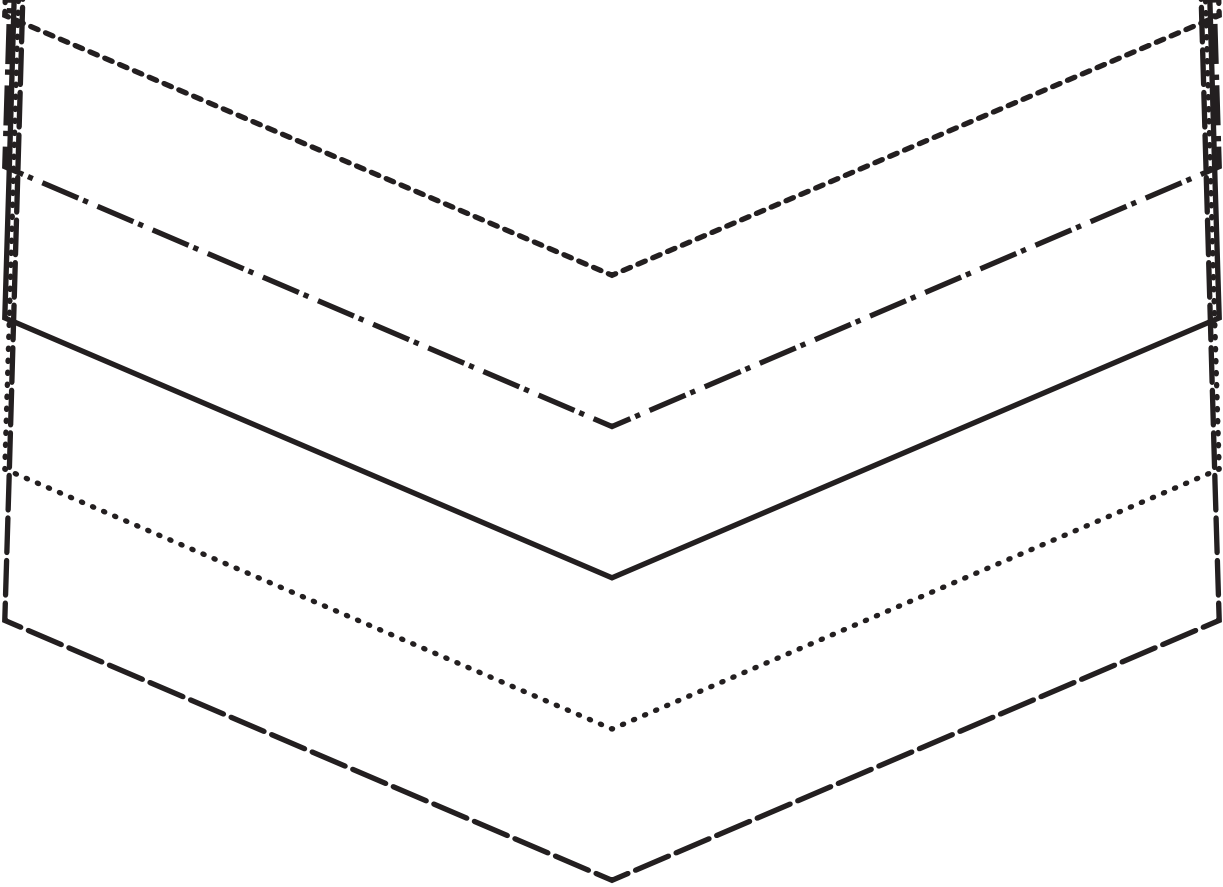
*unfettered*  
— unfettered patterns —

unfetteredpatterns

C4



C1



D1



C2

XS

on the fold of the fabric

Cut this edge

*unfettered*  
— unfettered patterns —

[unfetteredpatterns.wordpress.com](http://unfetteredpatterns.wordpress.com)

Model #UP1029

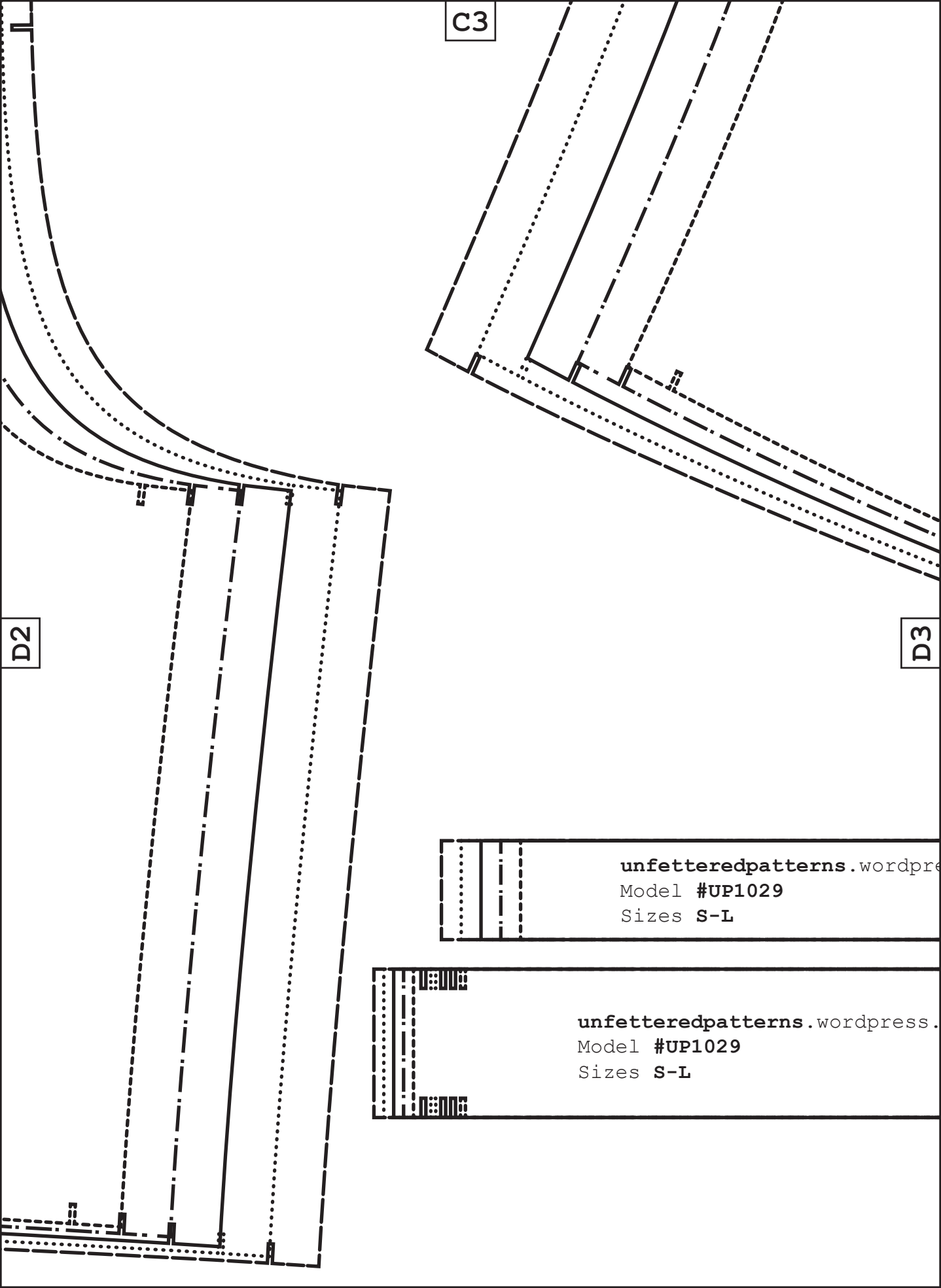
Sizes S-L

**Back**

Cut x1 fabric

D2

D1



C3

D2

D3

`unfetteredpatterns.wordpress.com`  
Model #UP1029  
Sizes S-L

`unfetteredpatterns.wordpress.com`  
Model #UP1029  
Sizes S-L

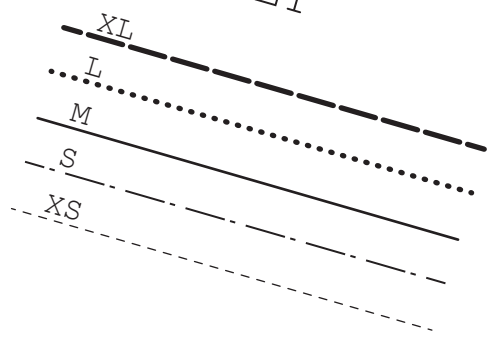
WordPress.com  
Model #UP1029  
Sizes S-L

C4

**Front**  
Cut x2 fabric

Grainline

### SIZE KEY



D3

WordPress.com

**Elastic length**  
Cut x2 knitted elastic  
1 cm (3/8") wide

WordPress.com

**Back neck tape**  
Cut x1 fabric

Grainline