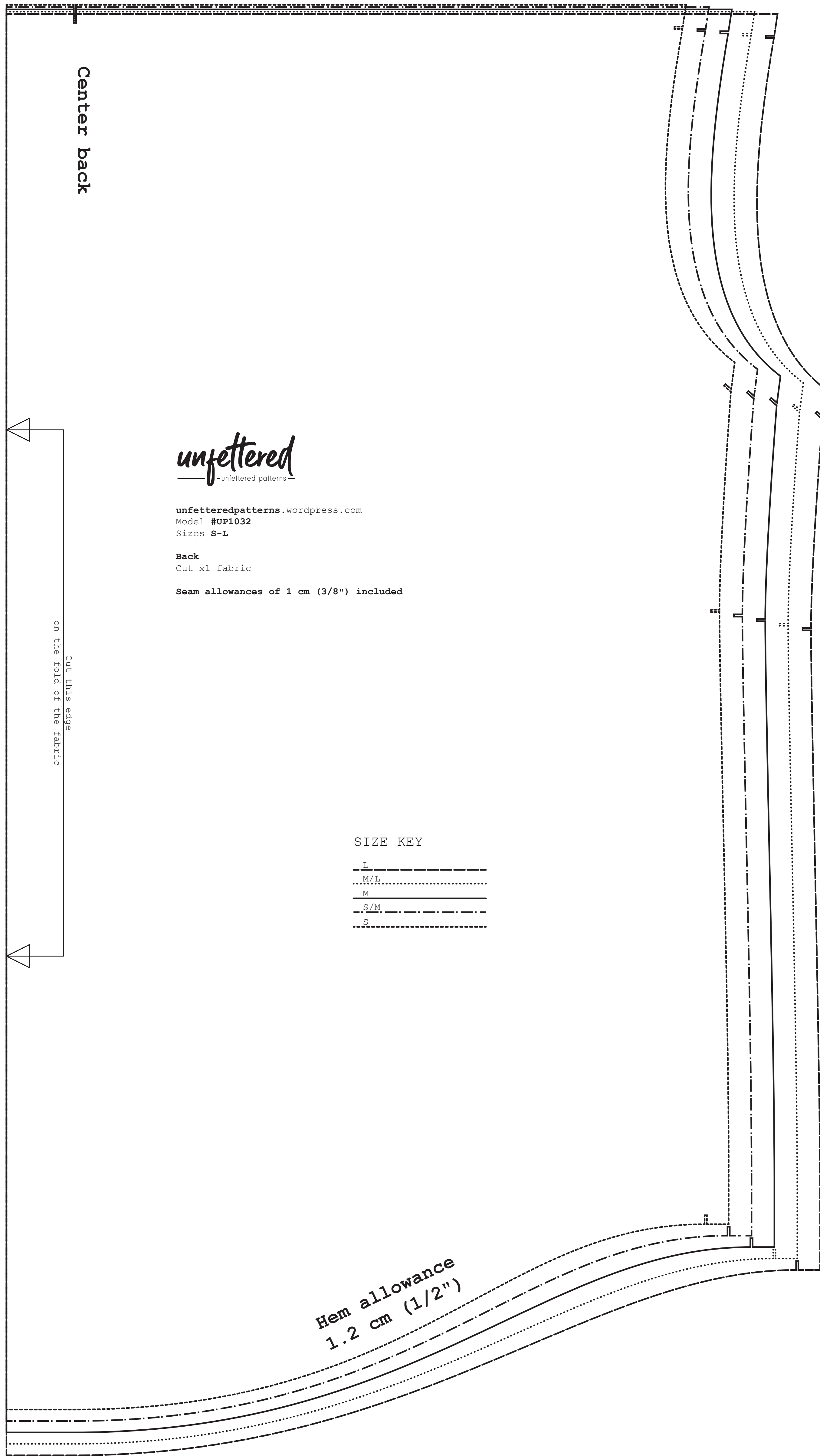


**unfettered**  
—unfettered patterns—

unfetteredpatterns.wordpress.com  
Model #UP1032  
Sizes S-L  
**Back yoke**  
Cut x1 fabric  
Seam allowances of 1 cm (3/8") included

Center back  
Cut this edge  
on the fold of the fabric



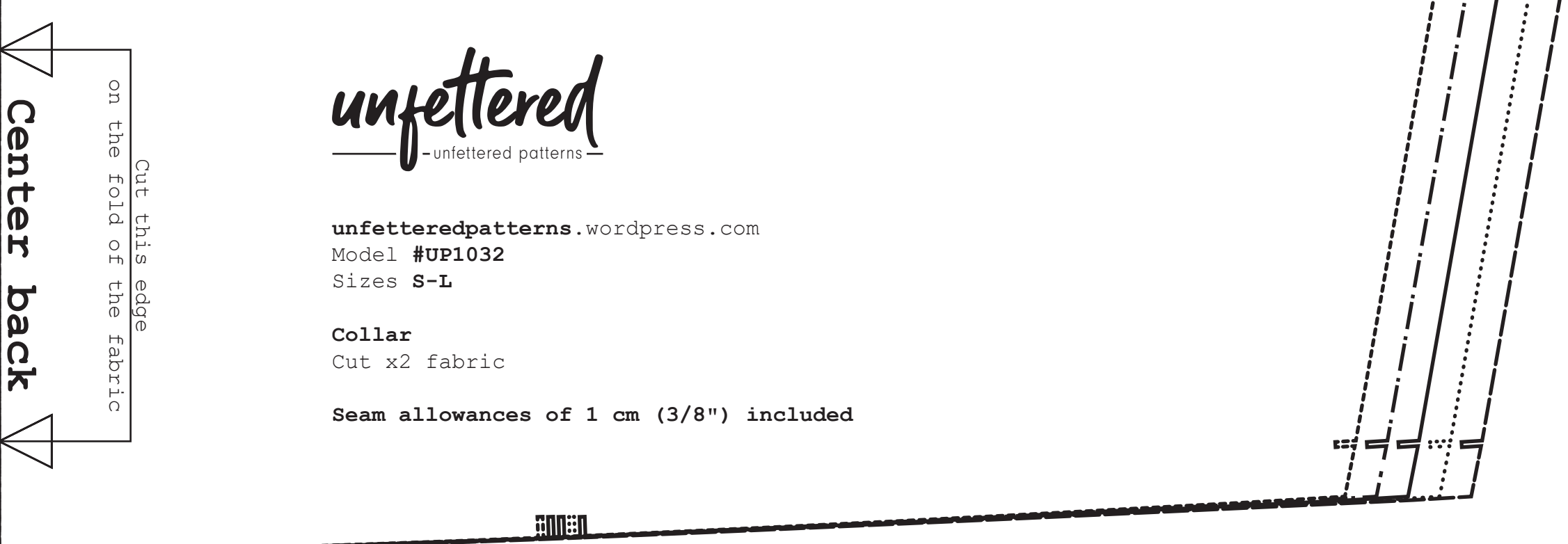
**unfettered**  
—unfettered patterns—

unfetteredpatterns.wordpress.com  
Model #UP1032  
Sizes S-L  
**Back**  
Cut x1 fabric  
Seam allowances of 1 cm (3/8") included

SIZE KEY

L	-----
..W/h	-----
M	-----
..S/M	-----
S	-----

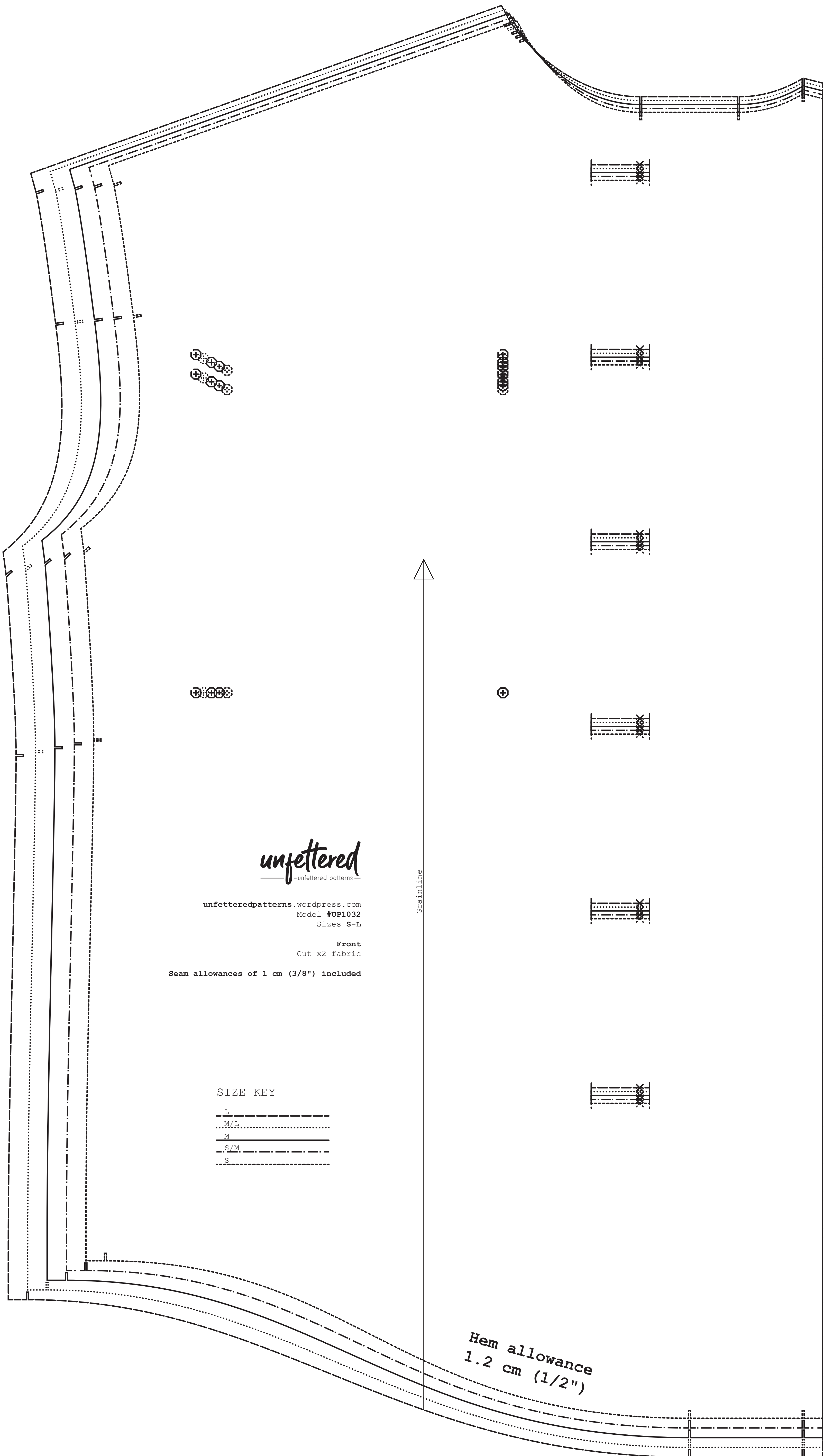
Hem allowance  
1.2 cm (1/2")



**unfettered**  
—unfettered patterns—

unfetteredpatterns.wordpress.com  
Model #UP1032  
Sizes S-L  
**Collar**  
Cut x2 fabric  
Seam allowances of 1 cm (3/8") included

Center back  
Cut this edge  
on the fold of the fabric



**unfettered**  
—unfettered patterns—

unfetteredpatterns.wordpress.com  
Model #UP1032  
Sizes S-L  
**Front**  
Cut x2 fabric  
Seam allowances of 1 cm (3/8") included

SIZE KEY

L	-----
..W/h	-----
M	-----
..S/M	-----
S	-----

Grainline

Hem allowance  
1.2 cm (1/2")

