

unfetteredpatterns.wordpress.com

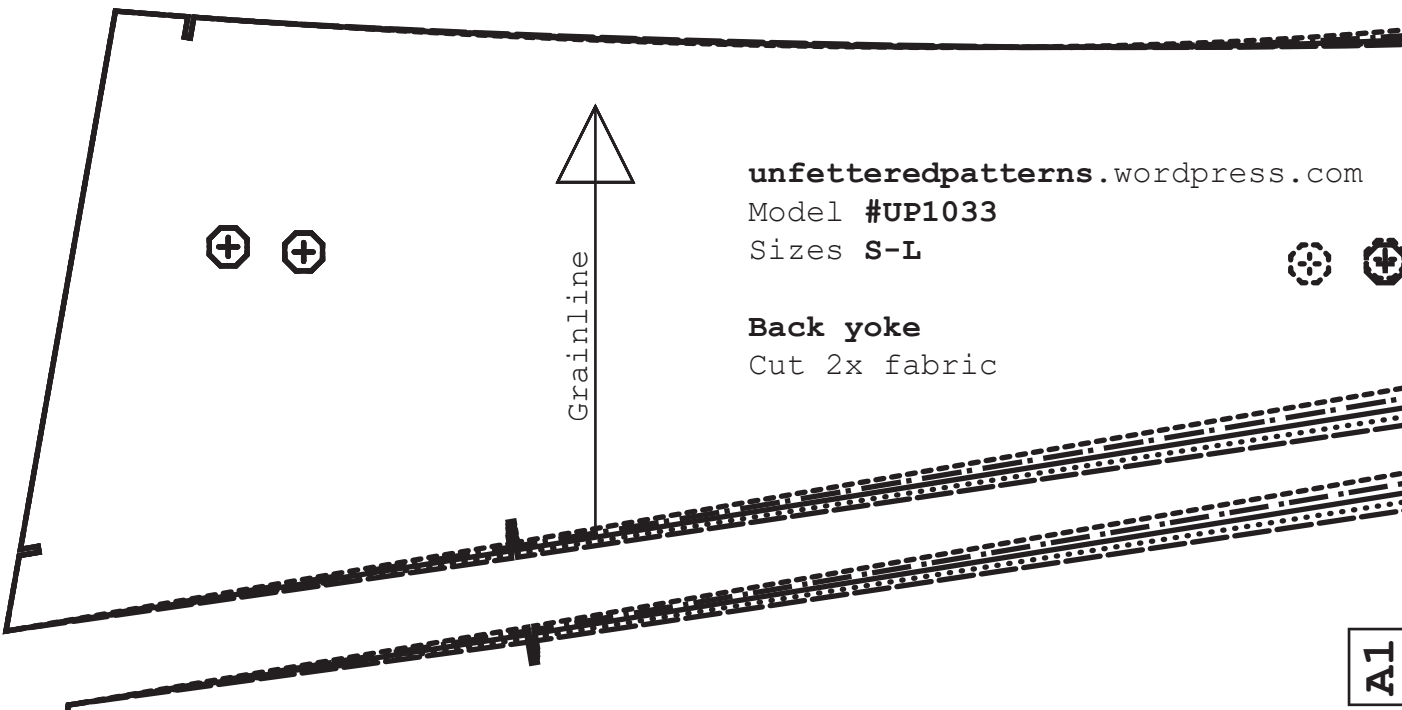
Model #UP1033

Sizes S-L

Fly shield

Cut 1x fabric

Cut 1x interfacing



unfetteredpatterns.wordpress.com

Model #UP1033

Sizes S-L

Back yoke

Cut 2x fabric

A1

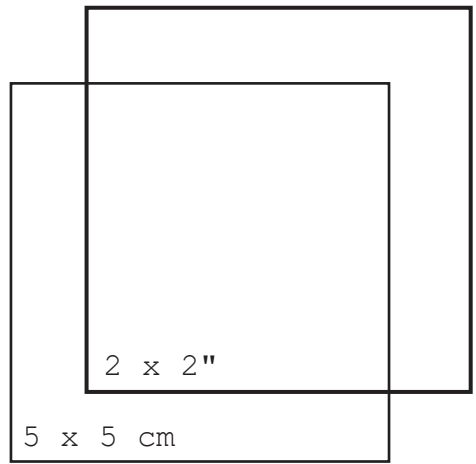
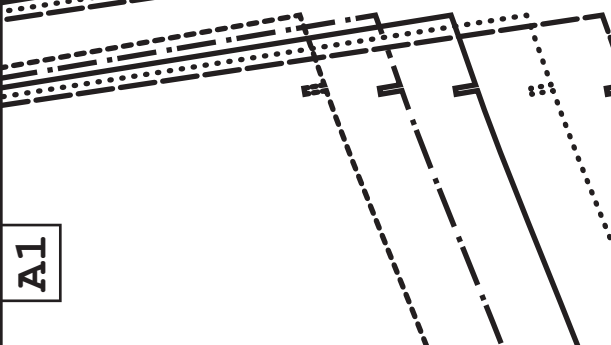
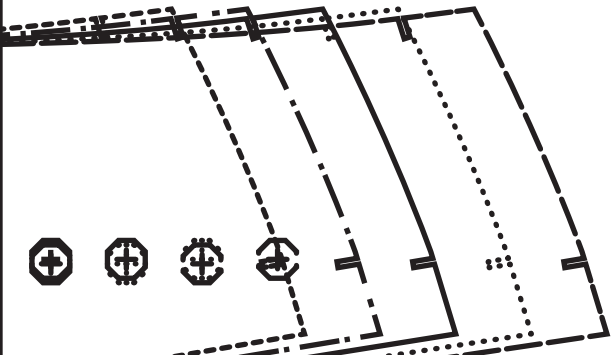
A1

patternpatterns.wordpress.com
Model #UP1033
Sizes S-L
Coin pocket
cut 1x fabric
(wrong side up)

Grainline



Hem allowance
2 cm (3/4")

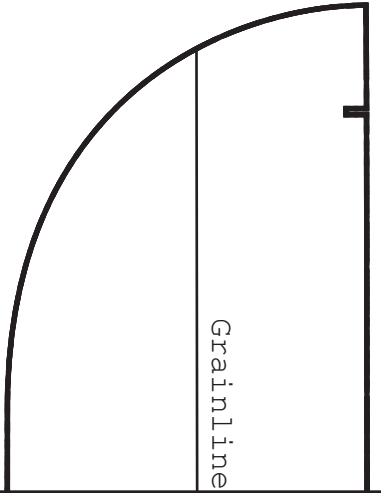


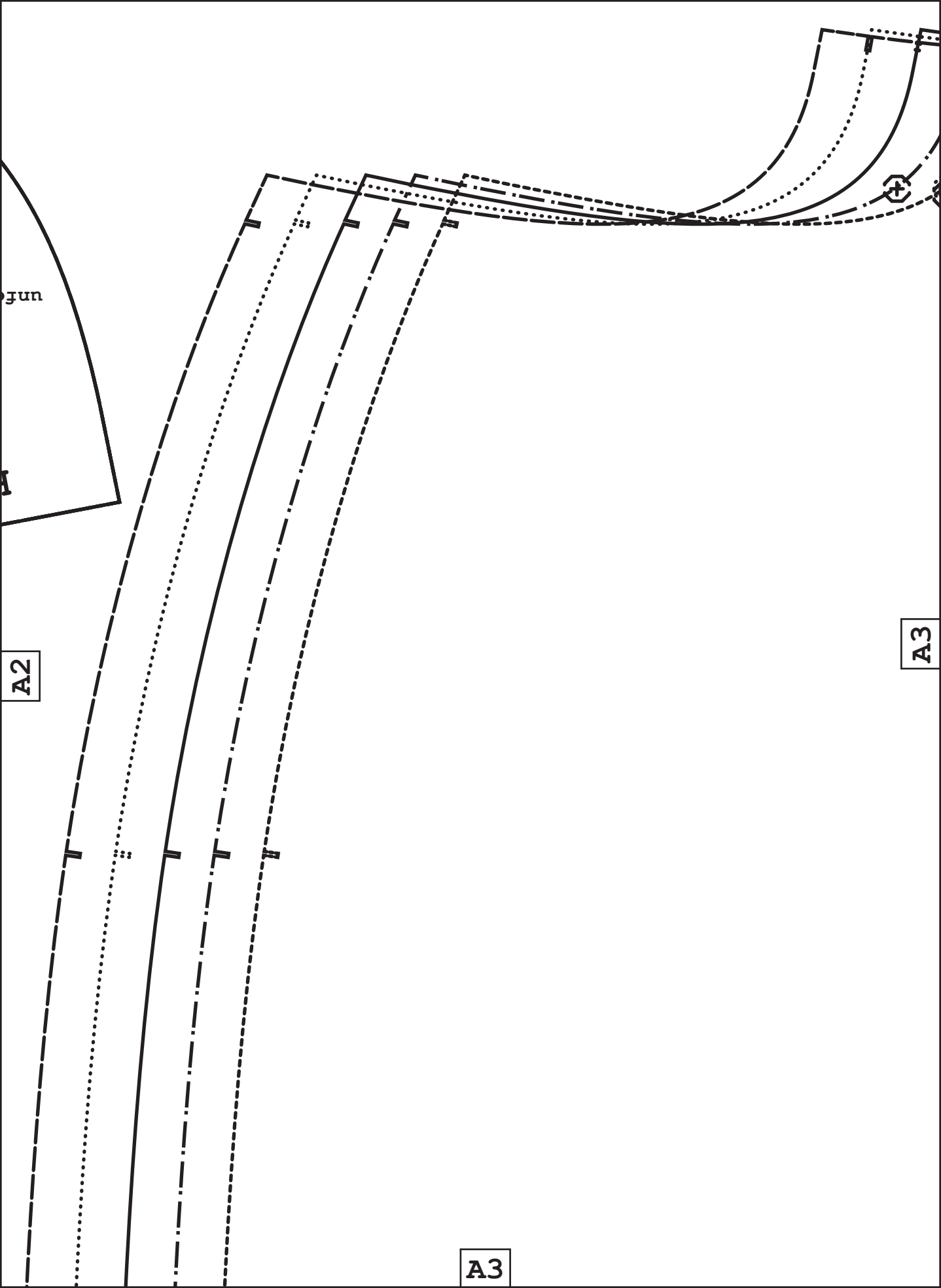
A2

A1

A2

Grainline





unf

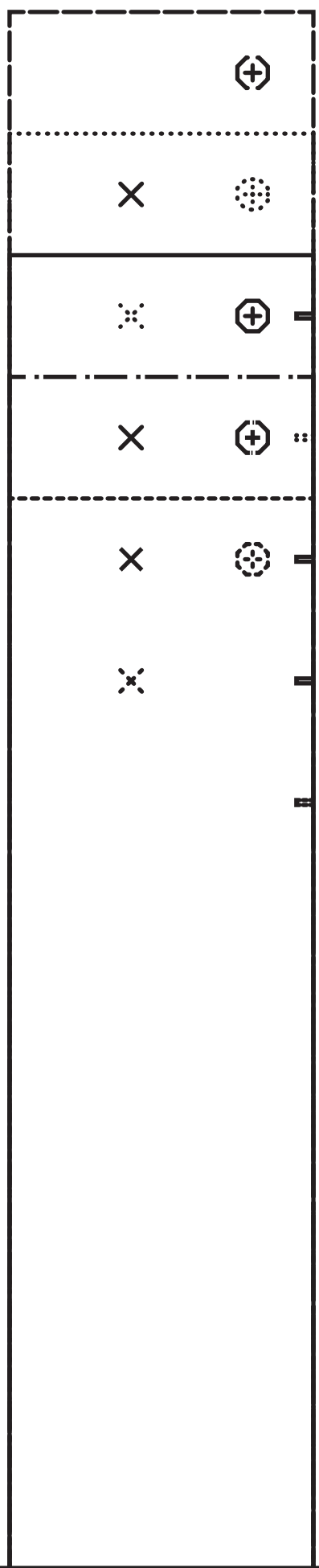
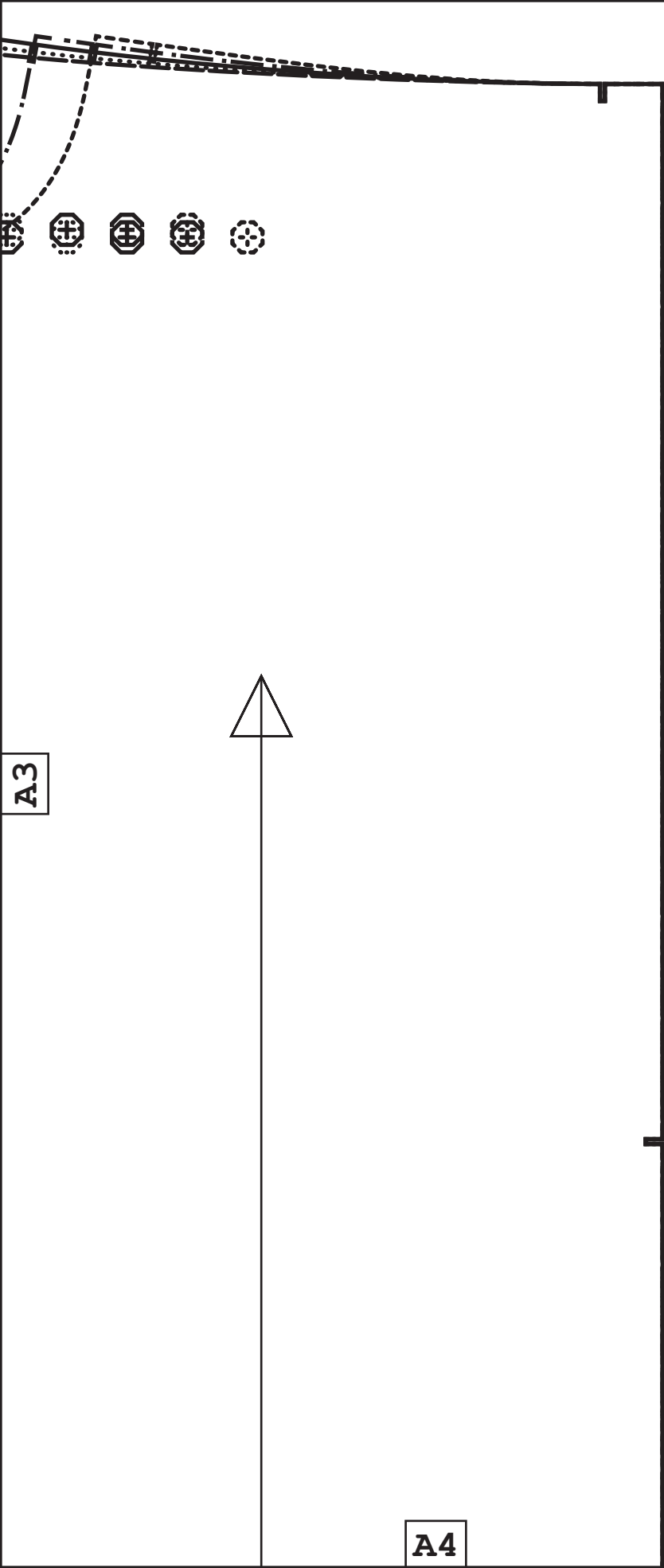
A

A2

A3

A3

+



A1



B1



B1

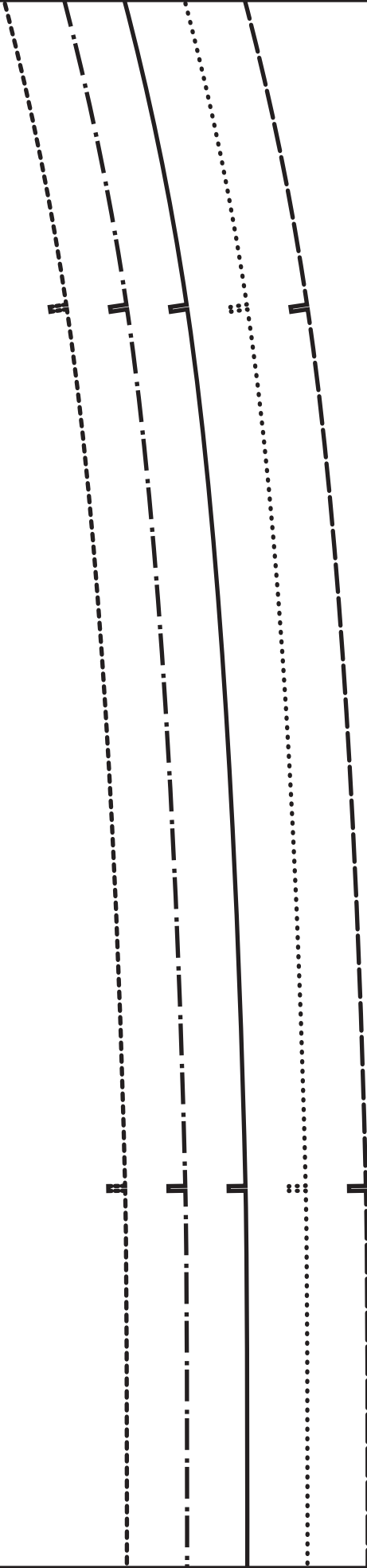


Fly facing

Cut 1x fabric (wrong side up)

Cut 1x interfacing

B2



A2

B2



B1

A3

B2

B3

unfettere

— unfettered patten

unfetteredpatterns.wordpress.

Model #UP1

Sizes

Fr

Cut 2x fab

B3

SIZE KEY

B3

ns |

com

033

S-L

ont

ric

A4

Center front

Grainline

B4



hand side on this line



on the fold of the fabric

Cut this edge

unfetteredpatterns.wordpress.com

Model #UP1033

Sizes S-L

Belt

Cut 1x fabric

Cut 1x interfacing



B1

unfettered
—unfettered patterns—

unfetteredpatterns.wordp

Model #UP1033

Sizes S-L

Back

Cut 2x fabric

Center back

Grainline

C1

SIZE

L
M/L
M
S/M
S

C1

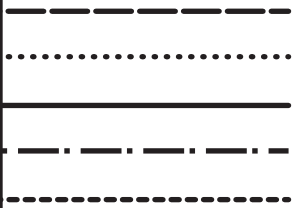
B2

ress.com

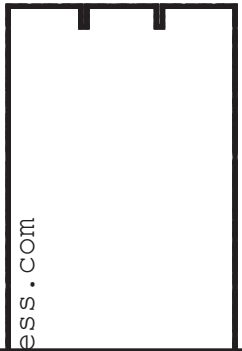
C1

C2

KEY



C2



ress.com

B3

L

M/L
.....
M

S/M

S

C2

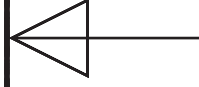
C3

C3

C3

B4

Cut the left-



C4

C1

D1

1

2

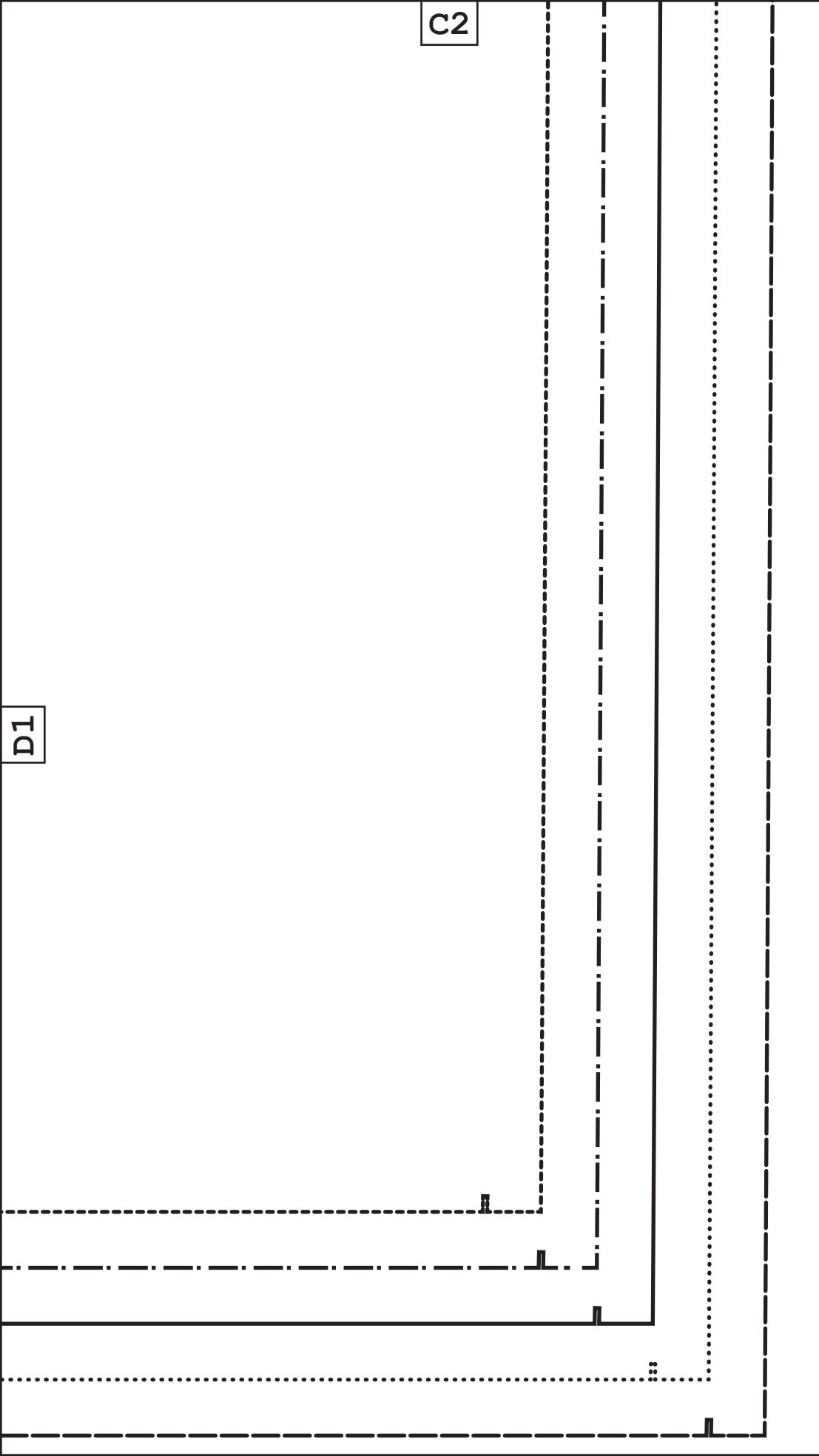
3

4

5

D1

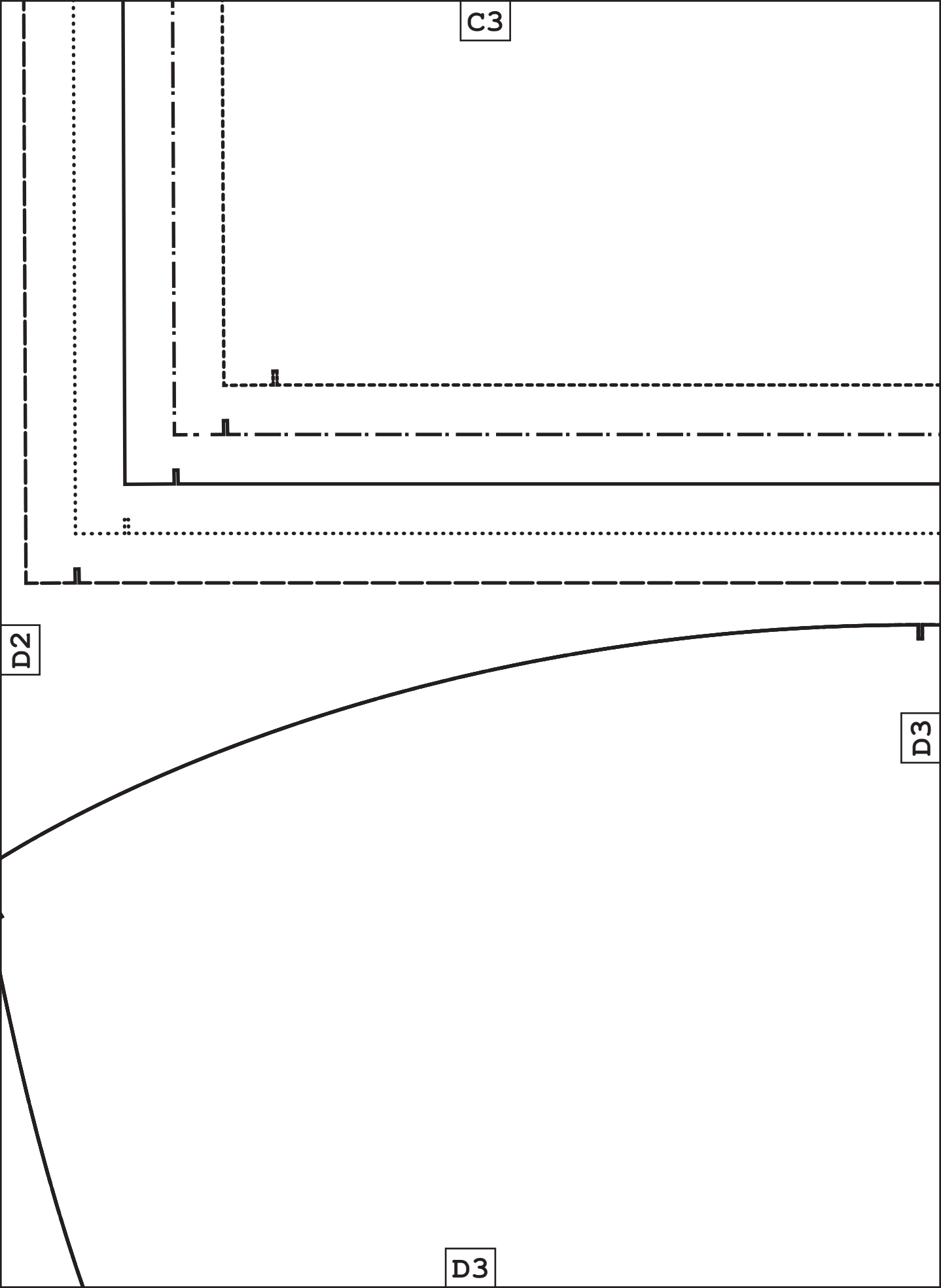
C2



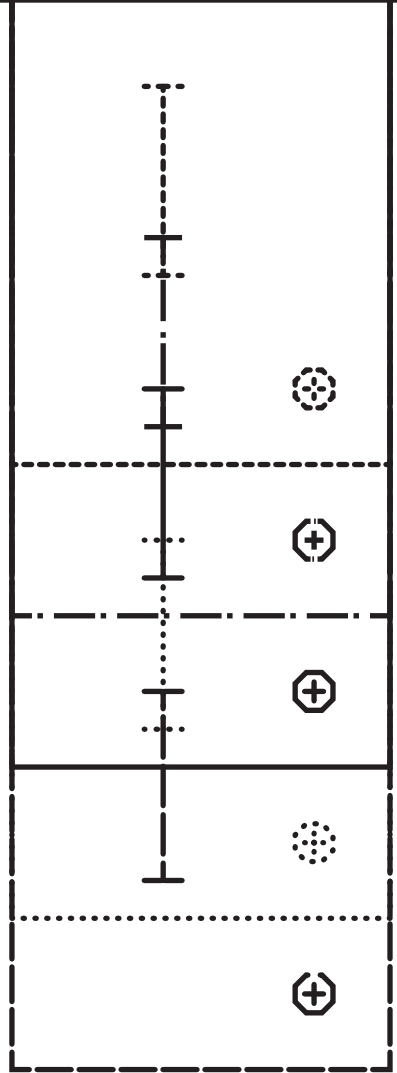
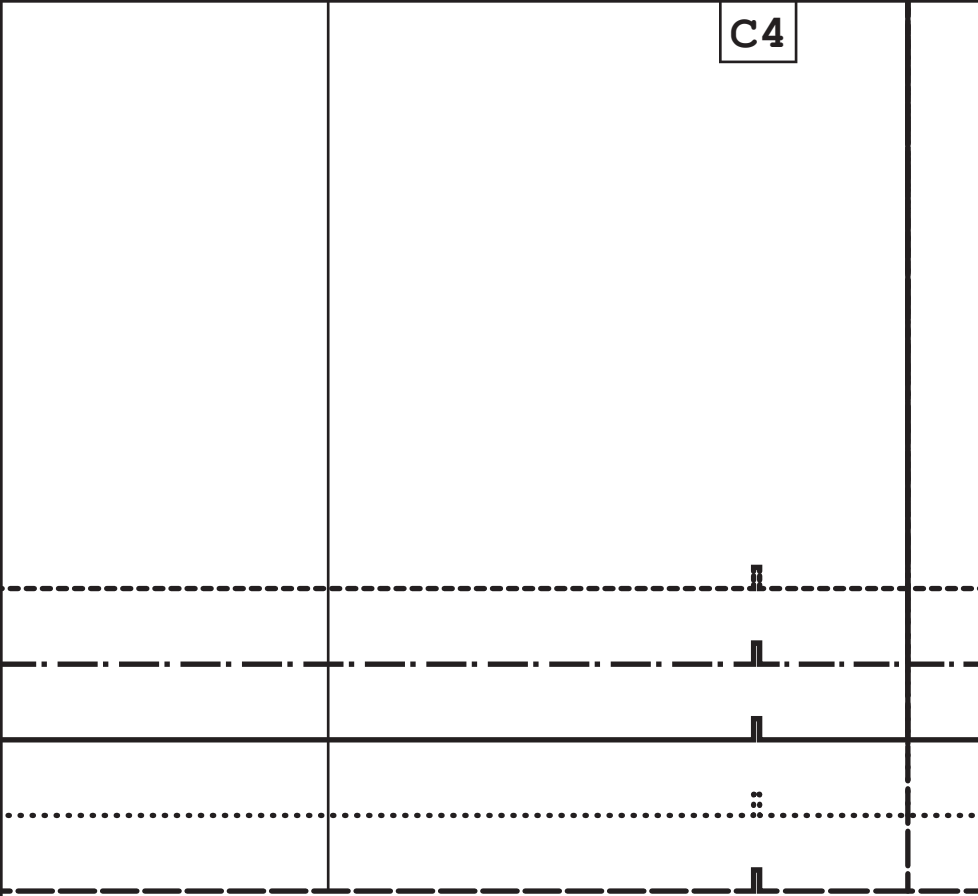
unfetteredpatterns .wordpr
 Model #UP1033
 Sizes S-L
Belt loop
 Cut 2x fabric



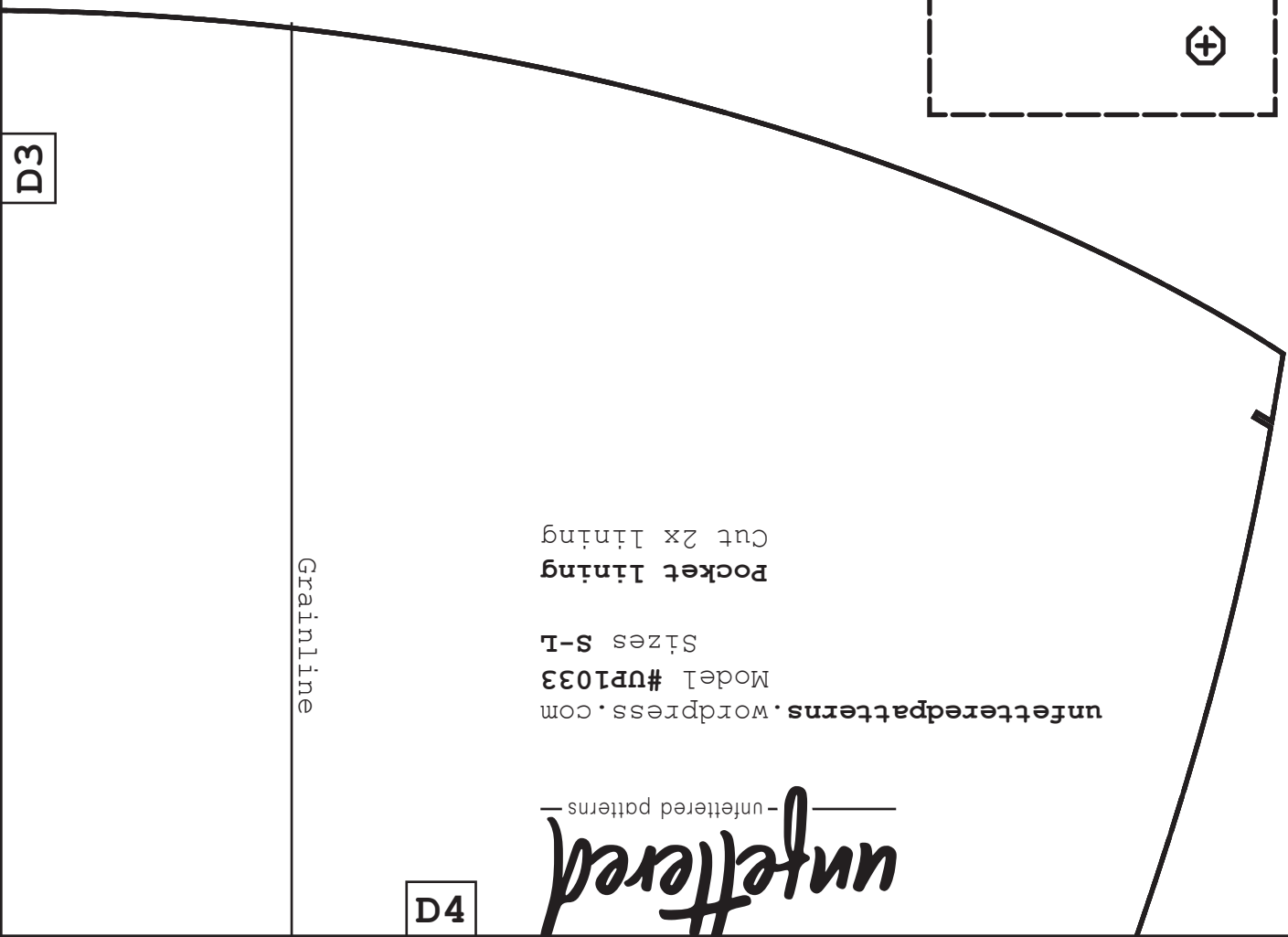
D2



C4



D3



unfetteredpatterns.wordpress.com
 Model #UP1033
 Sizes S-L
 Pocket Lining
 Cut 2x lining

unfettered
 unfettered patterns

D4

D3

E3

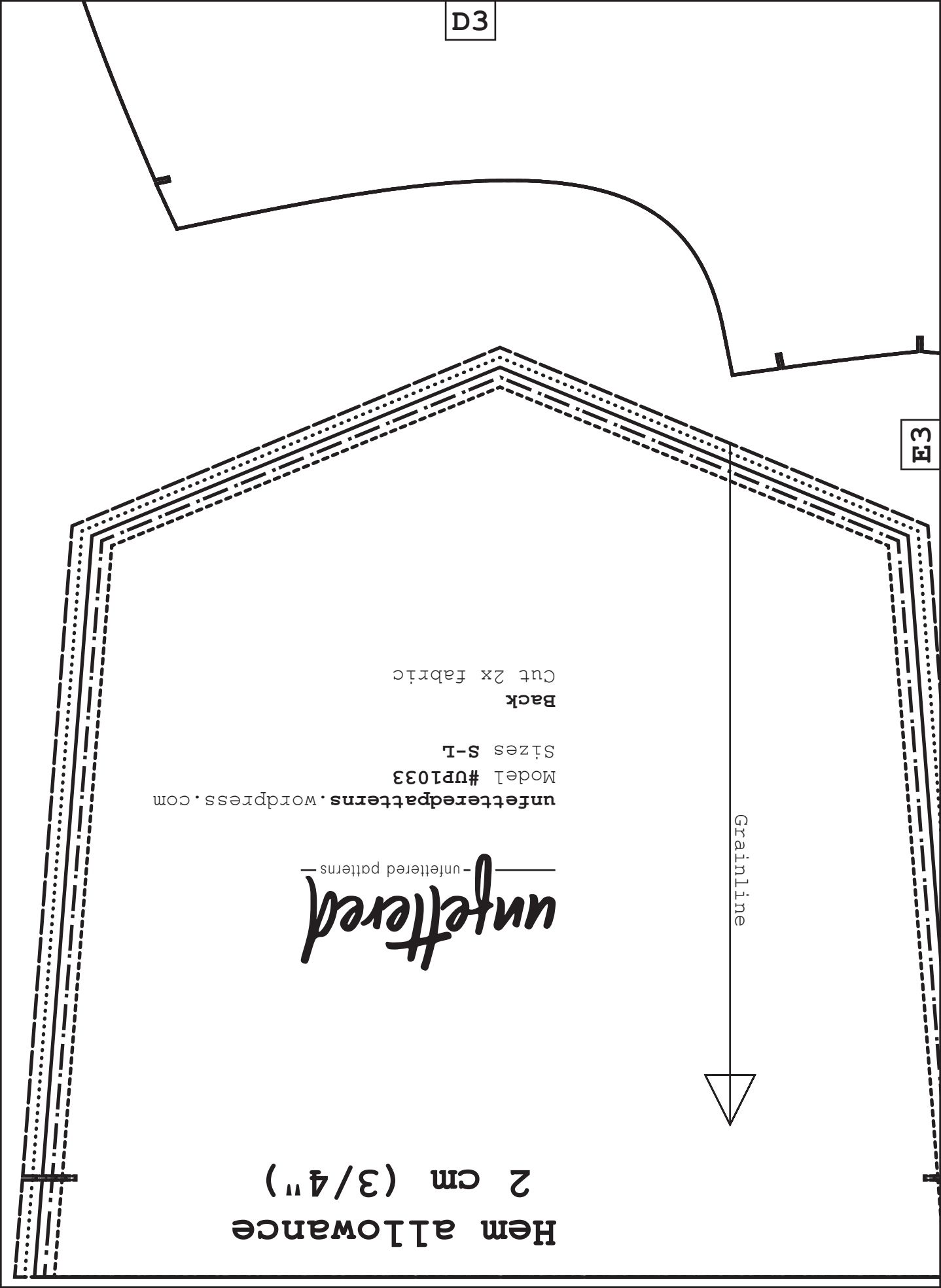
unfetteredpatterns.wordpress.com
Model #UP1033
Sizes S-L
Back
Cut 2x fabric

unfettered
—unfettered patterns—

Grainline



Hem allowance
2 cm (3/4")



D4



E3



Grainline

unfetteredpatterns.wordpress.com

Model #UP1033

Sizes S-L

Pocket backing

Cut 2x fabric

